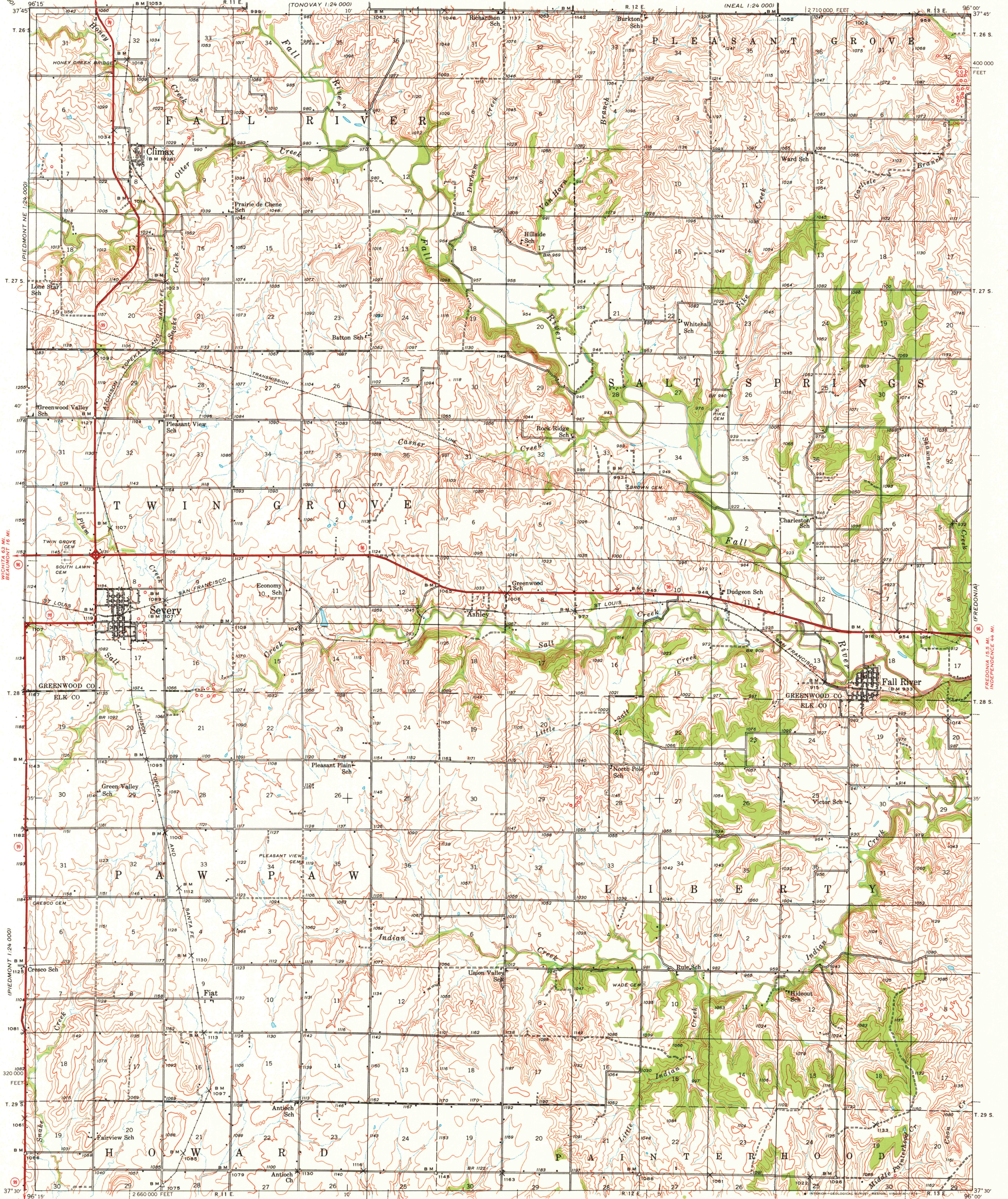


EMPORIA 53 MI.
JUNC. U.S. ROUTE 54 6 MI.
FEUREKA 1:24 000

STATE OF KANSAS
GEOLOGICAL SURVEY

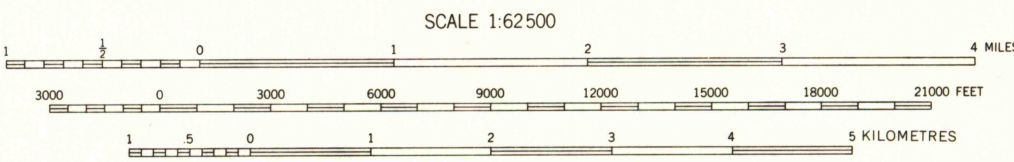
KANSAS
SEVERY QUADRANGLE
15-MINUTE SERIES

TORONTO 1:24 000



Topography by J. P. Rydeen
Surveyed in 1938-1939

10°
TRUE NORTH
MAGNETIC NORTH
APPROXIMATE MEAN
DECLINATION, 1939



ROUTES USUALLY TRAVELED
HARD IMPERVIOUS SURFACES
OTHER SURFACE IMPROVEMENTS
1940
① U.S. ROUTE ② STATE ROUTE
○ OIL WELLS

SEVERY, KANS.
N 3730-W 9600/15

1939

CONTOUR INTERVAL 20 FEET
NATIONAL GEODETIC VERTICAL DATUM OF 1929

FOR SALE BY U. S. GEOLOGICAL SURVEY, DENVER, COLORADO 80225, OR RESTON, VIRGINIA 22092
AND STATE GEOLOGICAL SURVEY, LAWRENCE, KANSAS 66044
A FOLDER DESCRIBING TOPOGRAPHIC MAPS AND SYMBOLS IS AVAILABLE ON REQUEST

USGS
Historical File
Topographic Division

JUN 9 7 1976