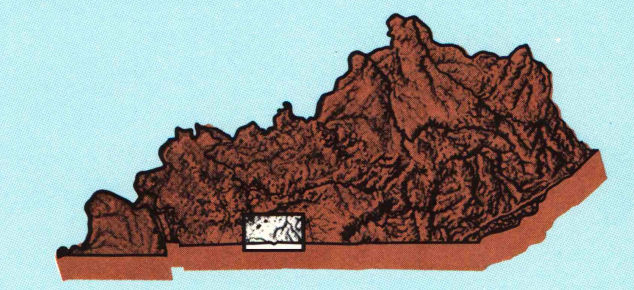


# Bowling Green

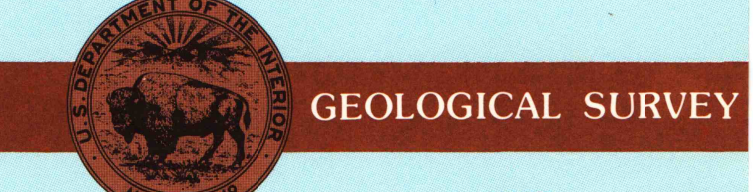
## KENTUCKY-TENNESSEE

1:100 000-scale  
planimetric map



30 X 60 MINUTE QUADRANGLE  
SHOWING

- Elevations in meters
- Highways, roads and other manmade structures
- Water features
- Woodland areas
- Geographic names



1985  
TENNESSEE VALLEY AUTHORITY

Produced by Tennessee Valley Authority in cooperation with the United States Geological Survey  
 Compiled from USGS 1:24 000-scale topographic maps dated 1951-1979. Planimetry revised from aerial photographs taken 1960 and other source data. Revised information not field checked. Map edited 1985.  
 Projection and 10 000-meter grid, zone 16; Universal Transverse Mercator  
 25 000-foot grid ticks based on Kentucky coordinate system, south zone, and Tennessee coordinate system  
 1927 North American Datum  
 To place on the predicted North American Datum 1983 move the projection lines 5 meters south and 1 meter west  
 There may be private inholdings within the boundaries of the National or State reservations shown on this map

NATIONAL GEODETIC VERTICAL DATUM OF 1929  
ELEVATIONS SHOWN TO THE NEAREST METER

THIS MAP COMPLIES WITH NATIONAL MAP ACCURACY STANDARDS

CONVERSION TABLE		DECLINATION DIAGRAM		ADJOINING MAPS		
Meters	Feet	MAG	GN	1	2	3
1	3.2808			4	5	
2	6.5617			6	7	8
3	9.8425					
4	13.1234					
5	16.4042					
6	19.6850					
7	22.9659					
8	26.2467					
9	29.5275					
10	32.8084					

To convert meters to feet multiply by 3.2808  
 To convert feet to meters multiply by 0.3048

UTM grid convergence (GN and MAG) magnetic declination (MAG) at center of map (Diagram is approximate)

1 Middleville  
 2 Campbellsville  
 3 Knoxville  
 4 Paducah  
 5 Nashville  
 6 Cookeville

FOR SALE BY U. S. GEOLOGICAL SURVEY  
 DENVER, COLORADO 80225, OR RESTON, VIRGINIA 22092  
 TENNESSEE DEPARTMENT OF CONSERVATION, DIVISION OF GEOLOGY,  
 NASHVILLE, TENN. 37243, AND  
 U. S. TENNESSEE VALLEY AUTHORITY, CHATTANOOGA, TENN. 37401  
 OR KNOXVILLE, TENN. 37902

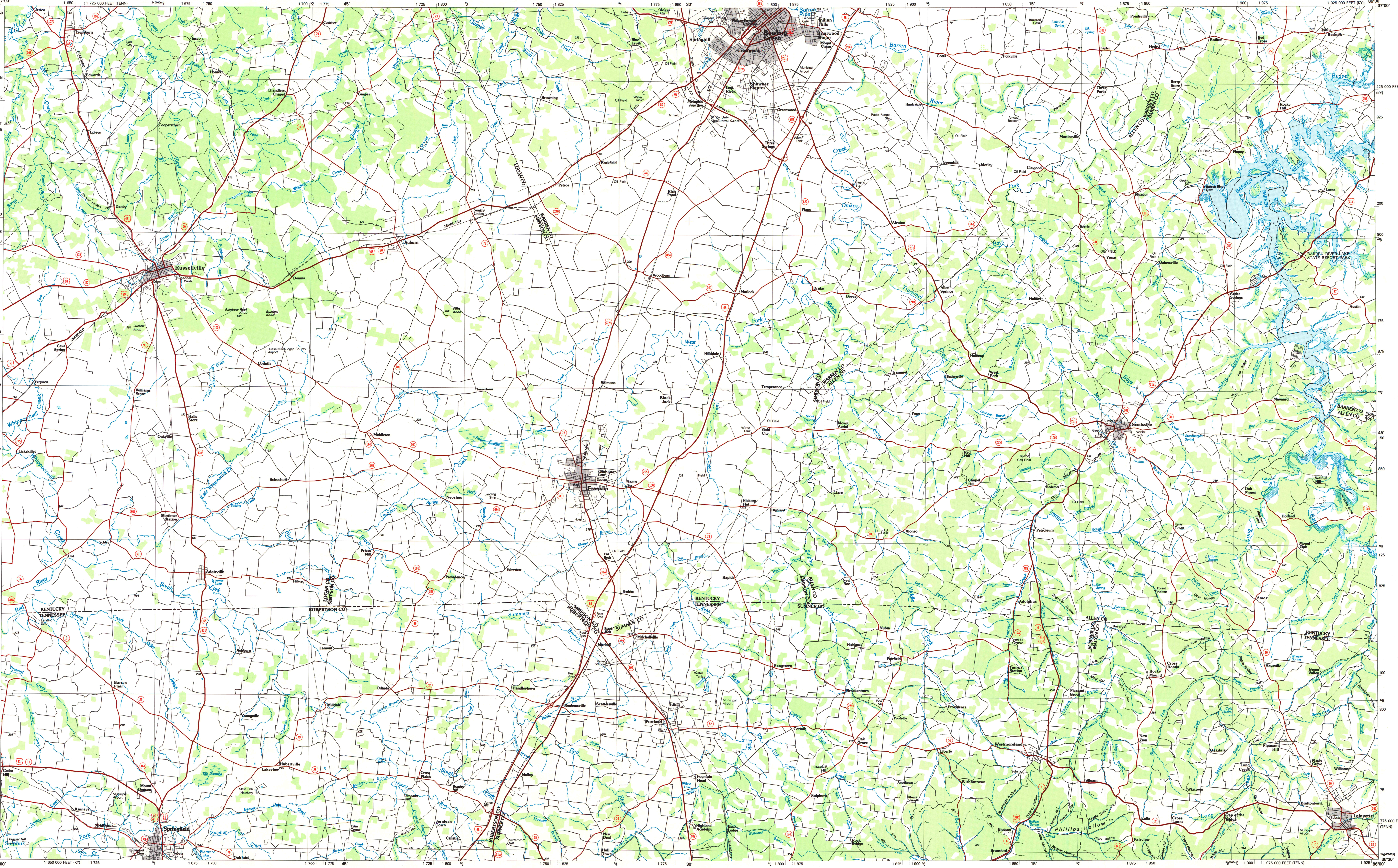
### Topographic Map Symbols

- Primary highway, hard surface
- Secondary highway, hard surface
- Light duty road, principal street, hard or improved surface
- Other road or street, well
- Route marker: Interstate, U. S. State
- Railroad: standard gage; narrow gage
- Bridge: overpass; underpass
- Tunnel: rock; railroad
- Built-up area: locality: elevation
- Airport: landing field; landing strip
- National boundary
- State boundary
- County boundary
- National or State reservation boundary
- Land grant boundary
- U. S. public lands survey: range, township, section
- Range, township, section line: protected
- Power transmission line: pipeline
- Dam: dam with lock
- Cemetery: building
- Windmill; water well; spring
- Mine shaft; edit or cave; mine, quarry; gravel pit
- Campground; picnic area; U. S. location monument
- Railroad: oil well
- Distorted surface: strip mine, lava, sand
- Contours: index; intermediate; supplementary
- Bathymetric contours: index; intermediate
- Stream, lake: perennial; intermittent
- Rapids, large and small; falls, large and small
- Area to be submerged; marsh, swamps
- Land subject to controlled inundation; woodland
- Scrub; mangrove
- Orchard; vineyard

A pamphlet describing topographic maps is available on request  
 U. S. Regional  
 Depository Copy  
 DO NOT DISCARD  
 DEC 5 - 1988  
 A. H. ROBINSON  
 MAP LIBRARY  
 University of Wisconsin  
 Madison

### BOWLING GREEN, KENTUCKY-TENNESSEE

30 X 60 MINUTE SERIES (PLANIMETRIC)



SCALE 1:100 000  
 1 CENTIMETER ON THE MAP REPRESENTS 1 KILOMETER ON THE GROUND

0 1 2 3 4 5 6 7 8 9 10 11 12 13 14 15 16 17 18 19 20 KILOMETERS  
 0 1 2 3 4 5 6 7 8 9 10 11 12 13 14 15 16 17 18 19 20 MILES

BOWLING GREEN, KENTUCKY-TENNESSEE  
 36086-E1-PL-100

1985