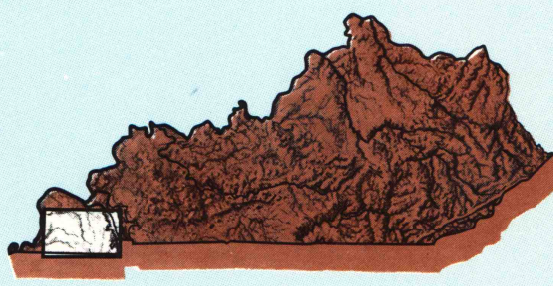


# MURRAY

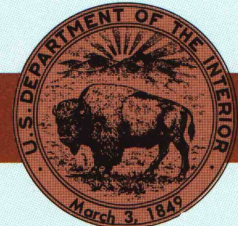
## KENTUCKY-TENNESSEE

1:100 000-scale  
planimetric map



30 X 60 MINUTE QUADRANGLE  
SHOWING

- Elevations in meters
- Highways, roads and other manmade structures
- Water features
- Woodland areas
- Geographic names



GEOLOGICAL SURVEY

1986  
TENNESSEE VALLEY AUTHORITY

Produced by Tennessee Valley Authority  
in cooperation with the United States Geological Survey  
Compiled from USGS-TVA 1:24 000-scale topographic maps  
dated 1952-1986. Planimetry revised from aerial photographs  
taken 1980-1981 and other source data. Revised information  
not field checked. Map edited 1986.  
Projection and 10 000-meter grid, zone 16: Universal  
Transverse Mercator  
25 000-foot grid ticks based on Kentucky coordinate system,  
south zone, and Tennessee coordinate system  
1927 North American Datum  
To place on the predicted North American Datum 1983  
move the projection lines 5 meters south and 4 meters east  
There may be private inholdings within the boundaries of  
the National or State reservations shown on this map

NATIONAL GEODETIC VERTICAL DATUM OF 1929  
ELEVATIONS SHOWN TO THE NEAREST METER

THIS MAP COMPLES WITH NATIONAL MAP ACCURACY STANDARDS

CONVERSION TABLE		DECLINATION DIAGRAM	ADJOINING MAPS			
Meters	Feet		1	2	3	
1	3.2808		1	2	3	
2	6.5617		4	5		
3	9.8425		6	7	8	
4	13.1234					
5	16.4042					
6	19.6850					
7	22.9659					
8	26.2467					
9	29.5275					
10	32.8084					
To convert meters to feet multiply by 3.2808		UTM grid convergence (GN) and 1983 magnetic declination (MN) at center of map. Diagram is approximate.				
To convert feet to meters multiply by 0.3048						

FOR SALE BY U.S. GEOLOGICAL SURVEY  
DENVER, COLORADO 80225, OR RESTON, VIRGINIA 22092  
TENNESSEE DEPARTMENT OF CONSERVATION, DIVISION OF GEOLOGY,  
NASHVILLE, TENN. 37219, AND  
U.S. TENNESSEE VALLEY AUTHORITY, CHATTANOOGA, TENN. 37401  
OR KNOXVILLE, TENN. 37902

### Topographic Map Symbols

Primary highway, hard surface	
Secondary highway, hard surface	
Light duty road, principal street, hard or improved surface	
Other road or street, trail	
Route marker: Interstate, U. S. State	
Railroad: standard gage; narrow gage	
Bridge: overpass; underpass	
Tunnel: road; railroad	
Built up area; locality; elevation	
Airport; landing field; landing strip	
National boundary	
State boundary	
County boundary	
National or State reservation boundary	
Land grant boundary	
U. S. public lands survey: range, township; section	
Range, township; section line: projected	
Power transmission line; pipeline	
Dam; dam with lock	
Cemetery; building	
Windmill; water well; spring	
Mine shaft; adit or cave; mine, quarry; gravel pit	
Campground; picnic area; U. S. location monument	
Railroad: strip mine, levee, sand	
Contours: index; intermediate; supplementary	
Bathymetric contours: index; intermediate	
Stream, lake; perennial; intermittent	
Rapids, large and small; falls, large and small	
Area to be submerged; marsh, swamp	
Land subject to controlled inundation; woodland	
Scrub; mangrove	
Orchard; vineyard	

A pamphlet describing topographic maps is available on request

MAR 18 1987

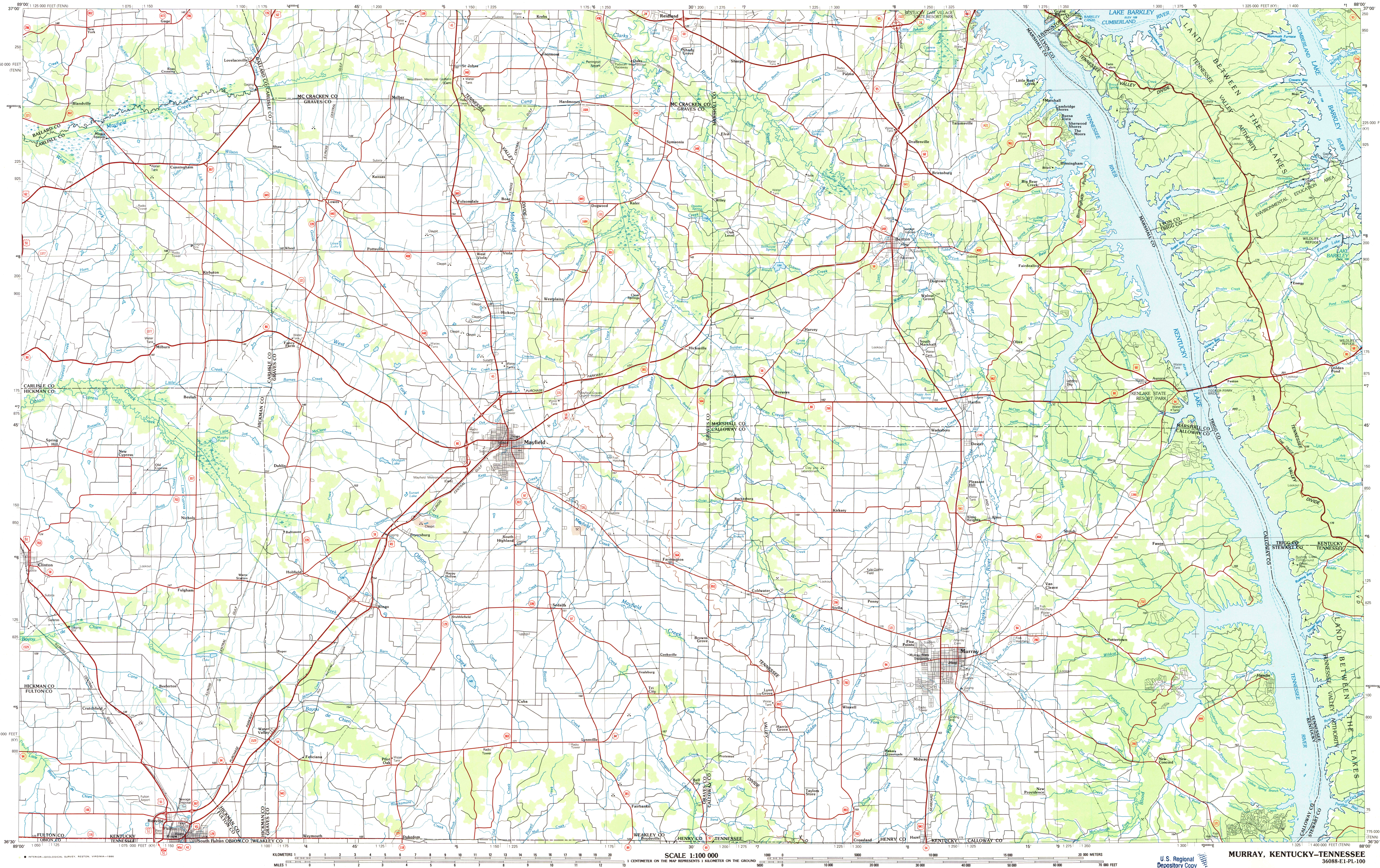
ARTHUR H. ROBINSON MAP LIBRARY  
University of Wisconsin-Madison

SET

Book-91x

## MURRAY, KENTUCKY-TENNESSEE

30 X 60 MINUTE SERIES (PLANIMETRIC)



U. S. Regional  
Depository Copy  
DO NOT DISCARD

MURRAY, KENTUCKY-TENNESSEE

36088-E1-PL-100

1986