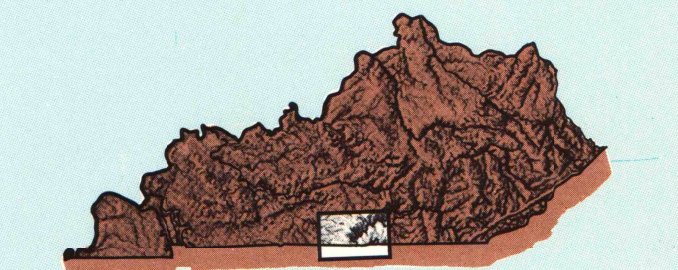


Tompkinsville

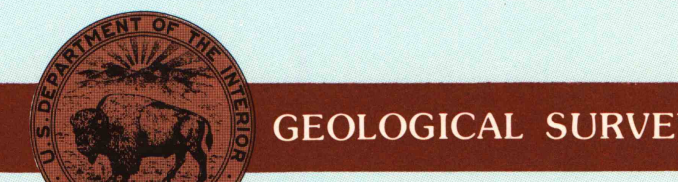
KENTUCKY-TENNESSEE

1:100 000-scale
planimetric map



30 X 60 MINUTE QUADRANGLE
SHOWING

- Elevations in meters
- Highways, roads and other manmade structures
- Water features
- Woodland areas
- Geographic names



1985
TENNESSEE VALLEY AUTHORITY

Produced by Tennessee Valley Authority
in cooperation with the United States Geological Survey

Compiled from USGS 1:24 000-scale topographic maps dated 1953-1983. Planimetry revised from aerial photographs taken 1975-1981 and other source data. Revised information not field checked. Map edited 1985

Projection and 10 000-meter grid, zone 16: Universal Transverse Mercator
25 000-foot grid ticks based on Kentucky coordinate system, south zone, and Tennessee coordinate system
1927 North American Datum
To place on the predicted North American Datum 1983 move the projection lines 5 meters south and 3 meters west

There may be private inholdings within the boundaries of the National or State reservations shown on this map

NATIONAL GEODETIC VERTICAL DATUM OF 1929
ELEVATIONS SHOWN TO THE NEAREST METER

THIS MAP COMPLIES WITH NATIONAL MAP ACCURACY STANDARDS

CONVERSION TABLE		DECLINATION DIAGRAM	ADJOINING MAPS			
Meters	Feet		1	2	3	
1	3.2808		4	5	6	
2	6.5616					
3	9.8424					
4	13.1232					
5	16.4040					
6	19.6848					
7	22.9656					
8	26.2464					
9	29.5272					
10	32.8080					

UTM grid convergence (GSA and 1983 magnetic declination 1983) at center of map
Diagram is approximate

1 Beaver Dam
2 Brownsville
3 Buckhorn
4 Canton
5 Clinton
6 Cumberland
7 Dale Hollow Lake
8 Hickory Ridge

FOR SALE BY U.S. GEOLOGICAL SURVEY, RESTON, VIRGINIA 22092
TENNESSEE DEPARTMENT OF CONSERVATION, DIVISION OF GEOLOGY
NASHVILLE, TENN. 37219 AND
U.S. TENNESSEE VALLEY AUTHORITY, CHATTANOOGA, TENN. 37401
OR KNOXVILLE, TENN. 37902

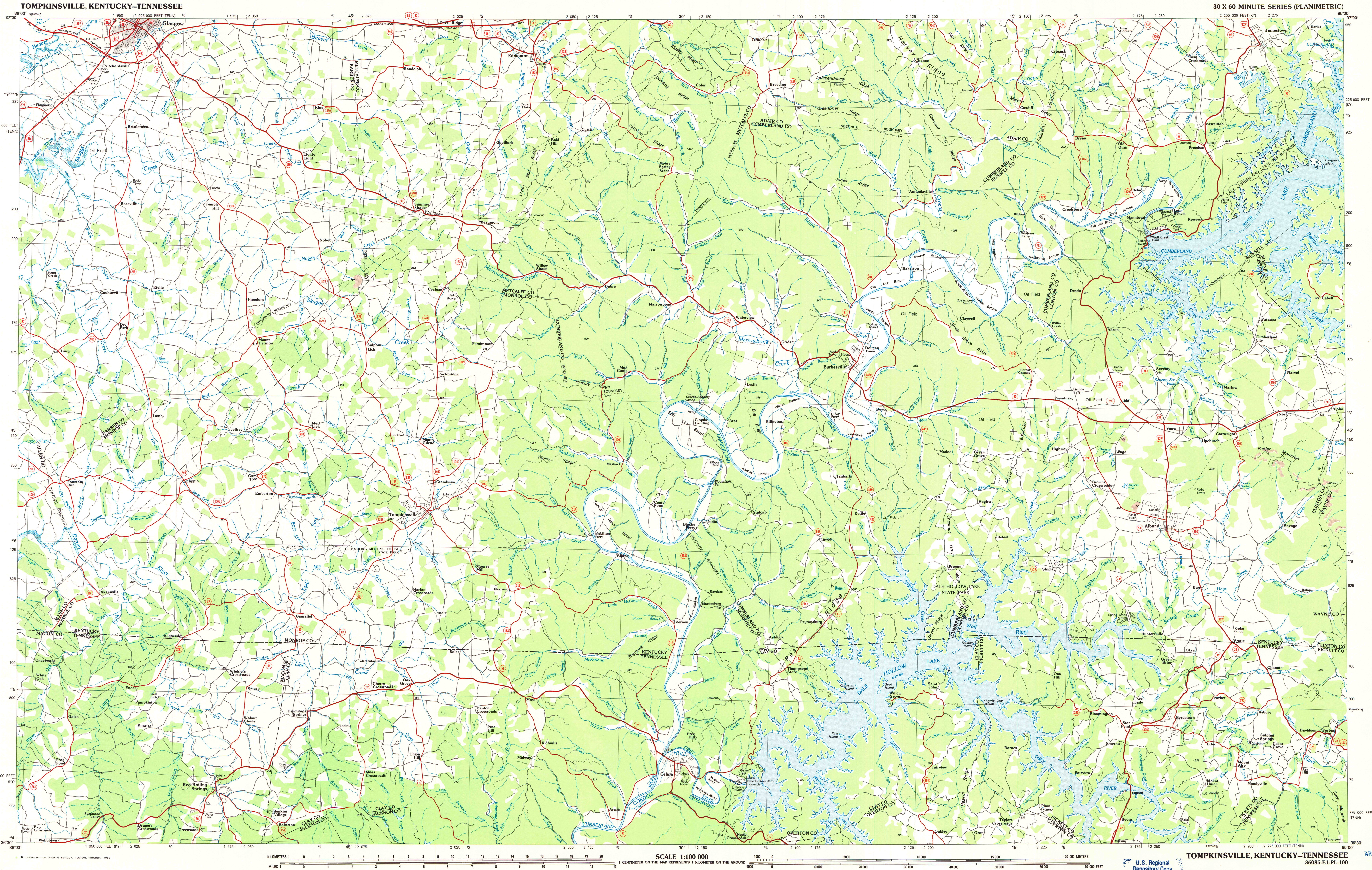
Topographic Map Symbols

- Primary highway, hard surface
- Secondary highway, hard surface
- Light duty road, principal street, hard or improved surface
- Other road or street, rail
- Route marker: Interstate, U. S., State
- Railroad: standard gage, narrow gage
- Bridge: overpass, underpass
- Tunnel: road, railroad
- Built up area, locality, elevation
- Airport: landing field, landing strip
- National boundary
- State boundary
- County boundary
- National or State reservation boundary
- Land grant boundary
- U. S. public lands survey: range, township, section
- Range, township, section line: protected
- Power transmission line; pipeline
- Dam; dam with lock
- Cemetery: building
- Windmill; water well; spring
- Mine shaft; adit or cave; mine, quarry; gravel pit
- Campground; picnic area; U. S. location monument
- Ruins, old dwelling
- Distorted surface: strip mine, lava, sand
- Contours: index, intermediate, supplementary
- Bathymetric contours: index, intermediate
- Stream, lake, perennial, intermittent
- Rapids, weir and small falls, large and small
- Area to be submerged: marsh, swamp
- Land subject to controlled inundation; woodland
- Scrub; mangrove
- Orchard; vineyard

A pamphlet describing topographic maps is available on request

MAR 15 1987
ARTHUR H. ROBINSON MAP LIBRARY
University of Wisconsin-Madison

SET Ecoc-9/8



U.S. Regional
Depository Copy
DO NOT DISCARD

TOMPKINSVILLE, KENTUCKY-TENNESSEE
36085-E1-PL-100
1985

SCALE 1:100 000
1 CENTIMETER ON THE MAP REPRESENTS 1 KILOMETER ON THE GROUND

1 KILOMETER
1 MILE