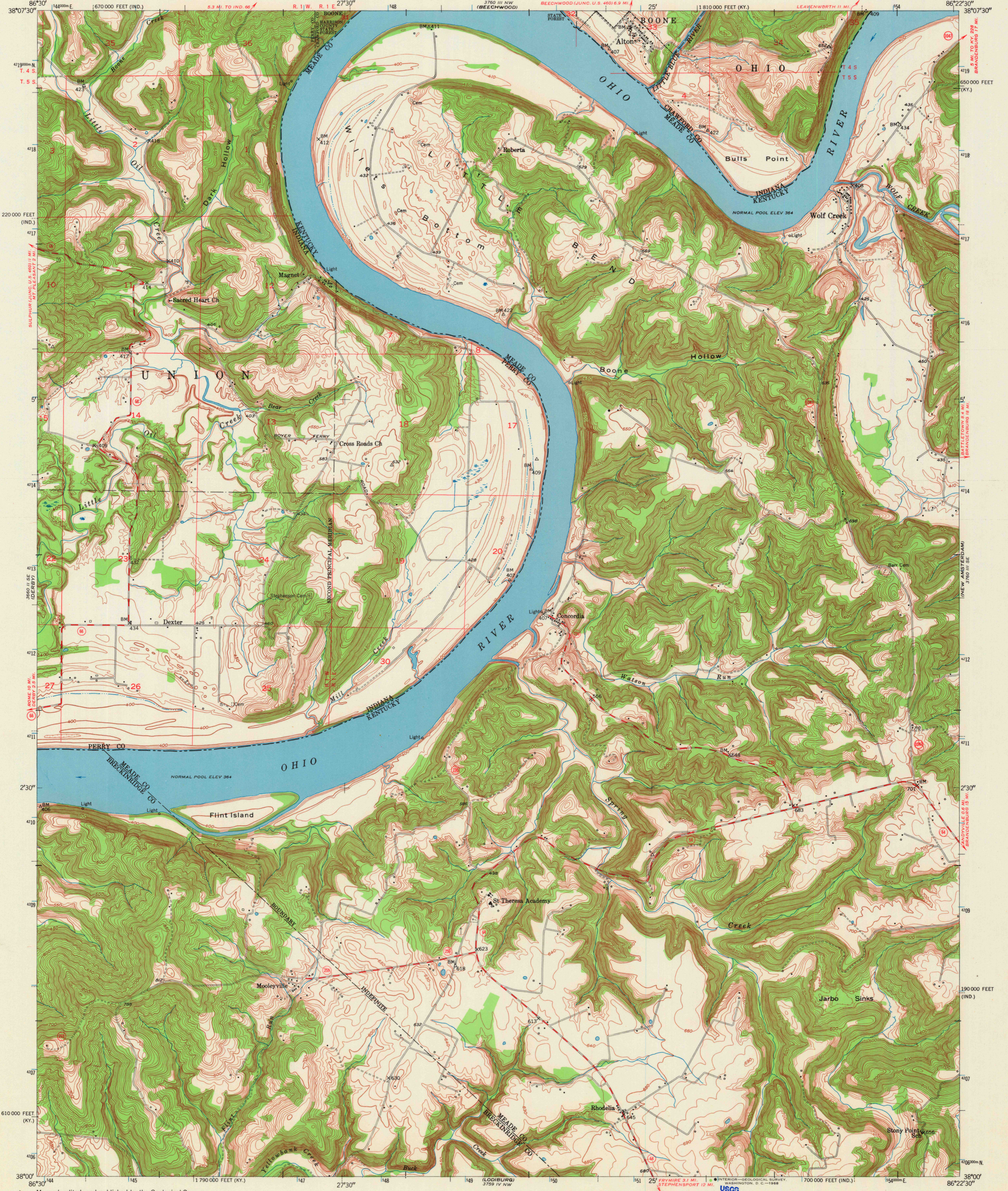
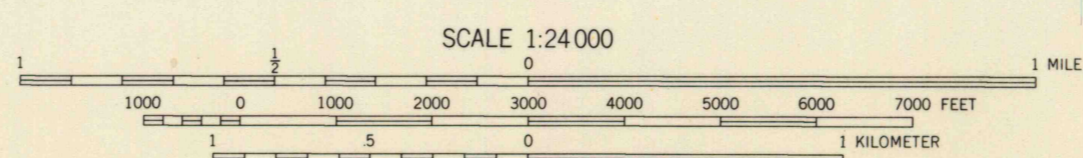
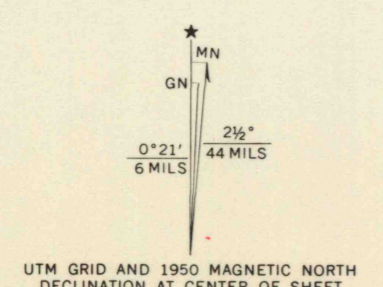


UNITED STATES  
DEPARTMENT OF THE INTERIOR  
GEOLOGICAL SURVEY

ALTON QUADRANGLE  
KENTUCKY-INDIANA  
7.5 MINUTE SERIES (TOPOGRAPHIC)  
SW/4 PECKENPAUGH 15' QUADRANGLE



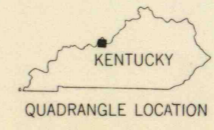
Mapped, edited, and published by the Geological Survey  
Control by USGS, and USC&GS, and USCE  
Topography from aerial photographs by stereoplano-graph  
Aerial photographs taken 1947 and 1948. Field check 1950  
Polyconic projection. 1927 North American datum  
10,000-foot grids based on Kentucky coordinate system,  
south zone, and Indiana coordinate system, west zone  
1000-meter Universal Transverse Mercator grid ticks,  
zone 16, shown in blue



CONTOUR INTERVAL 10 FEET  
DATUM IS MEAN SEA LEVEL

THIS MAP COMPLIES WITH NATIONAL MAP ACCURACY STANDARDS  
FOR SALE BY U. S. GEOLOGICAL SURVEY, WASHINGTON, D. C. 20242  
INDIANA DEPARTMENT OF NATURAL RESOURCES, INDIANAPOLIS, INDIANA 46204  
KENTUCKY GEOLOGICAL SURVEY, LEXINGTON, KENTUCKY 40506,  
AND KENTUCKY DEPARTMENT OF COMMERCE, FRANKFORT, KENTUCKY 40601  
A FOLDER DESCRIBING TOPOGRAPHIC MAPS AND SYMBOLS IS AVAILABLE ON REQUEST

USGS  
Historical File  
Topographic Division



U.S.G.S.  
FINE COPY  
TOPOGRAPHIC DIVISION

ROAD CLASSIFICATION  
Medium-duty — Light-duty  
Unimproved dirt — State Route

ALTON, KY.—IND.  
SW/4 PECKENPAUGH 15' QUADRANGLE  
N3800—W8622.5/7.5

1950  
AMS 3760 III SW—SERIES V853

MAR 18 1969  
2810

R