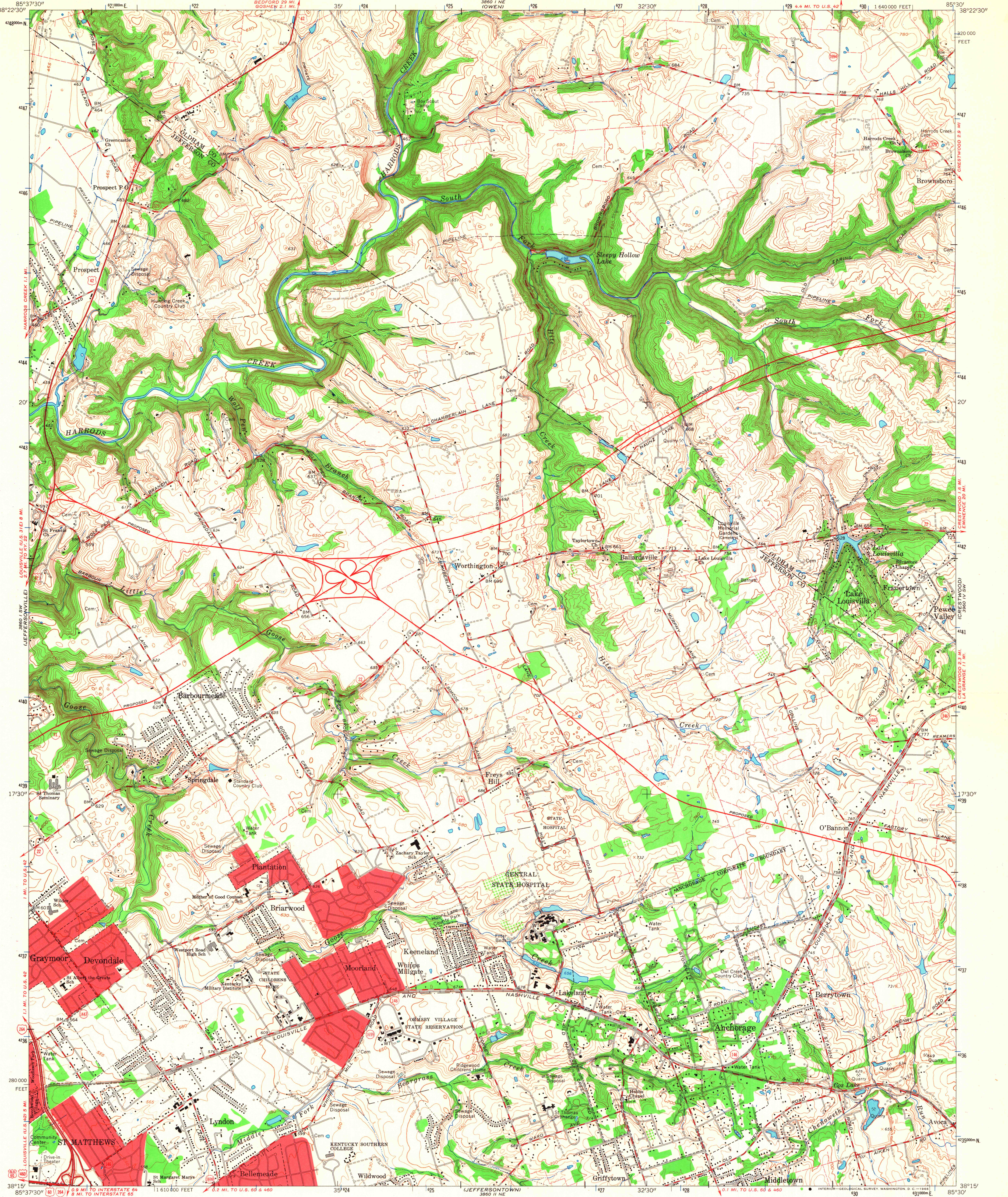


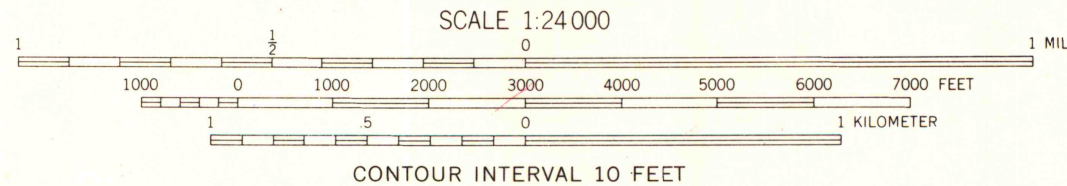
UNITED STATES
DEPARTMENT OF THE INTERIOR
GEOLOGICAL SURVEY

STATE OF KENTUCKY
KENTUCKY GEOLOGICAL SURVEY
UNIVERSITY OF KENTUCKY

ANCHORAGE QUADRANGLE
KENTUCKY
7.5 MINUTE SERIES (TOPOGRAPHIC)
SE 1/4 PROSPECT 15' QUADRANGLE



Mapped, edited, and published by the Geological Survey
Control by USGS and USC&GS
Topography by photogrammetric methods from aerial photographs
taken 1949. Field checked 1950. Revised 1965
Polyconic projection. 1927 North American datum
10,000-foot grid based on Kentucky coordinate system, north zone
1000-meter Universal Transverse Mercator grid ticks, zone 16,
shown in blue
Fine red dashed lines indicate selected fence and field lines where
generally visible on aerial photographs. This information is unchecked
Red tint indicates areas in which only landmark buildings are shown



THIS MAP COMPLIES WITH NATIONAL MAP ACCURACY STANDARDS
FOR SALE BY U.S. GEOLOGICAL SURVEY, WASHINGTON, D. C. 20242,
KENTUCKY GEOLOGICAL SURVEY, LEXINGTON, KENTUCKY,
AND KENTUCKY DEPARTMENT OF COMMERCE, FRANKFORT, KENTUCKY
A FOLDER DESCRIBING TOPOGRAPHIC MAPS AND SYMBOLS IS AVAILABLE ON REQUEST

MAP AND AIR PHOTO LIBRARY
University of Wisconsin

ROAD CLASSIFICATION
Heavy-duty ——— Light-duty ———
Medium-duty ——— Unimproved dirt ———
Interstate Route — U.S. Route — State Route

ANCHORAGE, KY.
SE 1/4 PROSPECT 15' QUADRANGLE
N3815—W8530/7.5

1965

AMS 3860 1 SE—SERIES V853