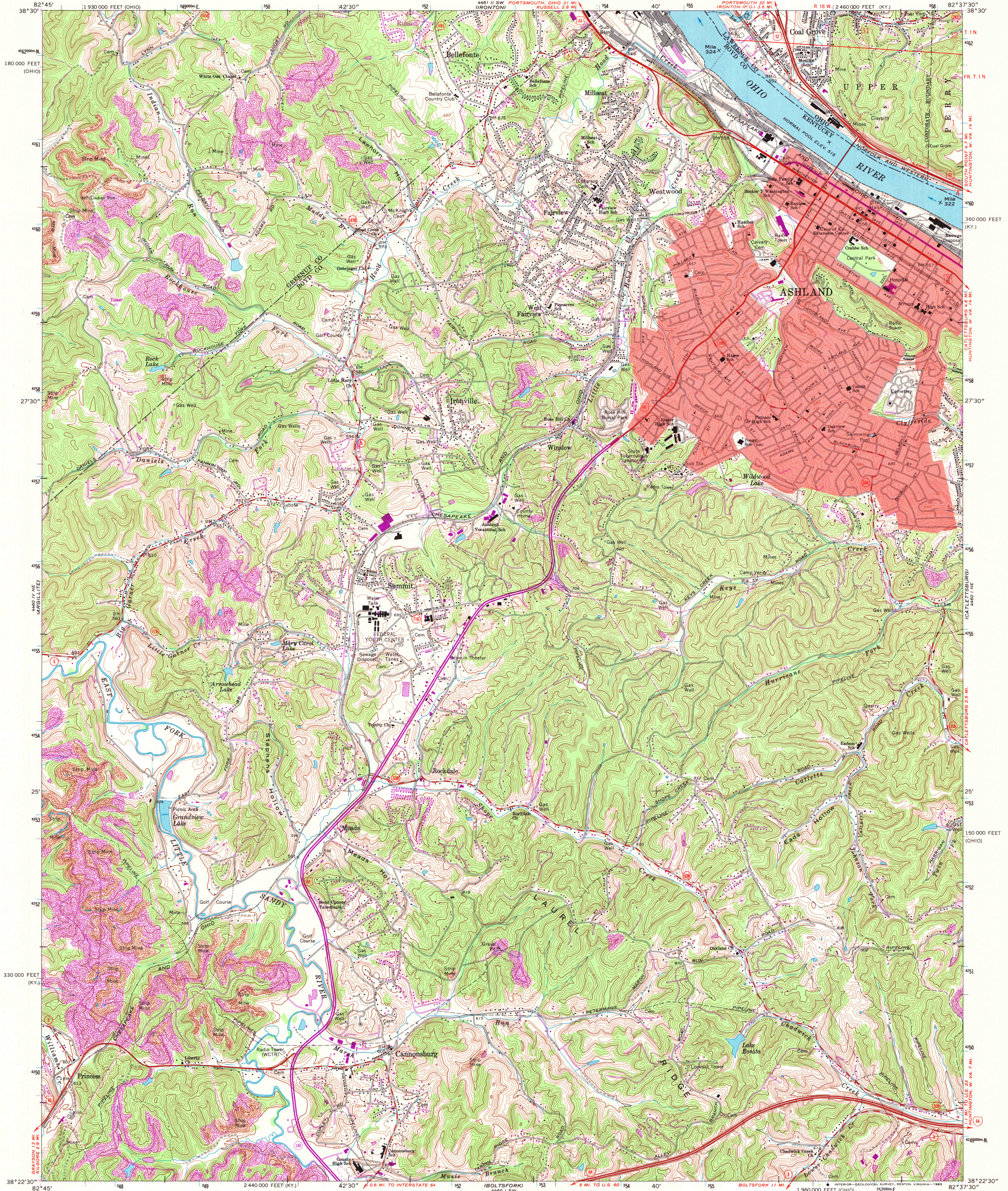
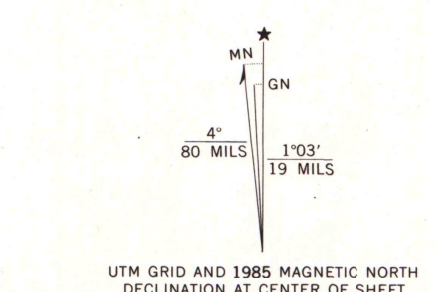


UNITED STATES  
DEPARTMENT OF THE INTERIOR  
GEOLOGICAL SURVEY

ASHLAND QUADRANGLE  
KENTUCKY—OHIO  
7.5 MINUTE SERIES (TOPOGRAPHIC)

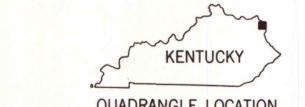


Mapped, edited, and published by the Geological Survey in cooperation with State of Kentucky agencies. Revised in cooperation with State of Ohio agencies. Control by USGS, USC&GS, USCE, and Tennessee Valley Authority. Topography by photogrammetric methods from aerial photographs taken 1952. Field checked 1953. Revised from aerial photographs taken 1967. Field checked 1968. Polyconic projection. 1927 North American datum. 10,000-foot grids based on Kentucky coordinate system, north zone, and Ohio coordinate system, south zone. 1000-meter Universal Transverse Mercator grid ticks, zone 17, shown in blue. The state boundary as shown represents the approximate position of the low water line as determined from U. S. Corps of Engineers Ohio River charts, surveyed 1914, and supplementary information. Red tint indicates area in which only landmark buildings are shown. Ohio area lies within Congress Lands East of the Scioto River. Land lines based on the Ohio River Base.



SCALE 1:24,000  
CONTOUR INTERVAL 20 FEET  
DOTTED LINES REPRESENT 10-FOOT CONTOURS  
NATIONAL GEODETIC VERTICAL DATUM OF 1929

THIS MAP COMPLIES WITH NATIONAL MAP ACCURACY STANDARDS FOR SALE BY U. S. GEOLOGICAL SURVEY, RESTON, VIRGINIA 22092. KENTUCKY GEOLOGICAL SURVEY, LEXINGTON, KENTUCKY 40596, AND KENTUCKY DEPARTMENT OF COMMERCE, FRANKFORT, KENTUCKY 40601. A FOLDER DESCRIBING TOPOGRAPHIC MAPS AND SYMBOLS IS AVAILABLE ON REQUEST.



ROAD CLASSIFICATION  
Primary highway, all weather, hard surface  
Secondary highway, all weather, hard surface  
Light-duty road, all weather, improved surface  
Unimproved road, fair or dry weather  
Interstate Route  
U. S. Route  
State Route

ASHLAND, KY.—OHIO  
38082-D6-TF-024  
1968  
PHOTOREVISED 1985  
DMA 4460 1 NW—SERIES 8853

U.S. Regional  
Depository Copy  
DO NOT DISCARD

AM ROBINSON  
MAP LIBRARY  
DEC 20 1985  
University of Wisconsin  
Madison