

84°00'
37°07'30"

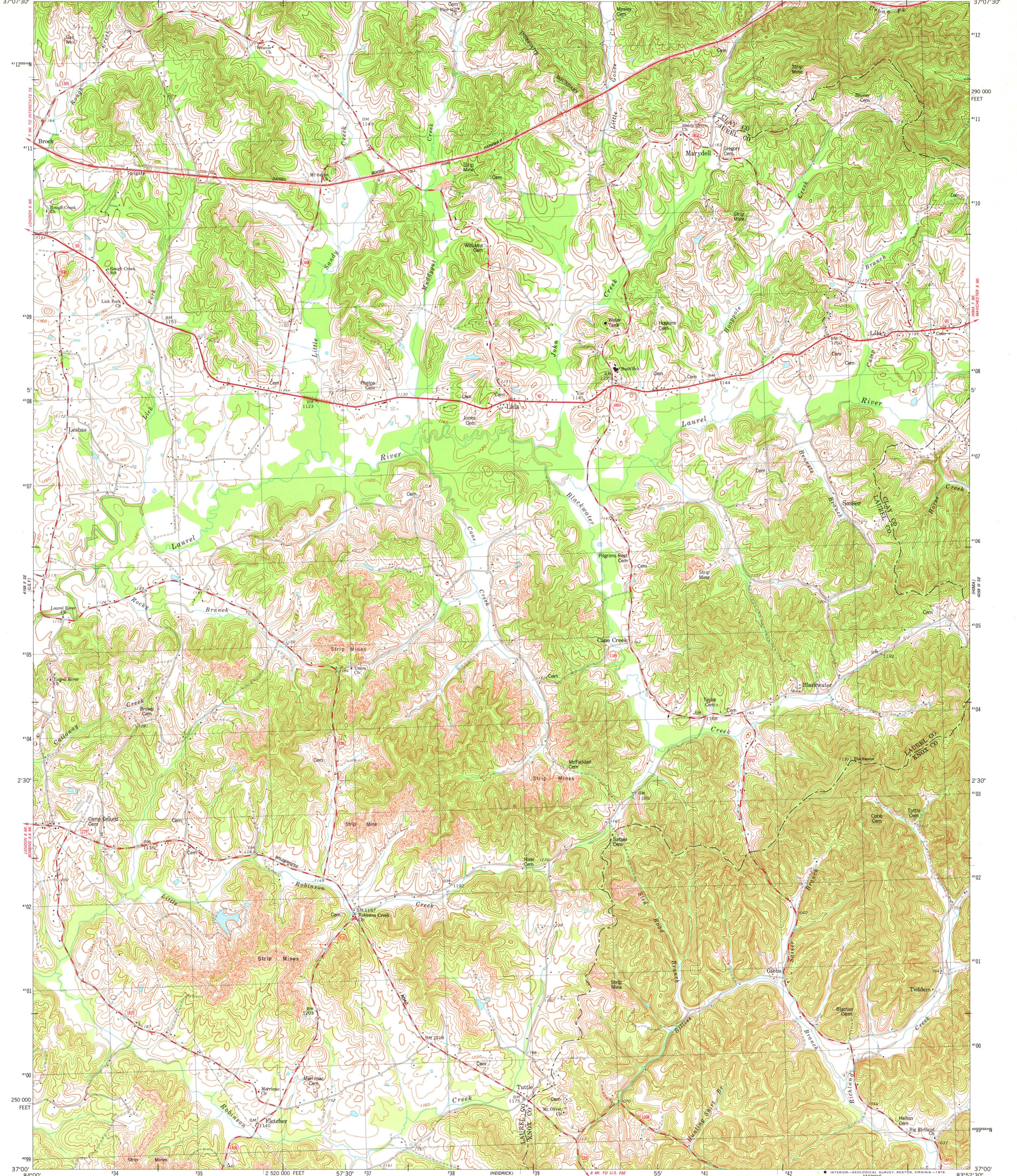
UNITED STATES
DEPARTMENT OF THE INTERIOR
GEOLOGICAL SURVEY



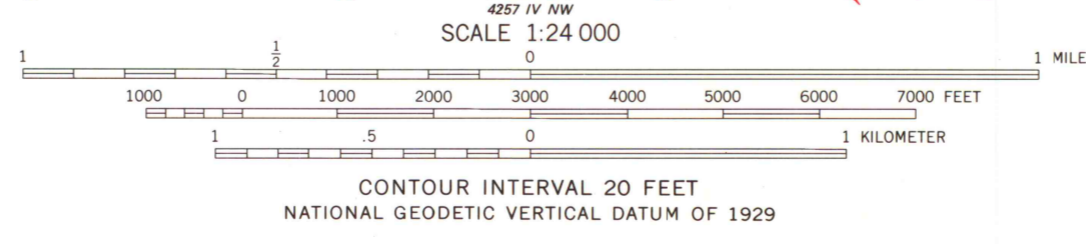
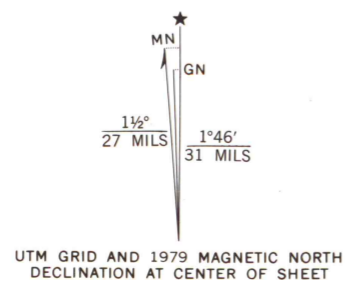
STATE OF KENTUCKY
KENTUCKY GEOLOGICAL SURVEY
UNIVERSITY OF KENTUCKY

BLACKWATER QUADRANGLE
KENTUCKY
7.5 MINUTE SERIES (TOPOGRAPHIC)
SW/4 MANCHESTER 15' QUADRANGLE

83°52'30"
37°07'30"



Mapped, edited, and published by the Geological Survey
Control by USGS, NOS/NOAA, and Tennessee Valley Authority
Topography by photogrammetric methods from aerial photographs
taken 1951. Field checked 1952. Revised from aerial
photographs taken 1976. Field checked 1977. Map edited 1979
Polyconic projection. 1927 North American datum
10,000-foot grid ticks based on Kentucky coordinate system, south zone
1000-meter Universal Transverse Mercator grid, zone 17
Dashed contours in strip mine areas not revised



SCALE 1:24 000
CONTOUR INTERVAL 20 FEET
NATIONAL GEODETIC VERTICAL DATUM OF 1929
THIS MAP COMPLIES WITH NATIONAL MAP ACCURACY STANDARDS
FOR SALE BY U. S. GEOLOGICAL SURVEY, RESTON, VIRGINIA 22092.
KENTUCKY GEOLOGICAL SURVEY, LEXINGTON, KENTUCKY 40506.
AND KENTUCKY DEPARTMENT OF COMMERCE, FRANKFORT, KENTUCKY 40601
A FOLDER DESCRIBING TOPOGRAPHIC MAPS AND SYMBOLS IS AVAILABLE ON REQUEST



ROAD CLASSIFICATION

Primary highway, hard surface	Light duty road, hard or improved surface
Secondary highway, hard surface	Unimproved road
Interstate Route	U. S. Route
	State Route

MAP AND AIR PHOTO LIBRARY

SEP 17 1979

University of Wisconsin
Madison

BLACKWATER, KY.
SW/4 MANCHESTER 15' QUADRANGLE
N3700-W8352.517.5

1979

AMS 4258 III SW-SERIES V853