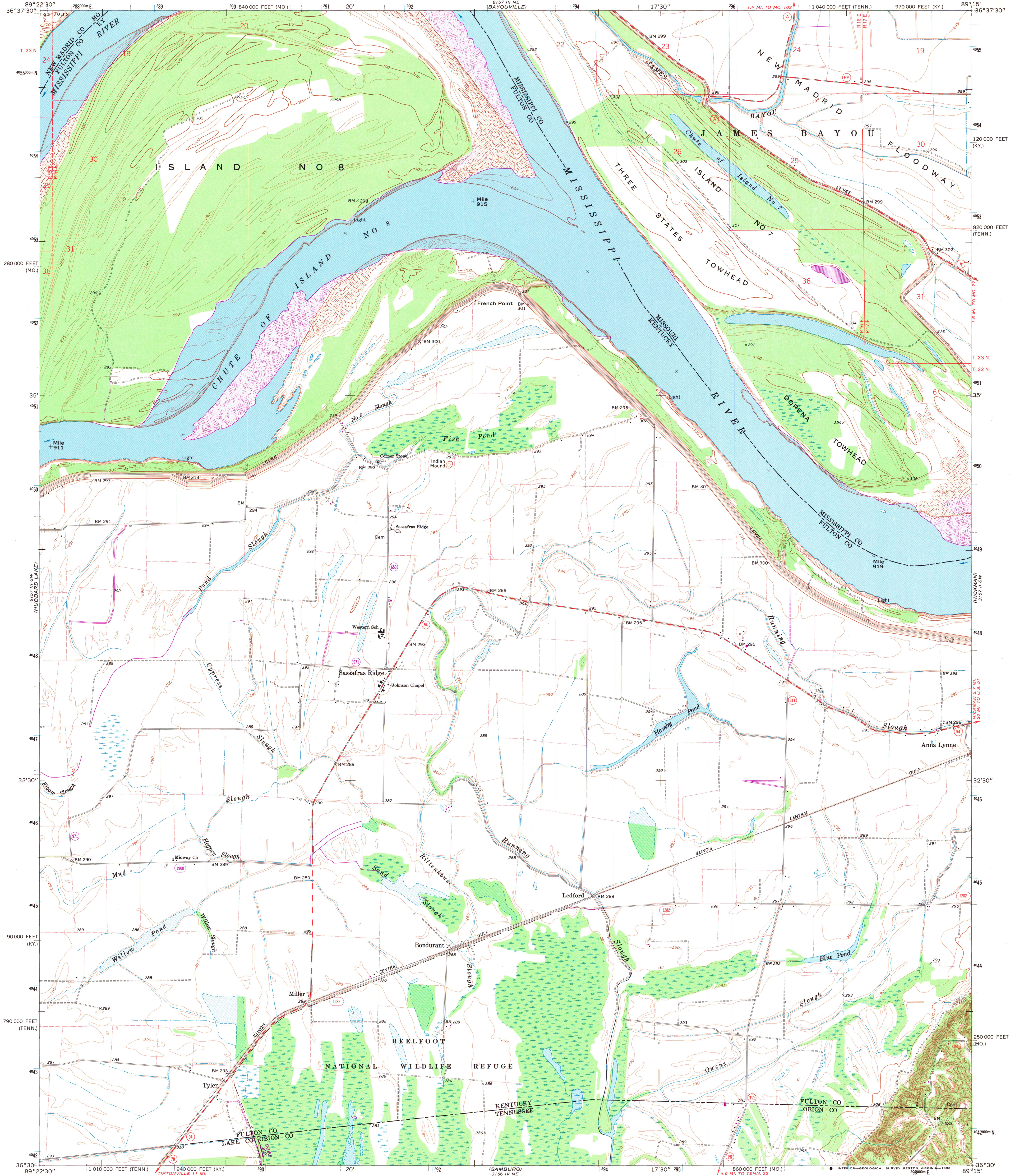


UNITED STATES
DEPARTMENT OF THE INTERIOR
GEOLOGICAL SURVEY

BONDURANT QUADRANGLE
KENTUCKY—MISSOURI—TENNESSEE
7.5 MINUTE SERIES (TOPOGRAPHIC)
SE/4 BAYOUVILLE 15' QUADRANGLE



Mapped, edited, and published by the Geological Survey in cooperation with the State of Kentucky
Control by USGS, NOS/NOAA, and USCE
Planimetry by photogrammetric methods from aerial photographs taken 1950. Topography by planimetric surveys 1950-51. Revised from aerial photographs taken 1967. Field checked 1969
Polyconic projection. 10,000-foot grid ticks based on Kentucky coordinate system, south zone, Missouri coordinate system, east zone, and Tennessee coordinate system. 1000-meter Universal Transverse Mercator grid ticks, zone 16, shown in blue. 1927 North American Datum. To place on the predicted North American Datum 1983 move the projection lines 5 meters south and 6 meters east as shown by dashed corner ticks
Fine red dashed lines indicate selected fence and field lines where generally visible on aerial photographs. This information is unchecked
There may be private inholdings within the boundaries of the National or State reservations shown on this map

SCALE 1:24,000
CONTOUR INTERVAL 5 FEET
NATIONAL GEODETIC VERTICAL DATUM OF 1929
THIS MAP COMPLIES WITH NATIONAL MAP ACCURACY STANDARDS
FOR SALE BY U. S. GEOLOGICAL SURVEY, DENVER, COLORADO 80225, OR RESTON, VIRGINIA 22092,
DIVISION OF GEOLOGY AND LAND SURVEY
MISSOURI DEPARTMENT OF NATURAL RESOURCES, ROLLA, MISSOURI 65401,
KENTUCKY GEOLOGICAL SURVEY, LEXINGTON, KENTUCKY 40506,
KENTUCKY DEPARTMENT OF COMMERCE, FRANKFORT, KENTUCKY 40601,
AND TENNESSEE DEPARTMENT OF CONSERVATION, DIVISION OF GEOLOGY, NASHVILLE, TENN. 37219
A FOLDER DESCRIBING TOPOGRAPHIC MAPS AND SYMBOLS IS AVAILABLE ON REQUEST

ROAD CLASSIFICATION
Secondary highway, all weather. Light-duty road, all weather, hard surface.
Unimproved road, fair or dry weather.
State Route

Revisions shown in purple and woodland compiled in cooperation with State of Kentucky agencies from aerial photographs taken 1981 and other sources. Contours adjusted adjacent to certain photorevised hydrographic features. This information not field checked. Map edited 1982

BONDURANT, KY.—MO.—TENN.
SE/4 BAYOUVILLE 15' QUADRANGLE
N3630—W8915/7.5
1969
PHOTOREVISED 1982
DMA 3157 III SE-SERIES V853
ARTHUR H. ROBINSON MAP LIBRARY
University of Wisconsin-Madison
DEC 16 1993