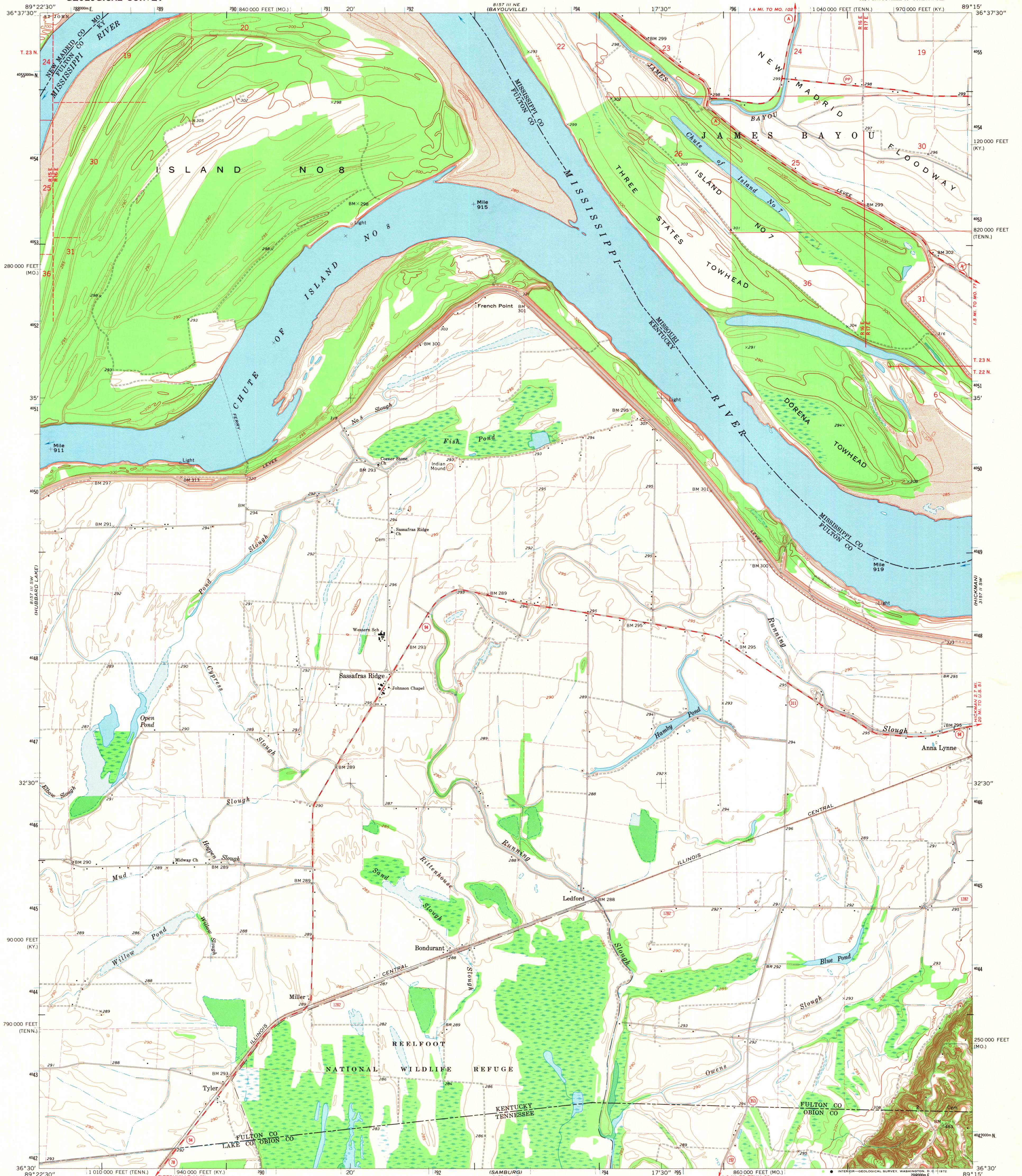


UNITED STATES
DEPARTMENT OF THE INTERIOR
GEOLOGICAL SURVEY

BONDURANT QUADRANGLE
KENTUCKY—MISSOURI—TENNESSEE
7.5 MINUTE SERIES (TOPOGRAPHIC)
SE/4 BAYOUVILLE 15' QUADRANGLE



Mapped, edited, and published by the Geological Survey
in cooperation with the State of Kentucky
Control by USGS, USC&GS, and USCE
Planimetry by photogrammetric methods from aerial photographs
taken 1950. Topography by planetable surveys 1950-1951
Revised from aerial photographs taken 1967. Field checked 1969
Polyconic projection. 1927 North American datum
10,000-foot grids based on Kentucky coordinate system, south zone,
Missouri coordinate system, east zone, and Tennessee coordinate system
1000-meter Universal Transverse Mercator grid ticks,
zone 16, shown in blue
Fine red dashed lines indicate selected fence and field lines where
generally visible on aerial photographs. This information is unchecked

SCALE 1:24,000
CONTOUR INTERVAL 5 FEET
DATUM IS MEAN SEA LEVEL
THIS MAP COMPLIES WITH NATIONAL MAP ACCURACY STANDARDS
FOR SALE BY U.S. GEOLOGICAL SURVEY, DENVER, COLORADO 80225, OR WASHINGTON, D.C. 20242,
KENTUCKY GEOLOGICAL SURVEY, LEXINGTON, KENTUCKY 40506,
KENTUCKY DEPARTMENT OF COMMERCE, FRANKFORT, KENTUCKY 40601,
MISSOURI GEOLOGICAL SURVEY, ROLLA, MISSOURI 65401,
AND TENNESSEE DIVISION OF GEOLOGY, NASHVILLE, TENNESSEE 37219
A FOLDER DESCRIBING TOPOGRAPHIC MAPS AND SYMBOLS IS AVAILABLE ON REQUEST

ROAD CLASSIFICATION
Secondary highway, all weather, Light-duty road, all weather,
hard surface Improved surface
Unimproved road, fair or dry weather
State Route
BONDURANT, KY—MO.—TENN.
SE/4 BAYOUVILLE 15' QUADRANGLE
N3630—W8915/7.5
1969
AMS 3157 III SE—SERIES V853

MAP AND AIR PHOTO
LIBRARY
FEB 15 1973