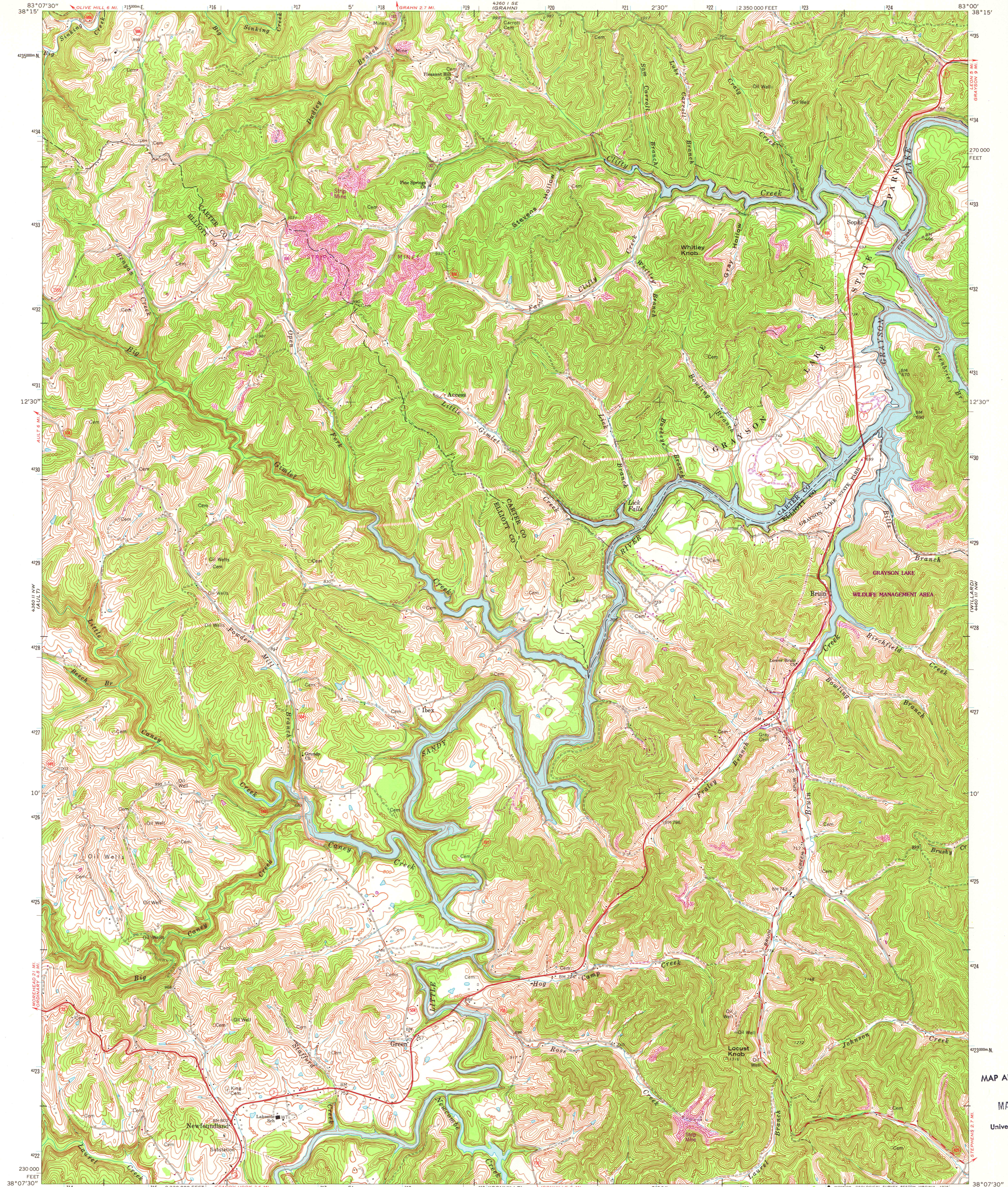
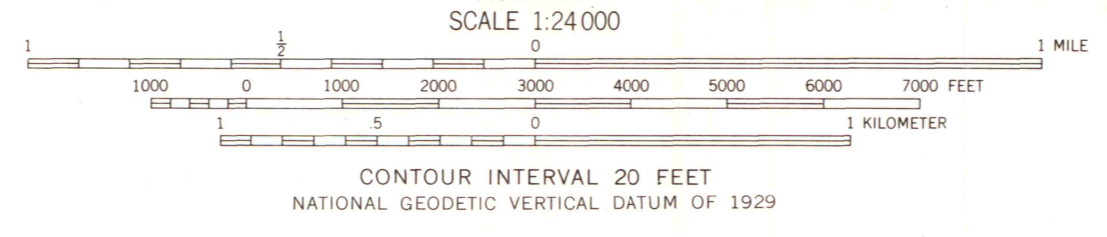


4460 11 NW
4460 11 SW

4460 11 SW
4460 11 SE



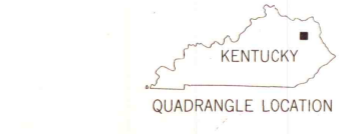
Mapped, edited, and published by the Geological Survey
Control by USGS and USC&GS
Topography by photogrammetric methods from aerial photographs
taken 1947 and 1948. Field checked 1950. Revised from aerial
photographs taken 1970. Field checked 1971
Polyconic projection. 1927 North American datum
10,000-foot grid based on Kentucky coordinate system, north zone
1000-meter Universal Transverse Mercator grid ticks,
zone 17, shown in blue
Fine red dashed lines indicate selected fence and field lines where
generally visible on aerial photographs. This information is uncorrected
Grayson Lake is subject to controlled inundation to 681 feet
There may be private inholdings within the boundaries of
the National or State reservations shown on this map



ROAD CLASSIFICATION

Primary highway, hard surface	Light-duty road, hard or improved surface
Secondary highway, hard surface	Unimproved road
○ Interstate Route	□ U. S. Route
	○ State Route

THIS MAP COMPLIES WITH NATIONAL MAP ACCURACY STANDARDS
FOR SALE BY U. S. GEOLOGICAL SURVEY, RESTON, VIRGINIA 22092
KENTUCKY GEOLOGICAL SURVEY, LEXINGTON, KENTUCKY 40506,
AND KENTUCKY DEPARTMENT OF COMMERCE, FRANKFORT, KENTUCKY 40601
A FOLDER DESCRIBING TOPOGRAPHIC MAPS AND SYMBOLS IS AVAILABLE ON REQUEST



BRUIN, KY.
NE/4 ISONVILLE 15' QUADRANGLE
N3807.5-W8300/7.5
1971
PHOTOREVISED 1978
AMS 4360 II :E-SERIES V853

Revisions shown in purple compiled from aerial
photographs taken 1975 and other source data.
This information not field checked. Map edited 1978
Boundary lines shown in purple compiled from latest
information available from the controlling authority

MAP AND AIR PHOTO
LIBRARY
MAY 12 1979
University of Wisconsin
Madison