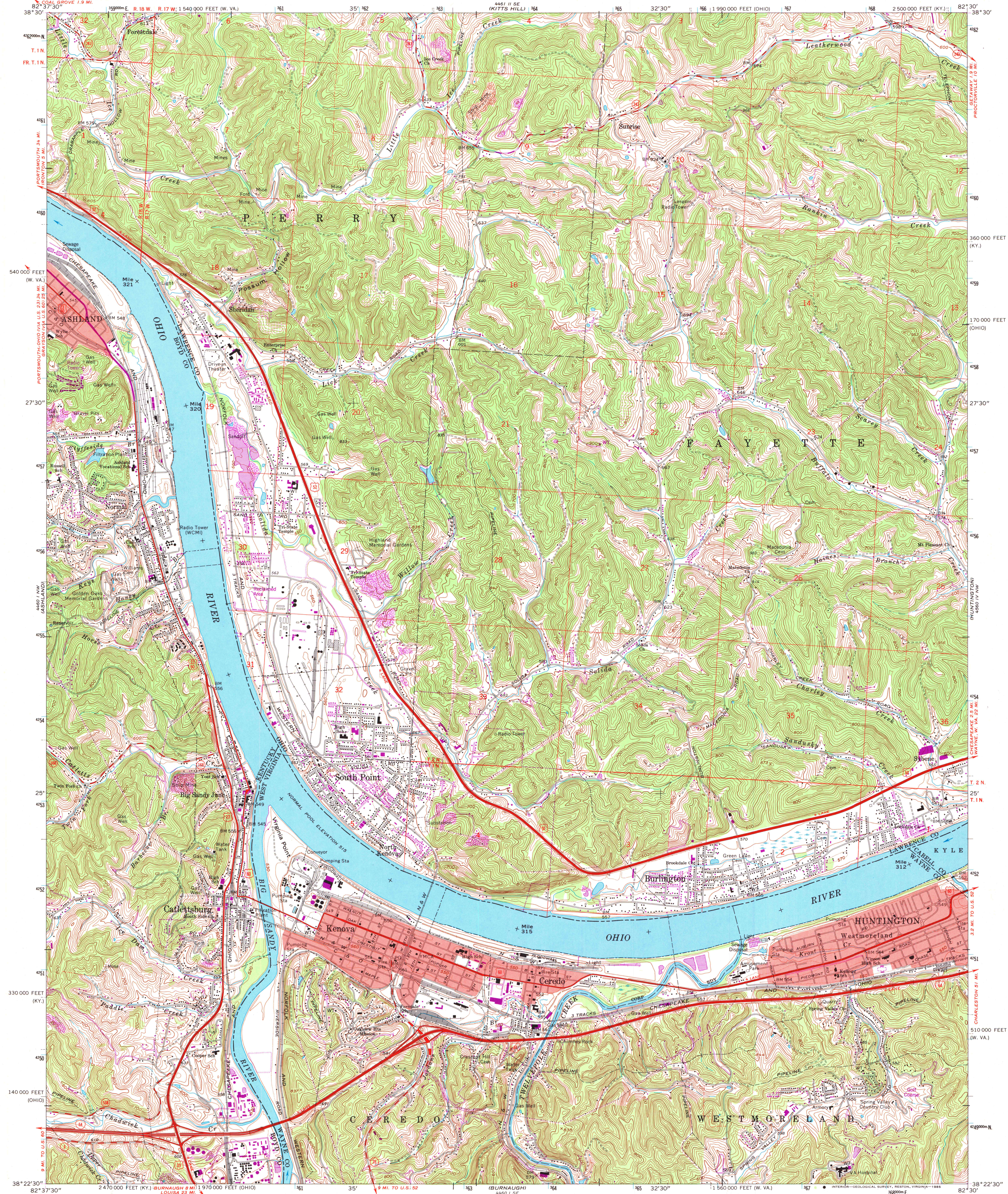


UNITED STATES  
DEPARTMENT OF THE INTERIOR  
GEOLOGICAL SURVEY

CATLETTSBURG QUADRANGLE  
KENTUCKY-OHIO-WEST VIRGINIA  
7.5 MINUTE SERIES (TOPOGRAPHIC)



Mapped, edited, and published by the Geological Survey in cooperation with State of Kentucky agencies. Revised in cooperation with State of Ohio agencies. Control by USGS, USCGS, and USCE. Topography in Kentucky by photogrammetric methods from aerial photographs taken 1952. Field checked 1953. Topography in Ohio and West Virginia by photogrammetric methods from aerial photographs taken 1955. Field checked 1957. Revised from aerial photographs taken 1957. Field checked 1968. Polyconic projection. 1927 North American datum. 10,000-foot grids based on Ohio coordinate system, south zone, West Virginia coordinate system, south zone, and Kentucky coordinate system, north zone. 1000-meter Universal Transverse Mercator grid ticks, zone 17, shown in blue. Fine red dashed lines indicate selected fence and field lines where generally visible on aerial photographs. This information is unchecked. The state boundary as shown represents the approximate position of the low water line as determined from U.S. Corps of Engineers Ohio River charts surveyed in 1914 and supplementary information. Red tint indicates areas in which only landmark buildings are shown. Ohio area lies within Congress Lands east of the Scioto River. Land lines based on the Ohio River Base.

UTM GRID AND 1985 MAGNETIC NORTH DECLINATION AT CENTER OF SHEET  
To place on the predicted North American Datum 1983, move the projection lines 6 meters south and 11 meters west as shown by dashed corner ticks.

SCALE 1:24,000  
CONTOUR INTERVAL 20 FEET  
DOTTED LINES REPRESENT 10-FOOT CONTOURS  
NATIONAL GEODETIC VERTICAL DATUM OF 1929

THIS MAP COMPLIES WITH NATIONAL MAP ACCURACY STANDARDS FOR SALE BY U.S. GEOLOGICAL SURVEY, RESTON, VIRGINIA 22092. KENTUCKY GEOLOGICAL SURVEY, LEXINGTON, KENTUCKY 40506, AND KENTUCKY DEPARTMENT OF COMMERCE, FRANKFORT, KENTUCKY 40601. A FOLDER DESCRIBING TOPOGRAPHIC MAPS AND SYMBOLS IS AVAILABLE ON REQUEST.

Revisions shown in purple compiled in cooperation with States of Ohio and West Virginia agencies from aerial photographs taken 1983. This information not field checked. Map edited 1985.

ROAD CLASSIFICATION  
Primary highway, all weather, Light-duty road, all weather, hard surface, improved surface.  
Secondary highway, all weather, Unimproved road, fair or dry hard surface, weather.  
Interstate Route U.S. Route State Route

CATLETTSBURG, KY.-OHIO-W. VA.

38082-D5-TF-024

1968  
PHOTOREVISED 1985  
DMA 4460 1 NE-SERIES V852

U.S. Regional  
Depository Copy  
DO NOT DISCARD

U.S. REGIONAL  
MAP LIBRARY

DEC 20 1985

University of Wisconsin  
Madison