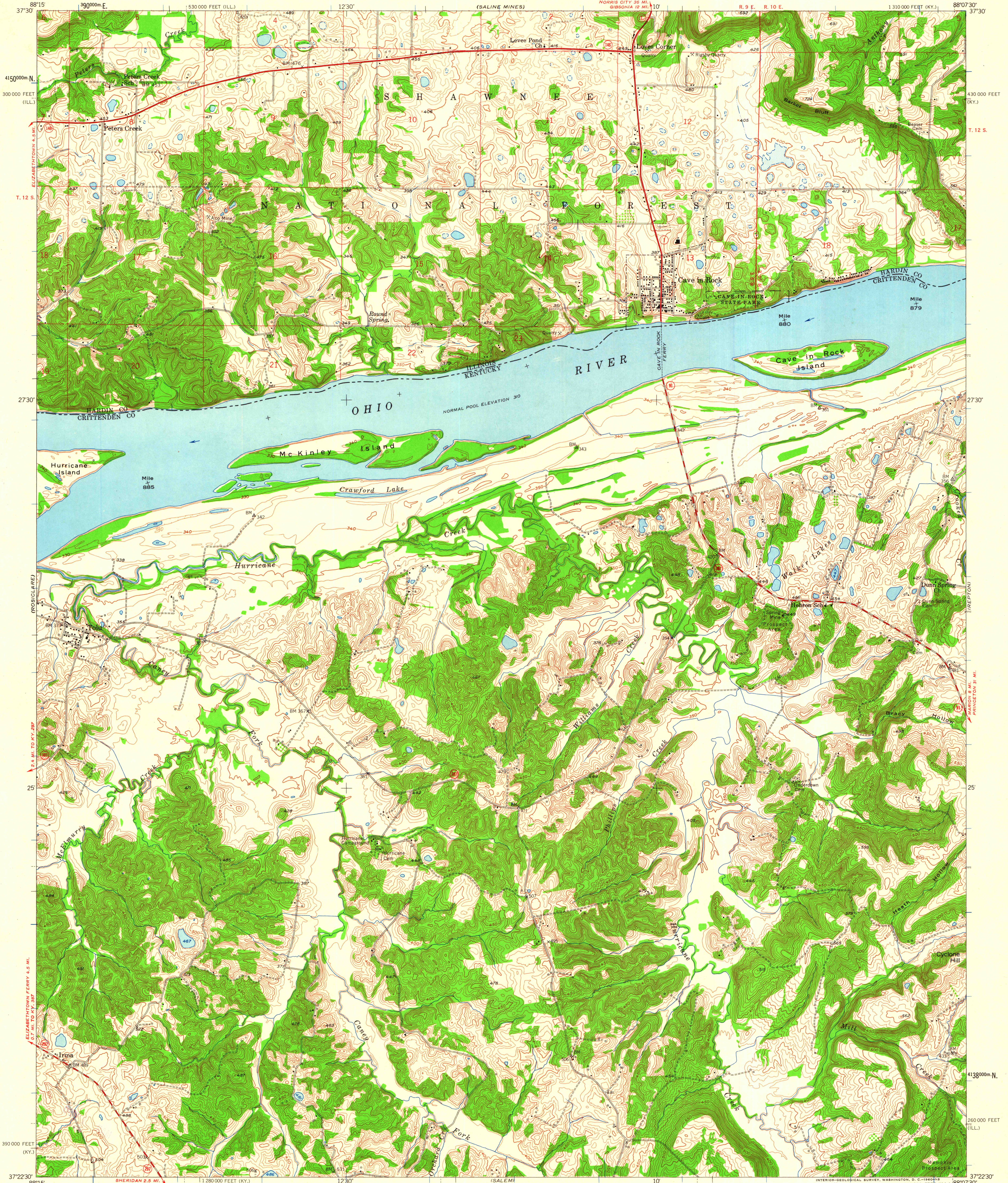


UNITED STATES
DEPARTMENT OF THE INTERIOR
GEOLOGICAL SURVEY

STATE OF KENTUCKY
DEPARTMENT OF ECONOMIC DEVELOPMENT

STATE OF ILLINOIS
WILLIAM G. STRATTON, GOVERNOR
DEPARTMENT OF REGISTRATION AND EDUCATION
VERA M. BINKS, DIRECTOR
GEOLOGICAL SURVEY DIVISION, JOHN C. FRYE, CHIEF
URBANA, ILLINOIS

CAVE IN ROCK QUADRANGLE
KENTUCKY - ILLINOIS
7.5 MINUTE SERIES (TOPOGRAPHIC)
NW 1/4 CAVE IN ROCK 15' QUADRANGLE



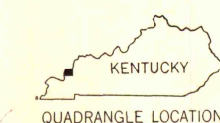
Mapped, edited, and published by the Geological Survey
Control by USGS, USC&GS, and USCE
Topography in Kentucky from aerial photographs by photogrammetric methods. Aerial photographs taken 1952. Field check 1954
Topography in Illinois from aerial photographs by photogrammetric methods. Aerial photographs taken 1957. Field check 1958
Polyconic projection. 1927 North American datum
10,000-foot grids based on Kentucky coordinate system, south zone, and Illinois coordinate system, east zone
1000-meter Universal Transverse Mercator grid ticks, zone 16, shown in blue
The state boundary as shown represents the approximate position of the low waterline as determined from U. S. Corps of Engineers Ohio River charts, surveyed 1912, 1913, and supplementary information

TRUE NORTH
MAGNETIC NORTH
APPROXIMATE MEAN DECLINATION, 1958

SCALE 1:24,000
1 0 1000 2000 3000 4000 5000 6000 7000 FEET
1 0 5 10 KILOMETER
CONTOUR INTERVAL 10 FEET
DATUM IS MEAN SEA LEVEL

THIS MAP COMPLIES WITH NATIONAL MAP ACCURACY STANDARDS
FOR SALE BY U. S. GEOLOGICAL SURVEY, WASHINGTON 25, D. C.
THE KENTUCKY DEPARTMENT OF ECONOMIC DEVELOPMENT, FRANKFORT, KENTUCKY
AND BY THE STATE GEOLOGICAL SURVEY, URBANA, ILLINOIS
A FOLDER DESCRIBING TOPOGRAPHIC MAPS AND SYMBOLS IS AVAILABLE ON REQUEST

ROAD CLASSIFICATION
Heavy-duty ——— Light-duty ———
Medium-duty ——— Unimproved dirt ———
○ State Route



CAVE IN ROCK, KY.-ILL.
NW 1/4 CAVE IN ROCK 15' QUADRANGLE
N3722.5-W8807.5/7.5
1958

MAP AND AIR PHOTO LIBRARY
University of Wisconsin