

(COUNTY)  
1:62,500

UNITED STATES  
DEPARTMENT OF THE INTERIOR  
GEOLOGICAL SURVEY

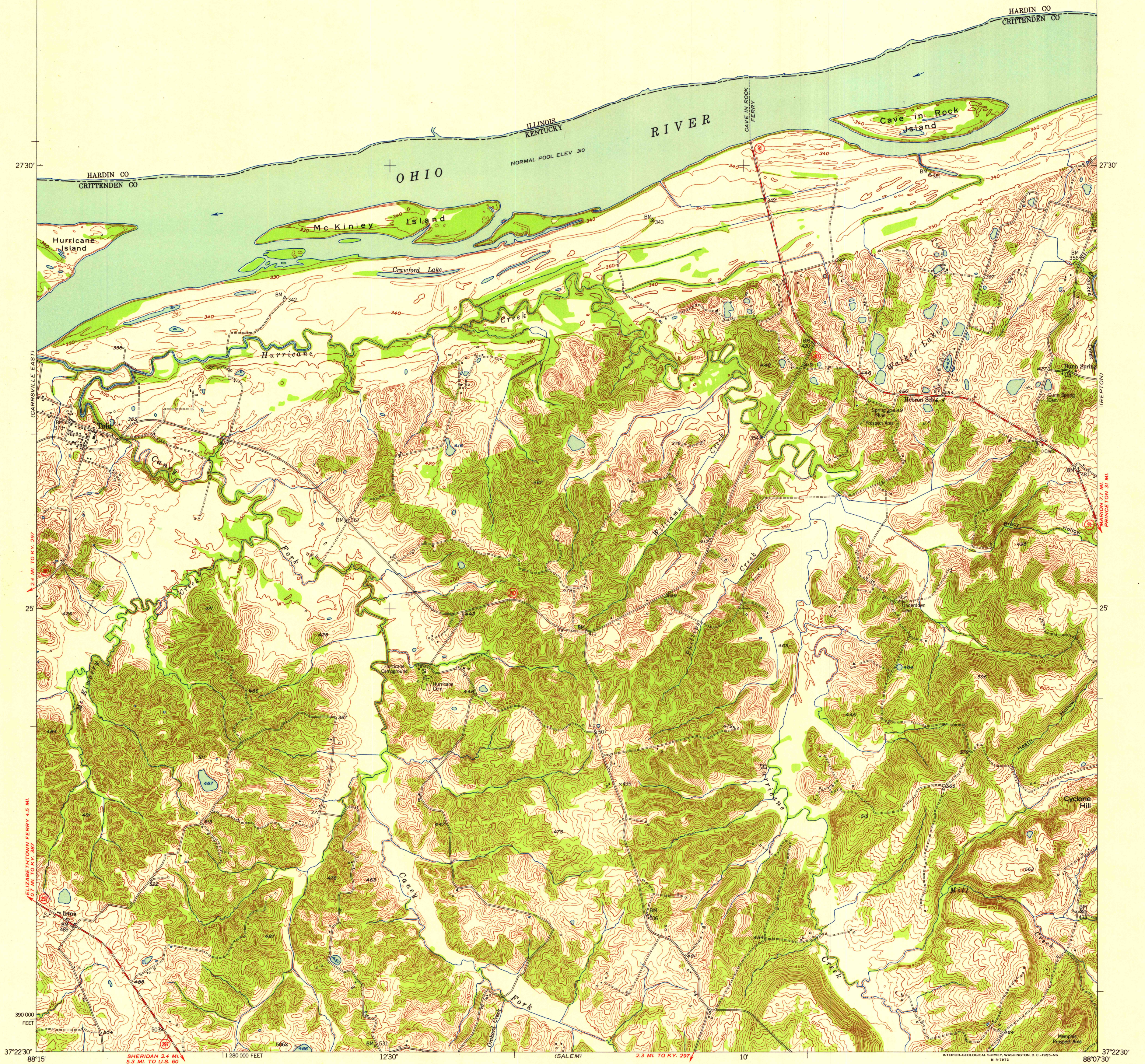
STATE OF KENTUCKY  
AGRICULTURAL AND INDUSTRIAL DEVELOPMENT BOARD  
(SHAWNEETOWN 1:62,500)

CAVE IN ROCK QUADRANGLE  
KENTUCKY-ILLINOIS  
7.5 MINUTE SERIES (TOPOGRAPHIC)  
NW 1/4 CAVE IN ROCK 15' QUADRANGLE  
1:310,000 FEET

(DEPTOVEN)

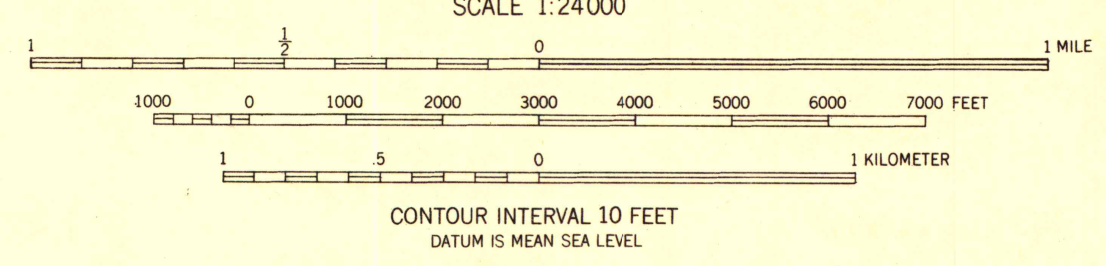
430 000  
FEET

This area is covered by 1:62500 scale map  
of Cave in Rock 15 minute quadrangle



Maped, edited, and published by the Geological Survey  
Control by USGS, USC&GS, and USCE  
Topography from aerial photographs by Kelsh plotter  
Aerial photographs taken 1952. Field check 1954  
Polyconic projection. 1927 North American datum  
10,000-foot grid based on Kentucky coordinate system,  
south zone

TRUE NORTH  
MAGNETIC NORTH  
APPROXIMATE MEAN  
DECLINATION, 1954



THIS MAP COMPLIES WITH NATIONAL MAP ACCURACY STANDARDS  
FOR SALE BY U.S. GEOLOGICAL SURVEY, WASHINGTON 25, D.C.  
AND KENTUCKY AGRICULTURAL AND INDUSTRIAL DEVELOPMENT BOARD, FRANKFORT, KENTUCKY  
A FOLDER DESCRIBING TOPOGRAPHIC MAPS AND SYMBOLS IS AVAILABLE ON REQUEST



ROAD CLASSIFICATION  
Heavy-duty... Light-duty...  
Medium-duty... Unimproved dirt...  
U.S. Route... State Route...

CAVE IN ROCK, KY. 411  
NW 1/4 CAVE IN ROCK 15' QUADRANGLE  
N3722.5-W8807.5/7.5  
1954

UNIVERSITY OF WISCONSIN  
Department of Geography