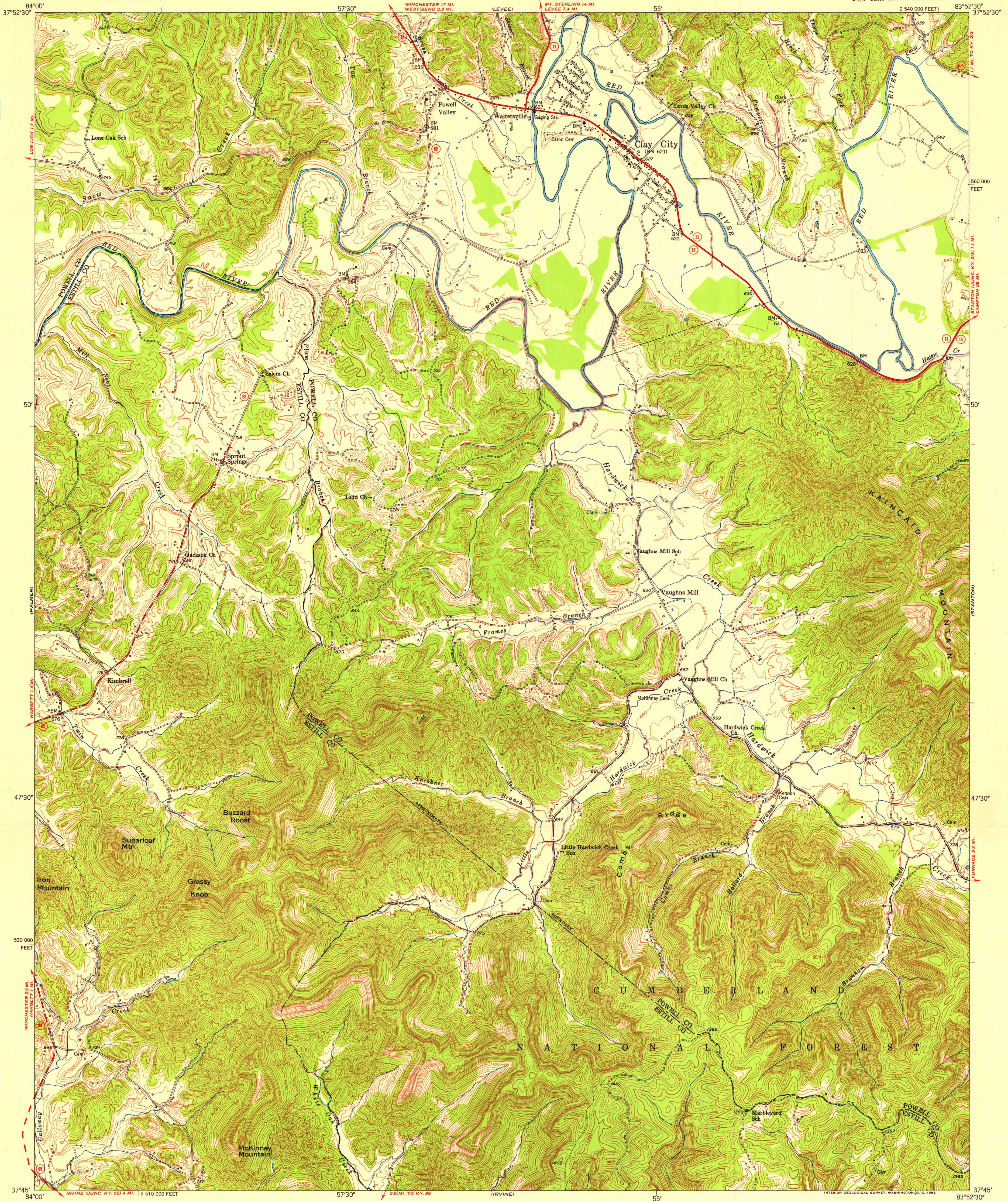
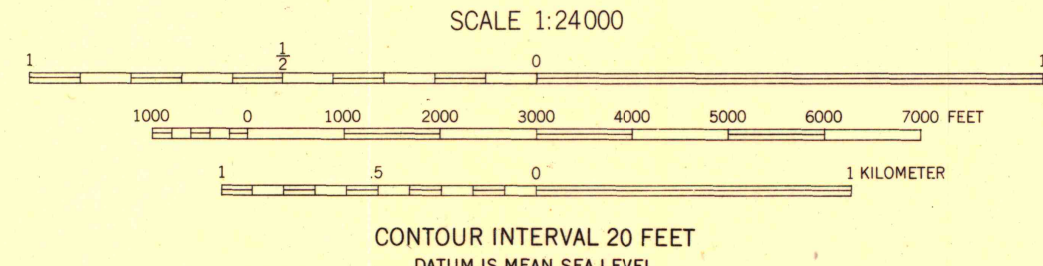


K17



Mapped, edited, and published by the Geological Survey Control by USGS, USC&GS, and USCE Topography from aerial photographs by multiplex methods Aerial photographs taken 1950. Field check 1952 Polyconic projection. 1927 North American datum 10,000-foot grid based on Kentucky coordinate system, south zone

TRUE NORTH MAGNETIC NORTH APPROXIMATE MEAN DECLINATION, 1952



ROAD CLASSIFICATION Heavy-duty 4 LANE 16 LANE Light-duty Unimproved dirt U.S. Route State Route



THIS MAP COMPLIES WITH NATIONAL MAP ACCURACY STANDARDS FOR SALE BY U.S. GEOLOGICAL SURVEY, WASHINGTON 25, D.C. AND KENTUCKY AGRICULTURAL AND INDUSTRIAL DEVELOPMENT BOARD, FRANKFORT, KENTUCKY A FOLDER DESCRIBING TOPOGRAPHIC MAPS AND SYMBOLS IS AVAILABLE ON REQUEST

CLAY CITY, KY. SW/4 CLAY CITY 15' QUADRANGLE N3745-W8352.5/7.5 UNIVERSITY OF WISCONSIN Department of Geography 1952