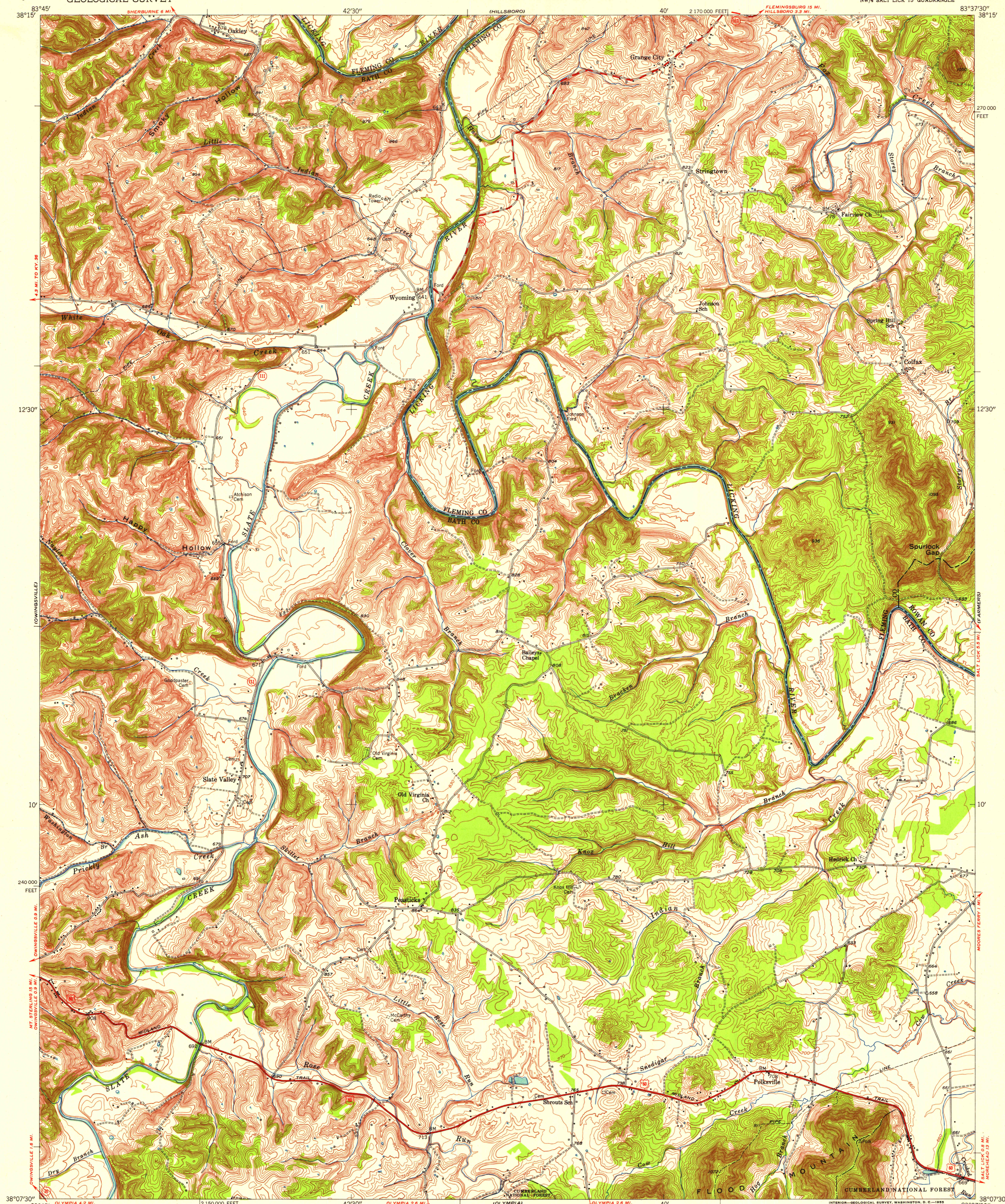
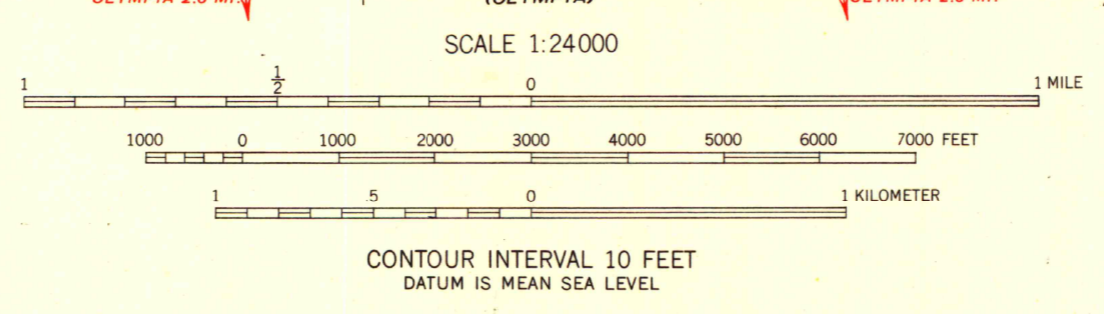


H19



83°45' OLYMPIA 4.2 MI.
38°15' FRENCHBURG 12.0 MI. U.S. 4001 18 MI.
Mapped, edited, and published by the Geological Survey
Control by USGS, USCGS, and USCE
Topography from aerial photographs by stereophotogrammetric
methods. Aerial photographs taken 1950. Field check 1953
Polyconic projection. 1927 North American datum
10,000-foot grid based on Kentucky coordinate system,
north zone



ROAD CLASSIFICATION

Heavy-duty	4 LANE 16 LANE	Light-duty
Medium-duty	4 LANE 16 LANE	Unimproved dirt
U. S. Route		Slate Route

TRUE NORTH
MAGNETIC NORTH
APPROXIMATE MEAN
DECLINATION, 1953



THIS MAP COMPLIES WITH NATIONAL MAP ACCURACY STANDARDS
FOR SALE BY U. S. GEOLOGICAL SURVEY, WASHINGTON 25, D. C.
AND KENTUCKY AGRICULTURAL AND INDUSTRIAL DEVELOPMENT BOARD, FRANKFORT, KENTUCKY
A FOLDER DESCRIBING TOPOGRAPHIC MAPS AND SYMBOLS IS AVAILABLE ON REQUEST

UNIVERSITY OF MICHIGAN
Department of Geography

COLFAX, KY.
NW/4 SALT LICK 15' QUADRANGLE
N3807.5-W8337.5/7.5

1953