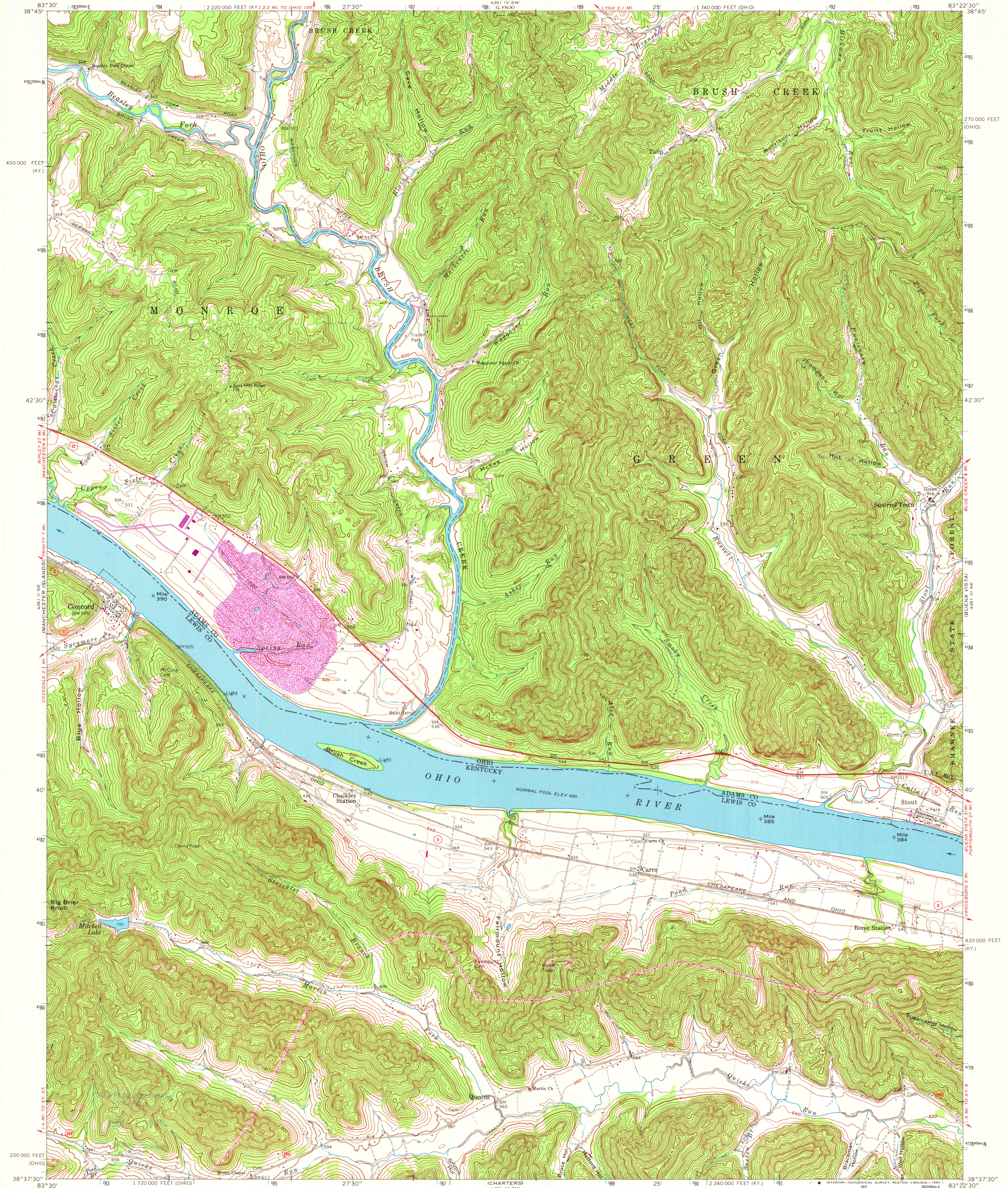
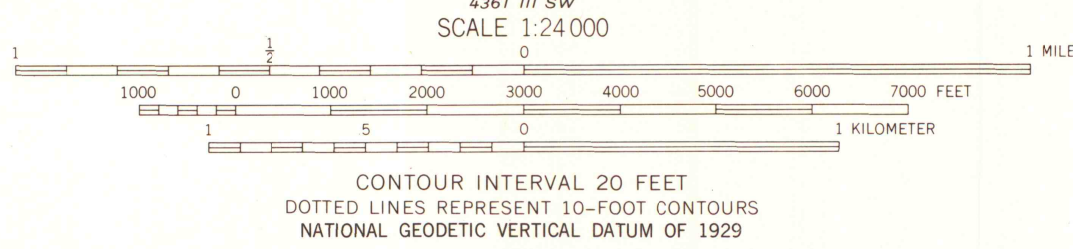
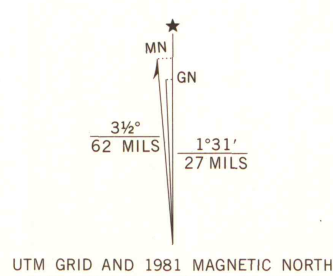


UNITED STATES
DEPARTMENT OF THE INTERIOR
GEOLOGICAL SURVEY

CONCORD QUADRANGLE
KENTUCKY-OHIO
7.5 MINUTE SERIES (TOPOGRAPHIC)
NW/4 VANCEBURG 15' QUADRANGLE



Mapped, edited, and published by the Geological Survey in cooperation with State of Kentucky Agencies Revised in cooperation with State of Ohio agencies
Control by USGS, NOS/NOAA, and USCE
Topography by photogrammetric methods from aerial photographs taken 1947. Field checked 1949. Revised from aerial photographs taken 1966 and 1967. Field checked 1967
Polyconic projection. 10,000-foot grid ticks based on Ohio coordinate system, south zone, and Kentucky coordinate system, north zone. 1000-meter Universal Transverse Mercator grid ticks, zone 17, shown in blue. 1927 North American Datum. To place on the predicted North American Datum 1983 move the projection lines 4 meters south and 9 meters west as shown by dashed corner ticks
The state boundary as shown represents the approximate position of the low water line as determined from U. S. Corps of Engineers Ohio River charts, surveyed 1913, and supplementary information Ohio area lies within the Virginia Military District
There may be private inholdings within the boundaries of the National or State reservations shown on this map



CONTOUR INTERVAL 20 FEET
DOTTED LINES REPRESENT 10-FOOT CONTOURS
NATIONAL GEODETIC VERTICAL DATUM OF 1929

THIS MAP COMPLIES WITH NATIONAL MAP ACCURACY STANDARDS FOR SALE BY U. S. GEOLOGICAL SURVEY, RESTON, VIRGINIA 22092, KENTUCKY GEOLOGICAL SURVEY, LEXINGTON, KENTUCKY 40506, AND KENTUCKY DEPARTMENT OF COMMERCE, FRANKFORT, KENTUCKY 40601 A FOLDER DESCRIBING TOPOGRAPHIC MAPS AND SYMBOLS IS AVAILABLE ON REQUEST



ROAD CLASSIFICATION
Primary highway, all weather, hard surface
Light-duty road, all weather, improved surface
Unimproved road, fair or dry weather
U. S. Route
State Route

CONCORD, KY.-OHIO
NW/4 VANCEBURG 15' QUADRANGLE
N3837.5-W8322.5/7.5

1967
PHOTOREVISED 1981
DMA 4361 III NW-SERIES V852

Revisions shown in purple and woodland compiled in cooperation with State of Ohio agencies from aerial photographs taken 1979 and other sources. This information not field checked. Map edited 1981

MAP AND AIR PHOTO LIBRARY
University of Wisconsin, Madison