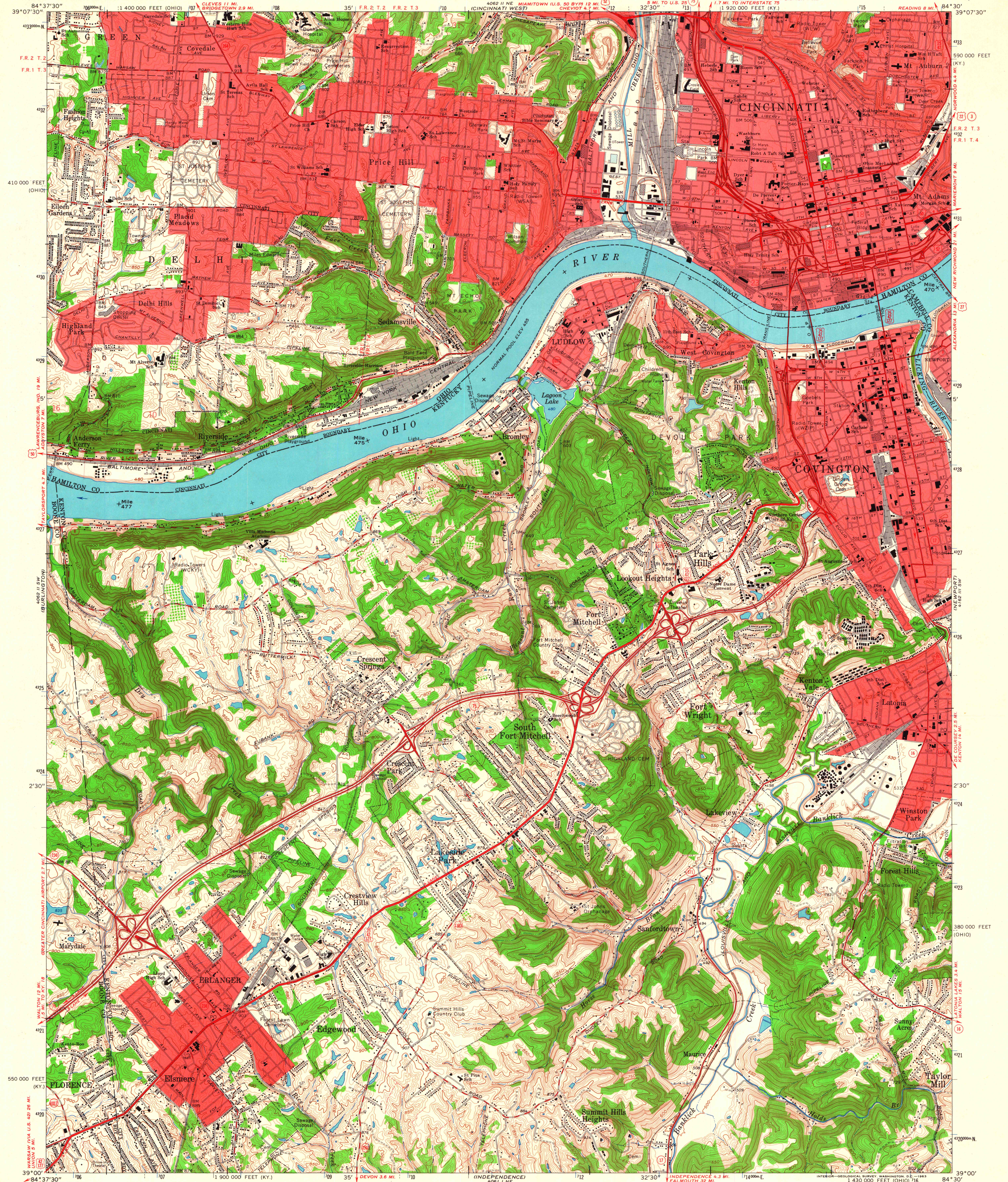


UNITED STATES  
DEPARTMENT OF THE INTERIOR  
GEOLOGICAL SURVEY

STATE OF KENTUCKY  
KENTUCKY GEOLOGICAL SURVEY  
UNIVERSITY OF KENTUCKY  
(CINCINNATI WEST)

COVINGTON QUADRANGLE  
KENTUCKY—OHIO  
7.5 MINUTE SERIES (TOPOGRAPHIC)

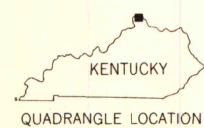


Maped, edited, and published by the Geological Survey  
Control by USGS, USC&GS, USCE, and the City of Cincinnati  
Topography by photogrammetric methods from aerial photographs  
taken 1949, and in part by the City of Cincinnati  
Field checked 1950 and 1953. Revised 1961  
Polyconic projection. 1927 North American datum  
10,000-foot grids based on Kentucky coordinate system,  
north zone, and Ohio coordinate system, south zone  
1,000-meter Universal Transverse Mercator grid ticks, zone 16, shown in blue  
Fine red dashed lines indicate selected fence and field lines where  
generally visible on aerial photographs. This information is unchecked  
The state boundary as shown represents the approximate position of the  
low water line as determined by U.S. Corps of Engineers  
Ohio River charts, surveyed 1913 and 1914, and supplementary information  
Red tint indicates areas in which only landmark buildings are shown  
Ohio area lies within the Between the Miamis. Land lines based on the  
Great Miami River Base. Dotted land lines established by private  
subdivision of the Symmes Purchase

UTM GRID AND 1961 MAGNETIC NORTH  
DECLINATION AT CENTER OF SHEET

SCALE 1:24,000  
CONTOUR INTERVAL 10 FEET  
DATUM IS MEAN SEA LEVEL

THIS MAP COMPLIES WITH NATIONAL MAP ACCURACY STANDARDS  
FOR SALE BY U.S. GEOLOGICAL SURVEY, WASHINGTON 25, D. C.  
KENTUCKY GEOLOGICAL SURVEY, LEXINGTON, KENTUCKY,  
AND KENTUCKY DEPARTMENT OF COMMERCE, FRANKFORT, KENTUCKY  
A FOLDER DESCRIBING TOPOGRAPHIC MAPS AND SYMBOLS IS AVAILABLE ON REQUEST



MAP AND AIR PHOTO LIBRARY  
University of Wisconsin

ROAD CLASSIFICATION  
Heavy-duty ——— Light-duty ———  
Medium-duty ——— Unimproved dirt ———  
Interstate Route U.S. Route State Route

COVINGTON, KY.—OHIO  
SE/4 WEST CINCINNATI 15' QUADRANGLE  
N3900—W8430/7.5

AMS 4062 II SE—SERIES V853