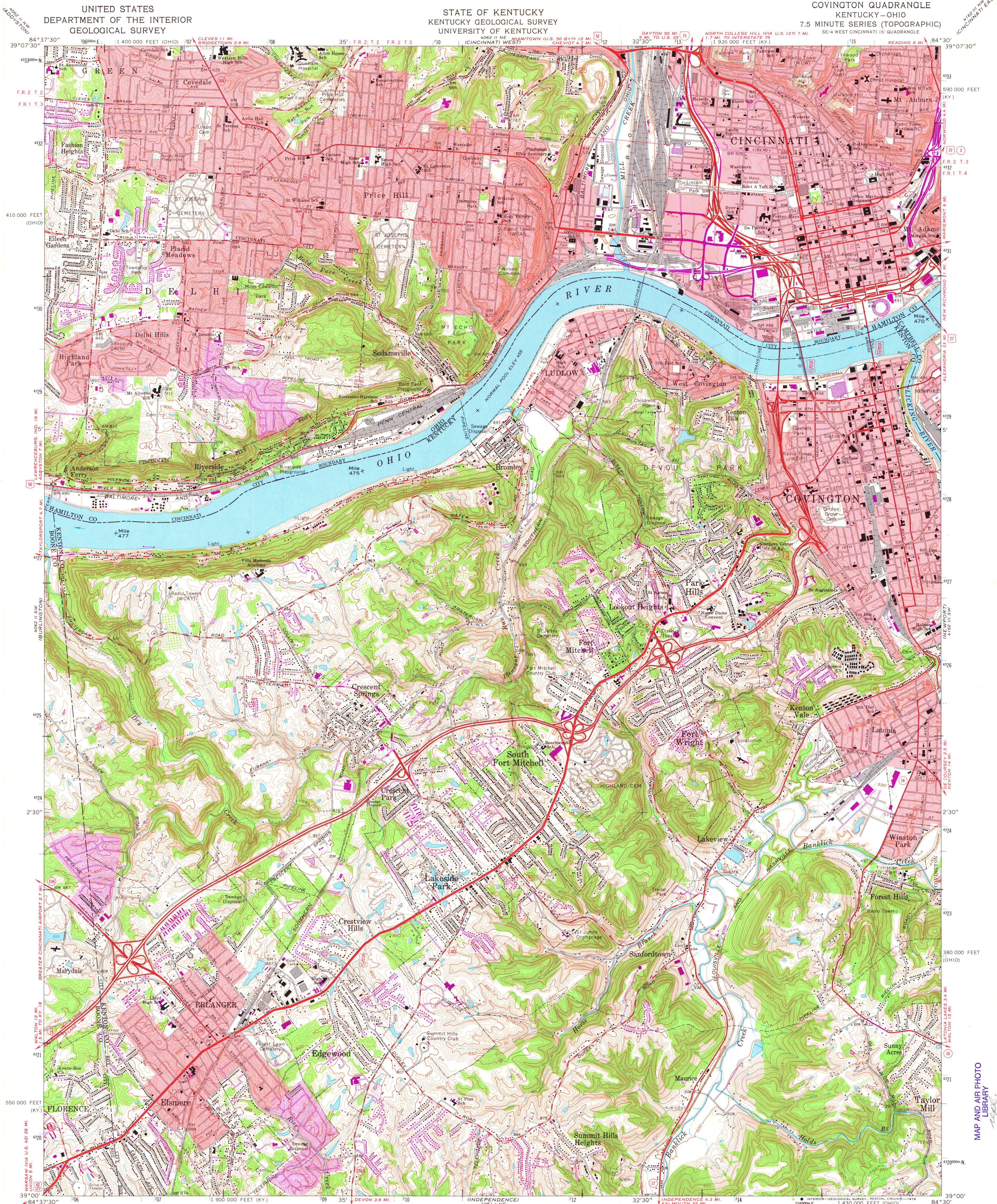


UNITED STATES
DEPARTMENT OF THE INTERIOR
GEOLOGICAL SURVEY

STATE OF KENTUCKY
KENTUCKY GEOLOGICAL SURVEY
UNIVERSITY OF KENTUCKY

COVINGTON QUADRANGLE
KENTUCKY-OHIO
7.5 MINUTE SERIES (TOPOGRAPHIC)



Maped, edited, and published by the Geological Survey
Control by USGS, USC&GS, USCE, and the City of Cincinnati
Topography by photogrammetric methods from aerial photographs
taken 1949, and in part by the City of Cincinnati
Field checked 1950 and 1953. Revised 1961
Polyconic projection. 1927 North American datum
10,000-foot grids based on Kentucky coordinate system,
north zone, and Ohio coordinate system, south zone
1000-meter Universal Transverse Mercator grid ticks, zone 16, shown in blue
Fine red dashed lines indicate selected fence and field lines where
generally visible on aerial photographs. This information is unchecked
The state boundary as shown represents the approximate position of the
low water line as determined from U.S. Corps of Engineers
Ohio River charts, surveyed 1913 and 1914, and supplementary information
Red tint indicates areas in which only landmark buildings are shown
Ohio area lies within the Between the Miamis. Land lines based on the
Great Miami River Base. Dotted land lines established by private
subdivision of the Symmes Purchase

UTM GRID AND 1969 MAGNETIC NORTH
DECLINATION AT CENTER OF SHEET

SCALE 1:24,000
NATIONAL GEODETIC VERTICAL DATUM OF 1929
CONTOUR INTERVAL 10 FEET

ROAD CLASSIFICATION
Heavy-duty ——— Light-duty ———
Medium-duty ——— Unimproved dirt ———
Interstate Route ——— U.S. Route ——— State Route ———

COVINGTON, KY. - OHIO
SE/4 WEST CINCINNATI 15' QUADRANGLE
N3900-W8430/7.5

1961
PHOTOREVISED 1969
AMS 4062 II SE-SERIES 7853

Revisions shown in purple compiled in cooperation with
Kentucky Geological Survey from aerial photographs taken 1969
This information not field checked
Purple tint indicates extension of urban areas