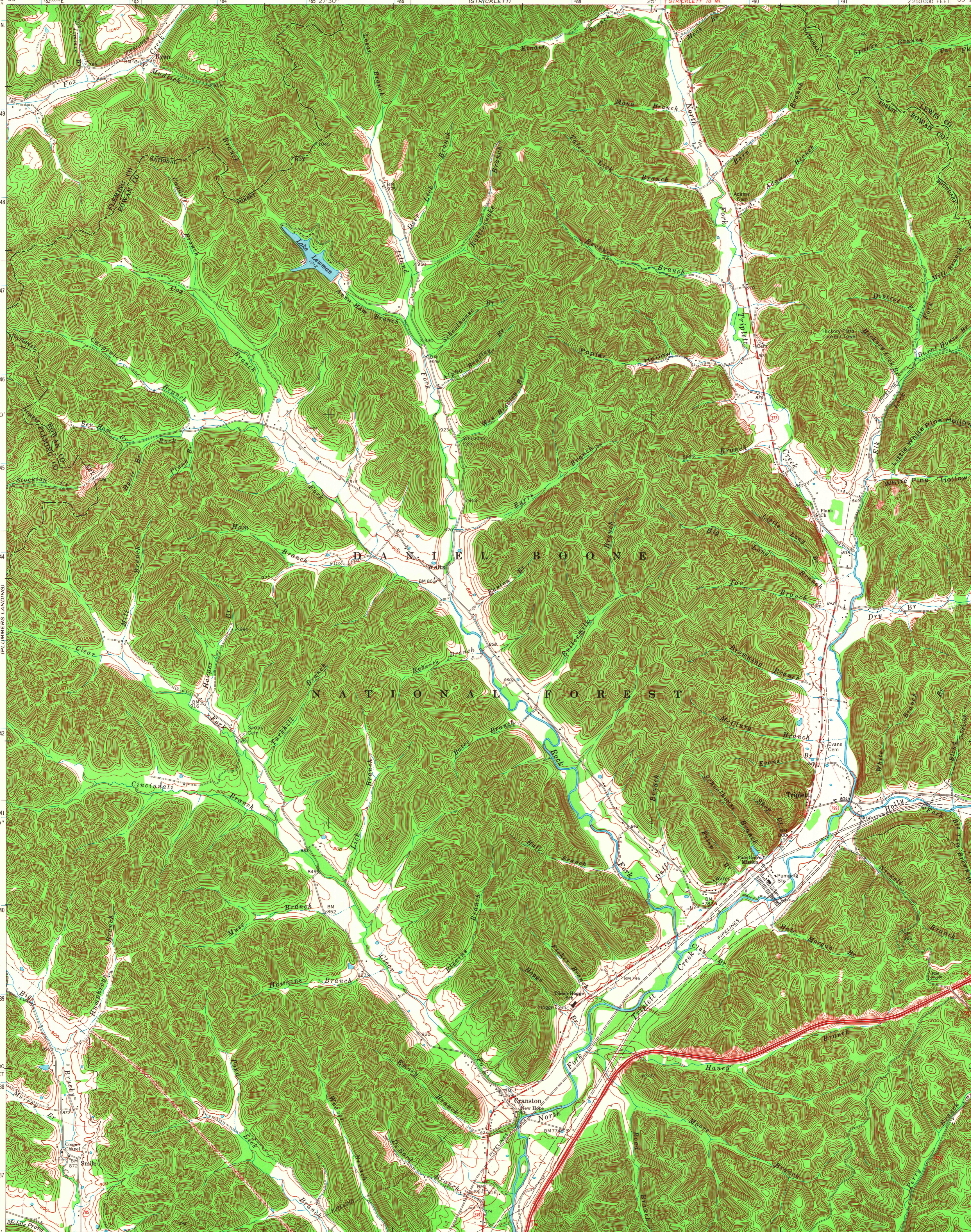


83° 30' 22" W 22' 30" 4250000 N 782 784 786 788 790 791 2 250 000 FEET 83° 22' 30" 38° 22' 30"



Mapped, edited, and published by the Geological Survey
Control by USGS and USCGS
Topography by photogrammetric methods from aerial photographs taken 1947 and 1948. Field checked 1951. Revised from aerial photographs taken 1969. Field checked 1970
Polyconic projection. 1927 North American datum
10,000-foot grid based on Kentucky coordinate system, north zone
1000-meter Universal Transverse Mercator grid ticks, zone 17, shown in blue
Fine red dashed lines indicate selected fence and field lines where generally visible on aerial photographs. This information is unchecked

UTM GRID AND 1970 MAGNETIC NORTH DECLINATION AT CENTER OF SHEET

SCALE 1:24,000
CONTOUR INTERVAL 20 FEET
DATUM IS MEAN SEA LEVEL

THIS MAP COMPLIES WITH NATIONAL MAP ACCURACY STANDARDS FOR SALE BY U.S. GEOLOGICAL SURVEY, WASHINGTON, D. C. 20242, KENTUCKY GEOLOGICAL SURVEY, LEXINGTON, KENTUCKY 40506, AND KENTUCKY DEPARTMENT OF COMMERCE, FRANKFORT, KENTUCKY 40601 A FOLDER DESCRIBING TOPOGRAPHIC MAPS AND SYMBOLS IS AVAILABLE ON REQUEST

ROAD CLASSIFICATION
Primary highway, hard surface
Secondary highway, hard surface
Unimproved road
Interstate Route
U. S. Route
State Route
Light-duty road, hard or improved surface
Unimproved road

MAP AND AIR PHOTO LIBRARY
APR 3 1973
University of Wisconsin

CRANSTON, KY.
SW 1/4 CRANSTON 15' QUADRANGLE
N3815-W8322.5/7.5
1970
AMS 4360 IV SW--SERIES V853