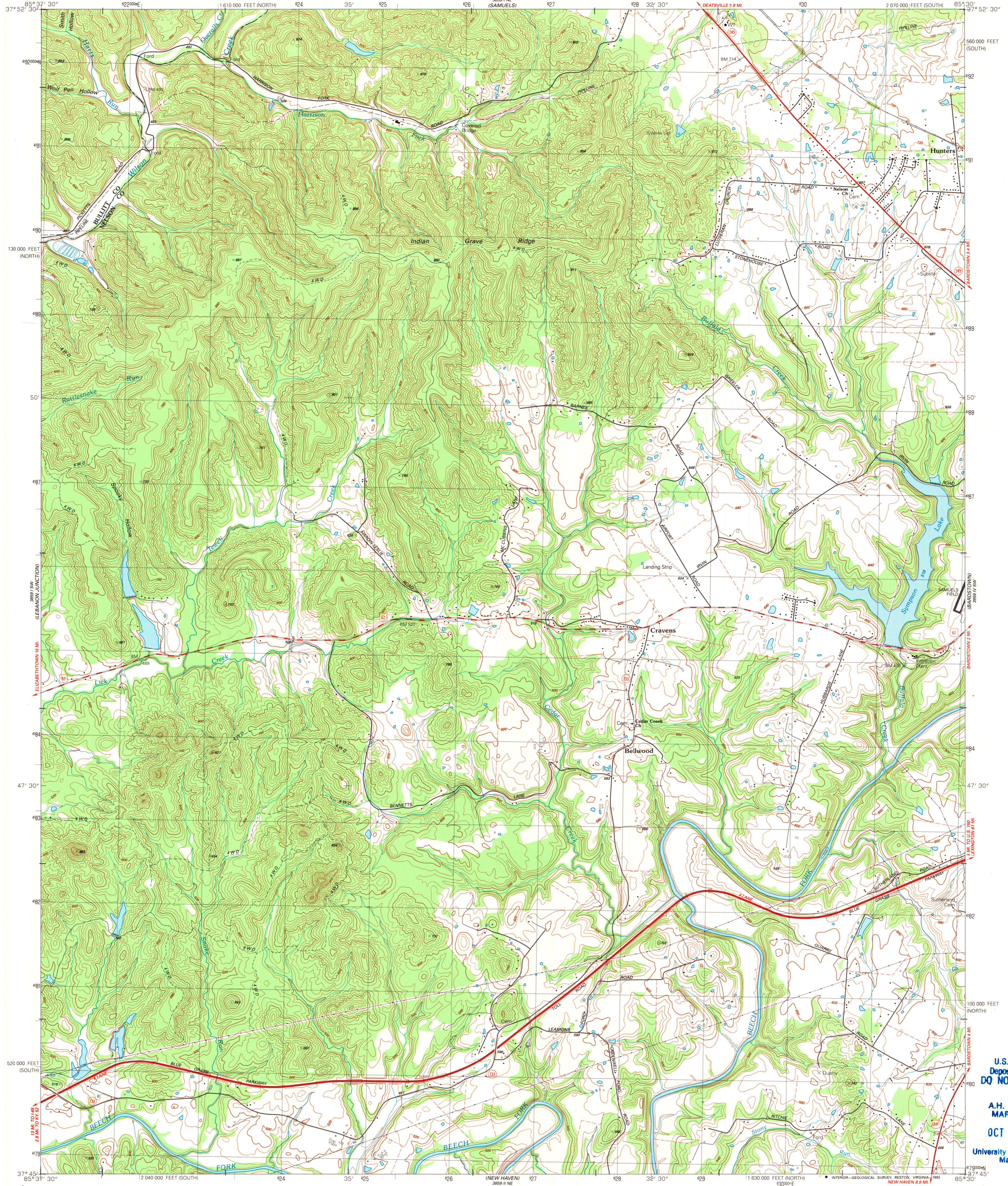


UNITED STATES
DEPARTMENT OF THE INTERIOR
GEOLOGICAL SURVEY

CRAVENS QUADRANGLE
KENTUCKY
7.5 MINUTE SERIES (TOPOGRAPHIC)
SE 1/4 SHEPHERDSVILLE 15' QUADRANGLE



Produced by the United States Geological Survey

Control by USGS and NOS/NOAA

Compiled from aerial photographs taken 1987

Field checked 1988. Map edited 1992

Projection: Kentucky coordinate system, south zone

(Lambert conformal conic)

10,000-foot grid ticks: Kentucky coordinate

system, south and north zones

1000-meter Universal Transverse Mercator grid, zone 16

1927 North American Datum

The difference between 1927 North American Datum and North

American Datum of 1983 (NAD 83) for 7.5-minute intersections

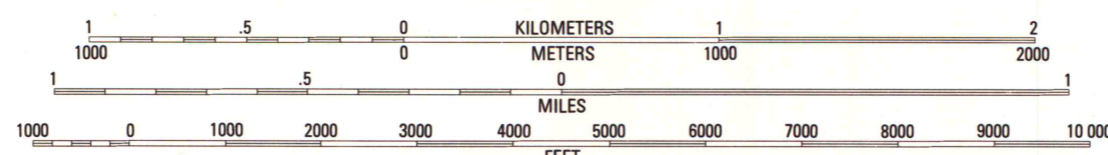
is given in USGS Bulletin 1875. The NAD 83 is shown by

dashed corner ticks

Fine red dashed lines indicate selected fence and field lines where

generally visible on aerial photographs. This information is unchecked

SCALE 1:24 000



CONTOUR INTERVAL 20 FEET

NATIONAL GEODETIC VERTICAL DATUM OF 1929

THIS MAP COMPLEYS WITH NATIONAL MAP ACCURACY STANDARDS
FOR SALE BY U.S. GEOLOGICAL SURVEY, DENVER, CO. ORADO 80225, OR RESTON, VIRGINIA 22092
KENTUCKY GEOLOGICAL SURVEY, LEXINGTON, KENTUCKY 40506
AND KENTUCKY DEPARTMENT OF COMMERCE, FRANKFORT, KENTUCKY 40601
A FOLDER DESCRIBING TOPOGRAPHIC MAPS AND SYMBOLS IS AVAILABLE ON REQUEST

ROAD CLASSIFICATION

- Primary highway, light-duty road, hard or hard surface
- Secondary highway, hard surface
- Interstate Route
- U.S. Route
- State Route
- Light-duty road, hard or improved surface
- Unimproved road

U.S. Geological
Depository Copy
DO NOT DISCARD

A.H. ROBINSON
MAP LIBRARY

OCT 19 1992

University of Wisconsin
Madison

CRAVENS, KY.
SE 1/4 SHEPHERDSVILLE 15' QUADRANGLE
37085-G5-TF-024

1992

DMA 3859 1 SE-SERIES V853