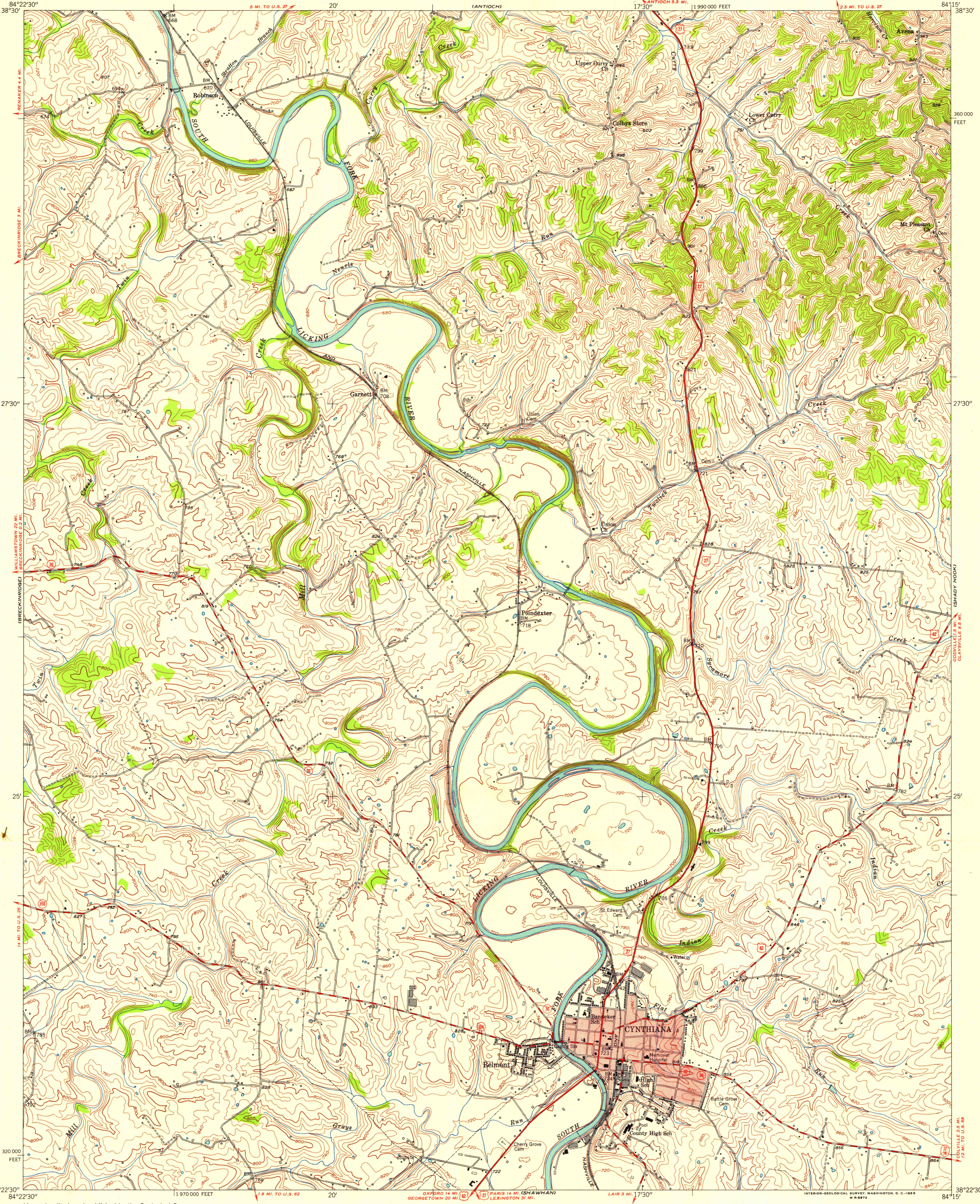


F 14 (BERRY)

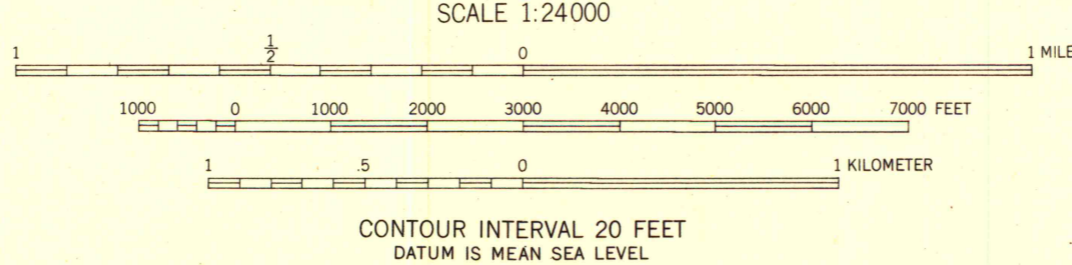
UNITED STATES
DEPARTMENT OF THE INTERIOR
GEOLOGICAL SURVEY

STATE OF KENTUCKY
AGRICULTURAL AND INDUSTRIAL DEVELOPMENT BOARD

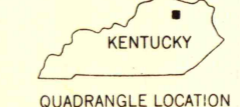
CYNTHIANA QUADRANGLE
KENTUCKY—HARRISON CO.
7.5 MINUTE SERIES (TOPOGRAPHIC)
NE 1/4 CYNTHIANA 15' QUADRANGLE



Maped, edited, and published by the Geological Survey
Control by USGS and USC&GS
Topography from aerial photographs by multiplex methods
Aerial photographs taken 1952. Field check 1953
Polyconic projection. 1927 North American datum
10,000-foot grid based on Kentucky coordinate system,
north zone
Red tint indicates area in which only
landmark buildings are shown



ROAD CLASSIFICATION
Heavy-duty 4 LANE 10 LANE Light-duty
Medium-duty 4 LANE 6 LANE Unimproved dirt
U. S. Route State Route



THIS MAP COMPLIES WITH NATIONAL MAP ACCURACY STANDARDS
FOR SALE BY U. S. GEOLOGICAL SURVEY, WASHINGTON 25, D. C.
AND KENTUCKY AGRICULTURAL AND INDUSTRIAL DEVELOPMENT BOARD, FRANKFORT, KENTUCKY
A FOLDER DESCRIBING TOPOGRAPHIC MAPS AND SYMBOLS IS AVAILABLE ON REQUEST

CYNTHIANA, KY.
NE 1/4 CYNTHIANA 15' QUADRANGLE
N3822.5—W8415/7.5
UNIVERSITY OF WISCONSIN
Department of Geography
1953