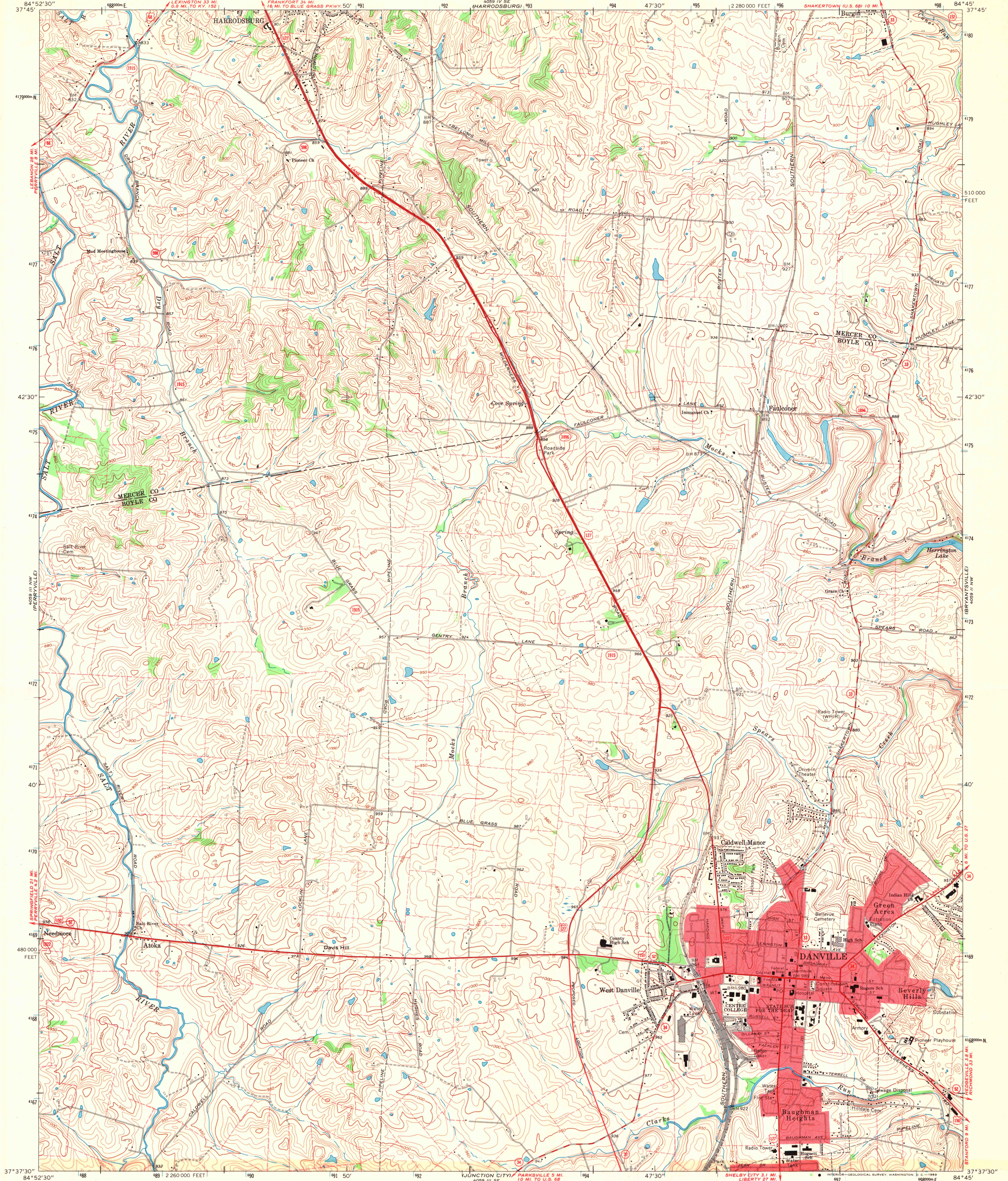


UNITED STATES  
DEPARTMENT OF THE INTERIOR  
GEOLOGICAL SURVEY

STATE OF KENTUCKY  
KENTUCKY GEOLOGICAL SURVEY  
UNIVERSITY OF KENTUCKY

DANVILLE QUADRANGLE  
KENTUCKY  
7.5 MINUTE SERIES (TOPOGRAPHIC)  
NE 4 DANVILLE 15' QUADRANGLE



Mapped, edited, and published by the Geological Survey  
Control by USGS and USC&GS  
Topography by photogrammetric methods from aerial photographs  
taken 1950. Field checked 1952. Revised from aerial  
photographs taken 1967. Field checked 1967  
Polyconic projection. 1927 North American datum  
10,000-foot grid based on Kentucky coordinate system, south zone  
1000-meter Universal Transverse Mercator grid ticks, zone 16,  
shown in blue  
Fine red dashed lines indicate selected fence and field lines where  
generally visible on aerial photographs. This information is unchecked  
Red tint indicates areas in which only landmark buildings are shown

UTM GRID AND 1967 MAGNETIC NORTH  
DECLINATION AT CENTER OF SHEET

SCALE 1:24,000  
CONTOUR INTERVAL 10 FEET  
DATUM IS MEAN SEA LEVEL

ROAD CLASSIFICATION  
Primary highway, all weather, Light-duty road, all weather,  
hard surface improved surface  
Secondary highway, all weather, Unimproved road, fair or dry  
hard surface weather  
U. S. Route State Route

THIS MAP COMPLIES WITH NATIONAL MAP ACCURACY STANDARDS  
FOR SALE BY U. S. GEOLOGICAL SURVEY, WASHINGTON, D. C. 20242,  
KENTUCKY GEOLOGICAL SURVEY, LEXINGTON, KENTUCKY 40506,  
AND KENTUCKY DEPARTMENT OF COMMERCE, FRANKFORT, KENTUCKY 40601  
A FOLDER DESCRIBING TOPOGRAPHIC MAPS AND SYMBOLS IS AVAILABLE ON REQUEST

KENTUCKY  
QUADRANGLE LOCATION  
MAP AND AIR PHOTO LIBRARY  
MAR 14 1970  
University of Wisconsin

DANVILLE, KY.  
NE 4 DANVILLE 15' QUADRANGLE  
N3737.5-W8445.7/5  
1967  
AMS 4059 III NE-SERIES V853