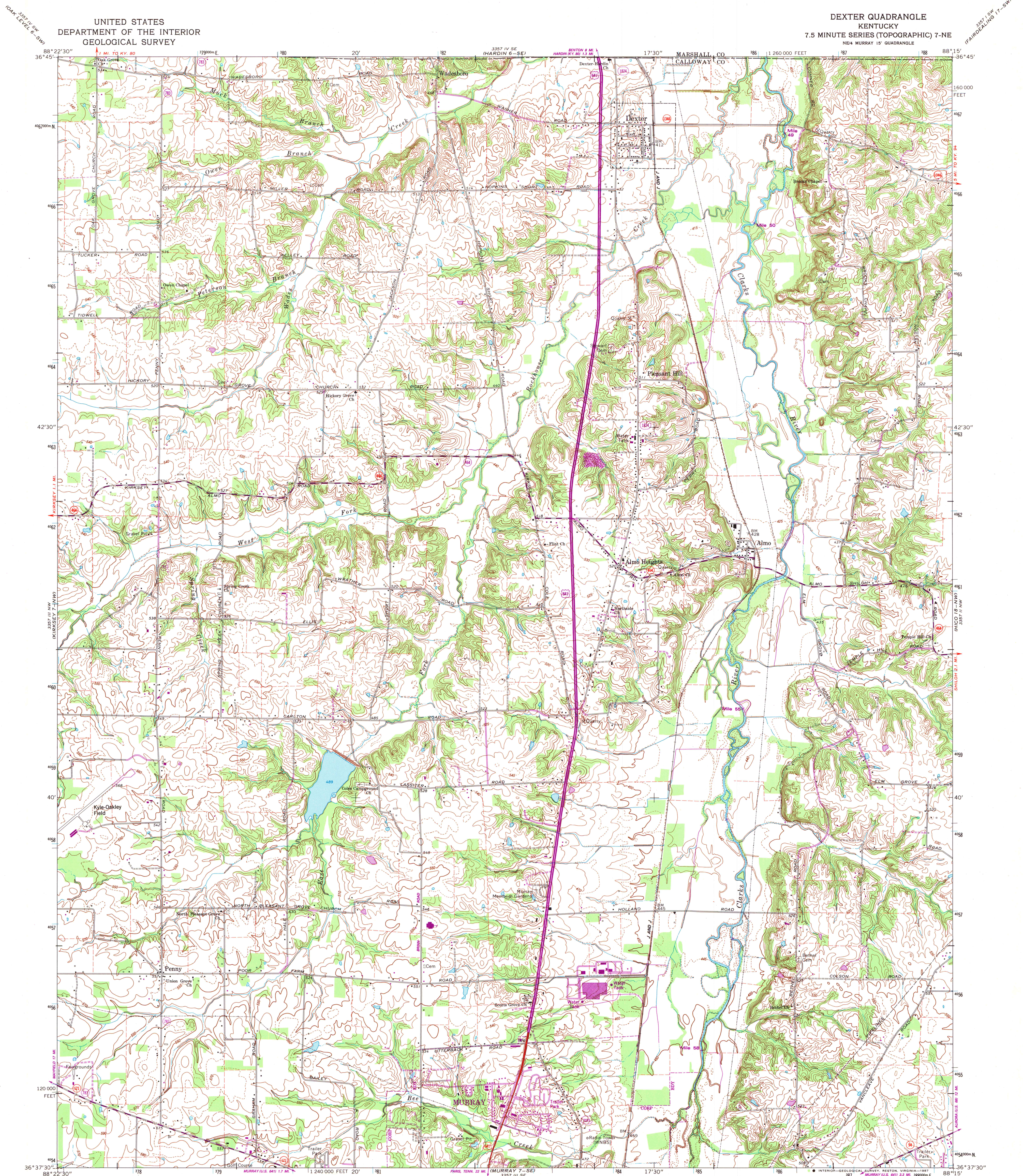


UNITED STATES  
DEPARTMENT OF THE INTERIOR  
GEOLOGICAL SURVEY

DEXTER QUADRANGLE  
KENTUCKY  
7.5 MINUTE SERIES (TOPOGRAPHIC) 7-NE  
NE/4 MURRAY 15' QUADRANGLE

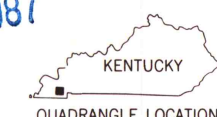


Mapped by the Tennessee Valley Authority  
Edited and published by the Geological Survey  
Revised by the Geological Survey in cooperation with  
Kentucky Geological Survey  
Control by USGS, NOS/NOAA, and TVA  
Topography by photogrammetric methods from aerial photographs  
taken 1948 and 1949. Field checked 1951. Revised from aerial  
photographs taken 1968. Field checked 1969  
Polyconic projection. 10,000-foot grid ticks based on  
Kentucky coordinate system, south zone  
1000-meter Universal Transverse Mercator grid ticks,  
zone 16, shown in blue. 1927 North American Datum  
To place on the predicted North American Datum 1983  
now the projection lines 5 meters south and  
4 meters east as shown by dashed corner ticks  
Fine red dashed lines indicate selected fence and field lines where  
generally visible on aerial photographs. This information is unchecked

Revisions shown in purple and woodland compiled by  
the Tennessee Valley Authority from aerial photographs  
taken 1981 and other sources. Contours adjusted  
adjacent to certain photorevised hydrographic features.  
This information not field checked. Map edited 1986

SCALE 1:24,000  
1 000 2000 3000 4000 5000 6000 7000 FEET  
1 2 3 4 5 6 7 8 9 10 KILOMETER  
CONTOUR INTERVAL 10 FEET  
DOTTED LINES REPRESENT 5-FOOT CONTOURS  
NATIONAL GEODETIC VERTICAL DATUM OF 1929  
THIS MAP COMPLIES WITH NATIONAL MAP ACCURACY STANDARDS  
FOR SALE BY U.S. GEOLOGICAL SURVEY  
DENVER, COLORADO 80225, OR RESTON, VIRGINIA 22082  
KENTUCKY GEOLOGICAL SURVEY, LEXINGTON, KENTUCKY 40506  
KENTUCKY DEPARTMENT OF COMMERCE, FRANKFORT, KENTUCKY 40601  
AND U.S. TENNESSEE VALLEY AUTHORITY  
CHATTANOOGA, TENN. 37401 OR KNOXVILLE, TENN. 37902  
A FOLDER DESCRIBING TOPOGRAPHIC MAPS AND SYMBOLS IS AVAILABLE ON REQUEST

JUN 10 1987



U.S. Regional  
Depository Copy  
DO NOT DISCARD

ARTHUR H. ROBINSON MAP LIBRARY  
University of Wisconsin-Madison

ROAD CLASSIFICATION  
Primary highway, all weather, hard surface  
Secondary highway, all weather, hard surface  
Light-duty road, all weather, improved surface  
Unimproved road, fair or dry weather  
Interstate Route  
U.S. Route  
State Route

DEXTER, KY.  
NE/4 MURRAY 15' QUADRANGLE  
36088-F3-TF-024

1969  
PHOTOREVISED 1986  
DMA 3357 III NE-SERIES 1985