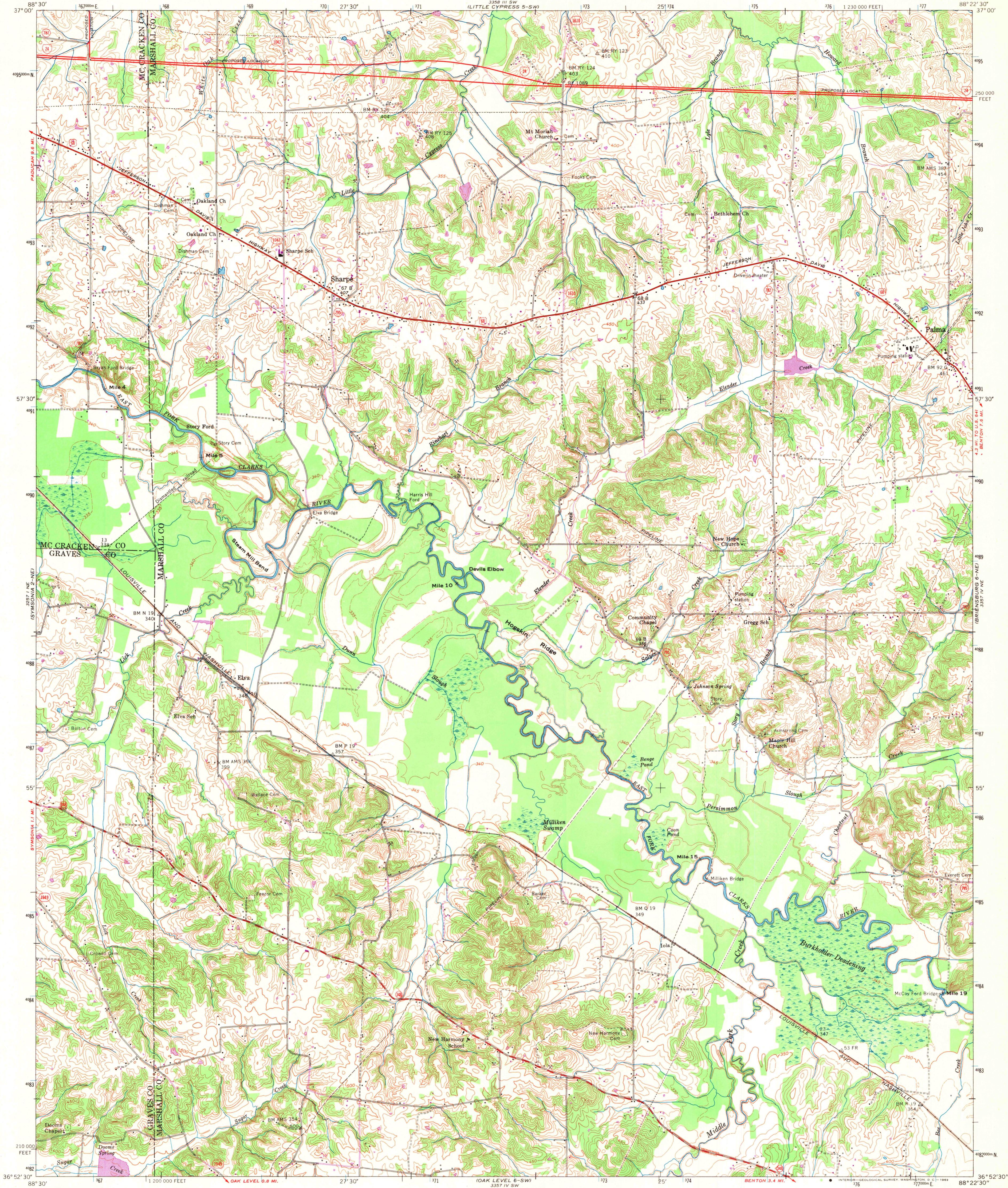


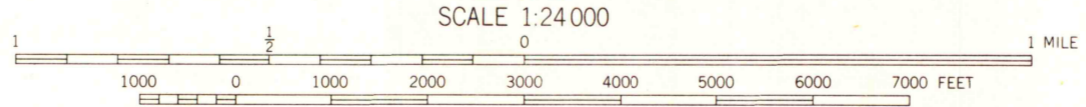
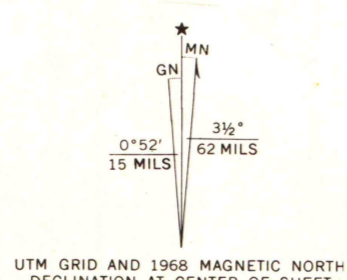
UNITED STATES
DEPARTMENT OF THE INTERIOR
GEOLOGICAL SURVEY

ELVA QUADRANGLE
KENTUCKY
7.5 MINUTE SERIES (TOPOGRAPHIC) 6-NW
NW/4 BENTON 15' QUADRANGLE



Mapped and edited by the Tennessee Valley Authority
Published by the Geological Survey
Control by USC&GS, USGS, and Tennessee Valley Authority
Topography by photogrammetric methods from aerial
photographs taken 1948. Field checked 1951
Polyconic projection. 1927 North American datum
10,000-foot grid based on Kentucky coordinate system,
south zone
1000-meter Universal Transverse Mercator grid ticks,
zone 16, shown in blue

Revisions shown in purple compiled by Geological Survey in
cooperation with State of Kentucky agencies, from aerial
photographs taken 1968. This information not field checked



CONTOUR INTERVAL 10 FEET
DASHED LINES REPRESENT HALF-INTERVAL CONTOURS
DATUM IS MEAN SEA LEVEL
THIS MAP COMPLIES WITH NATIONAL MAP ACCURACY STANDARDS
FOR SALE BY U. S. GEOLOGICAL SURVEY, WASHINGTON, D. C. 20242.
KENTUCKY GEOLOGICAL SURVEY, LEXINGTON, KENTUCKY 40506.
KENTUCKY DEPARTMENT OF COMMERCE, FRANKFORT, KENTUCKY 40601
AND BY U. S. TENNESSEE VALLEY AUTHORITY,
CHATTANOOGA, TENN. 37401 OR KNOXVILLE, TENN. 37902
A FOLDER DESCRIBING TOPOGRAPHIC MAPS AND SYMBOLS IS AVAILABLE ON REQUEST



ROAD CLASSIFICATION

HARD SURFACE ALL WEATHER ROADS	DRY WEATHER ROADS
Heavy-duty — 4 LANE 16 LANE	Improved dirt —
Medium-duty — 4 LANE 16 LANE	Unimproved dirt —
Loose-surface, graded, or narrow hard-surface	-----
Interstate Route	U.S. Route
State Route	

ELVA, KY.
NW/4 BENTON 15' QUADRANGLE
N3652.5-W8822.5/7.5
1951
PHOTOREVISED 1968
AMS 3357 IV NW-SERIES V853

MAP AND AIR PHOTO LIBRARY
University of Wisconsin