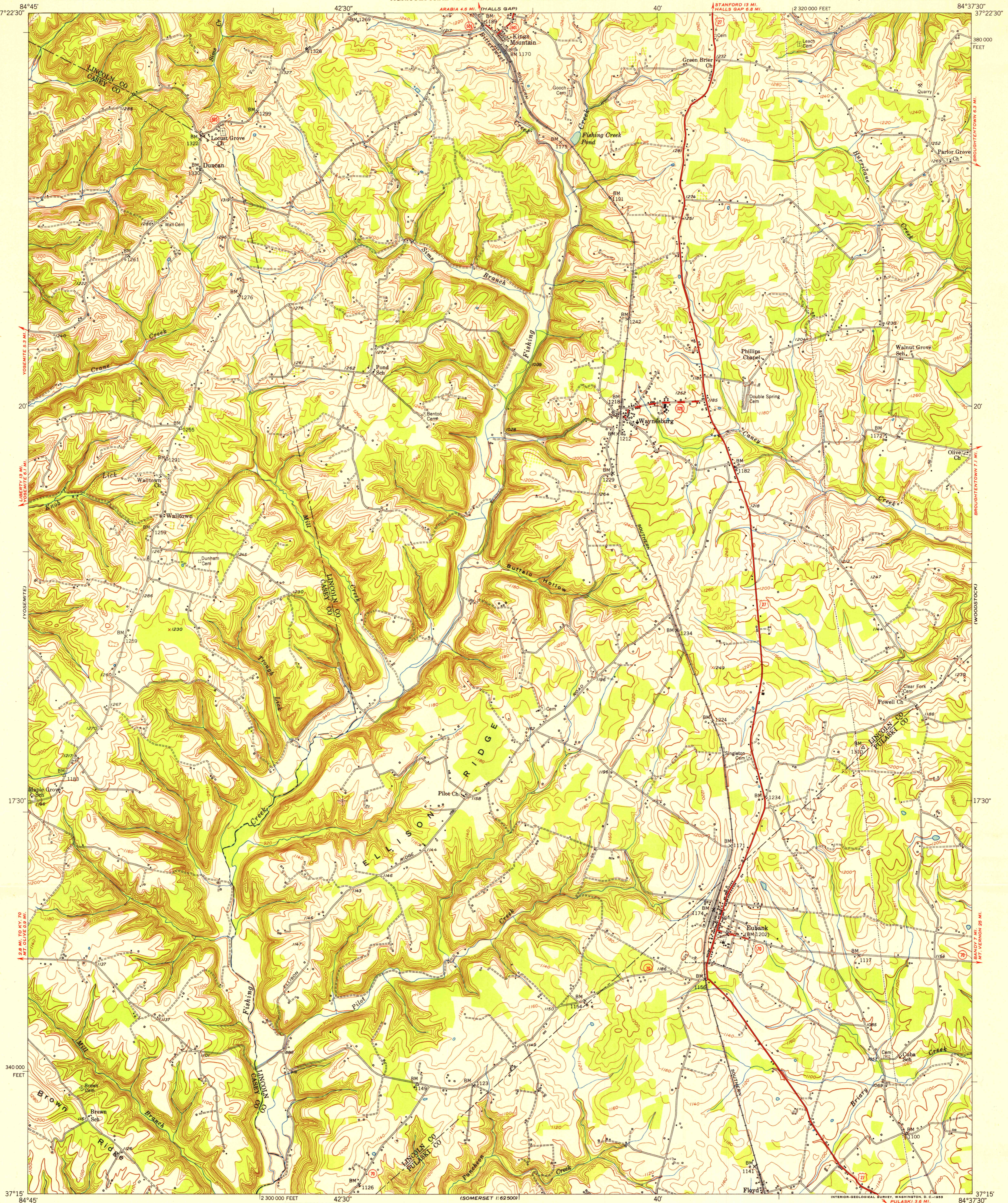
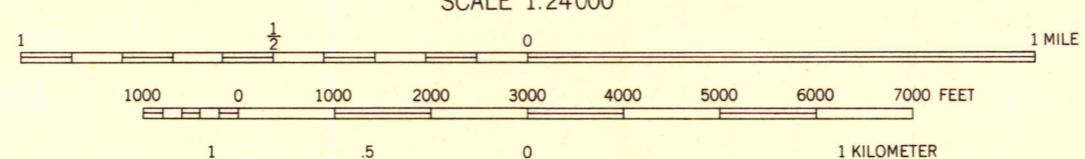


011



Maped, edited, and published by the Geological Survey  
Control by USGS and USC&GS  
Topography from aerial photographs by multiplex methods  
Aerial photographs taken 1950. Field check 1952  
Polyconic projection. 1927 North American datum  
10,000-foot grid based on Kentucky coordinate system,  
south zone

TRUE NORTH  
MAGNETIC NORTH  
APPROXIMATE MEAN  
DECLINATION, 1952



ROAD CLASSIFICATION  
Heavy-duty 4 LANE 6 LANE Light-duty  
Medium-duty 4 LANE 6 LANE Unimproved dirt  
U. S. Route State Route



EUBANK, KY.  
SW/4 CRAB ORCHARD 15' QUADRANGLE  
N3715-W8437.5/7.5

THIS MAP COMPLIES WITH NATIONAL MAP ACCURACY STANDARDS  
FOR SALE BY U. S. GEOLOGICAL SURVEY, WASHINGTON 25, D. C.  
AND KENTUCKY AGRICULTURAL AND INDUSTRIAL DEVELOPMENT BOARD, FRANKFORT, KENTUCKY  
A FOLDER DESCRIBING TOPOGRAPHIC MAPS AND SYMBOLS IS AVAILABLE ON REQUEST

1952 UNIVERSITY OF WISCONSIN  
Department of Geography