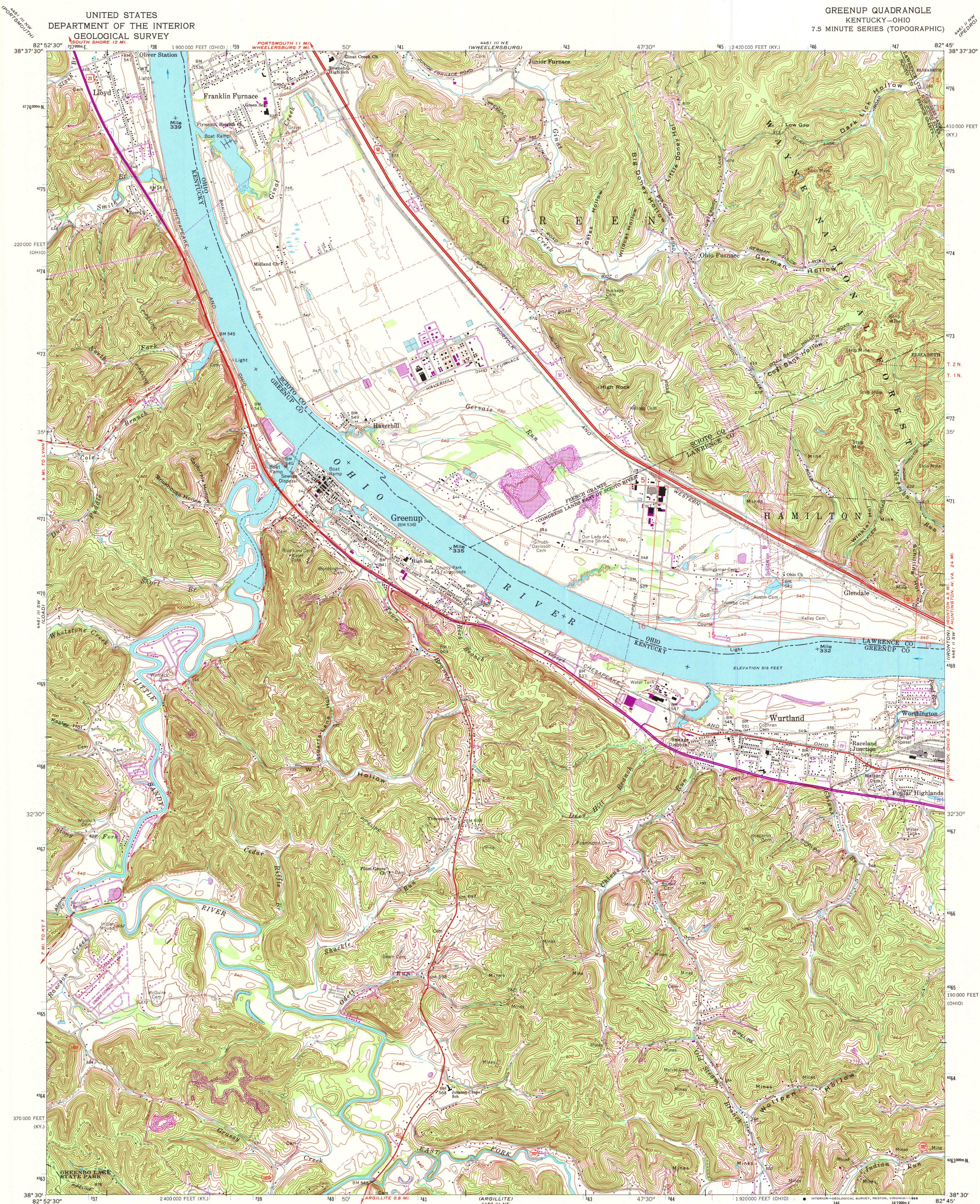
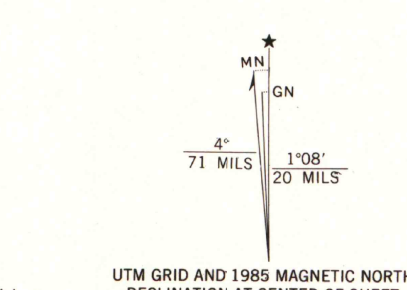


UNITED STATES
DEPARTMENT OF THE INTERIOR
GEOLOGICAL SURVEY

GREENUP QUADRANGLE
KENTUCKY-OHIO
7.5 MINUTE SERIES (TOPOGRAPHIC)

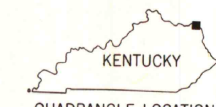


Mapped, edited, and published by the Geological Survey in cooperation with Kentucky Geological Survey and State of Ohio agencies
Control by USGS, USC&GS, USCE, and Tennessee Valley Authority
Topography in Kentucky by photogrammetric methods from aerial photographs taken 1952. Field checked 1953
Topography in Ohio by photogrammetric methods from aerial photographs taken 1960. Field checked 1961
Revised from aerial photographs taken 1971. Field checked 1972
Polyconic projection. 1927 North American datum
10,000-foot grids based on Kentucky coordinate system, north zone and Ohio coordinate system, south zone
1000-meter Universal Transverse Mercator grid ticks, zone 17, shown in blue
There may be private inholdings within the boundaries of the National or State reservations shown on this map
The state boundary as shown represents the approximate position of the low waterline as determined from U. S. Corps of Engineers Ohio River charts, surveyed 1914, and supplementary information
Land lines based on the Ohio River Base



SCALE 1:24,000
CONTOUR INTERVAL 20 FEET
DOTTED LINES REPRESENT 10-FOOT CONTOURS
NATIONAL GEODETIC VERTICAL DATUM OF 1929

THIS MAP COMPLIES WITH NATIONAL MAP ACCURACY STANDARDS
FOR SALE BY U. S. GEOLOGICAL SURVEY, RESTON, VIRGINIA 22092
KENTUCKY GEOLOGICAL SURVEY, LEXINGTON, KENTUCKY 40506,
AND KENTUCKY DEPARTMENT OF COMMERCE, FRANKFORT, KENTUCKY 40601
A FOLDER DESCRIBING TOPOGRAPHIC MAPS AND SYMBOLS IS AVAILABLE ON REQUEST



ROAD CLASSIFICATION
Primary highway, hard surface
Secondary highway, hard surface
Light-duty road, hard or improved surface
Unimproved road
Interstate Route
U. S. Route
State Route

GREENUP, KY.-OHIO

38082-E7-TF-024

1972
PHOTOREVISED 1985
DMA 4461 III SE-SERIES 1985

U.S. Regional
Depository Copy
DO NOT DISCARD

U.S. ROBINSON
MAP LIBRARY

DEC 20 1985

University of Wisconsin
Madison