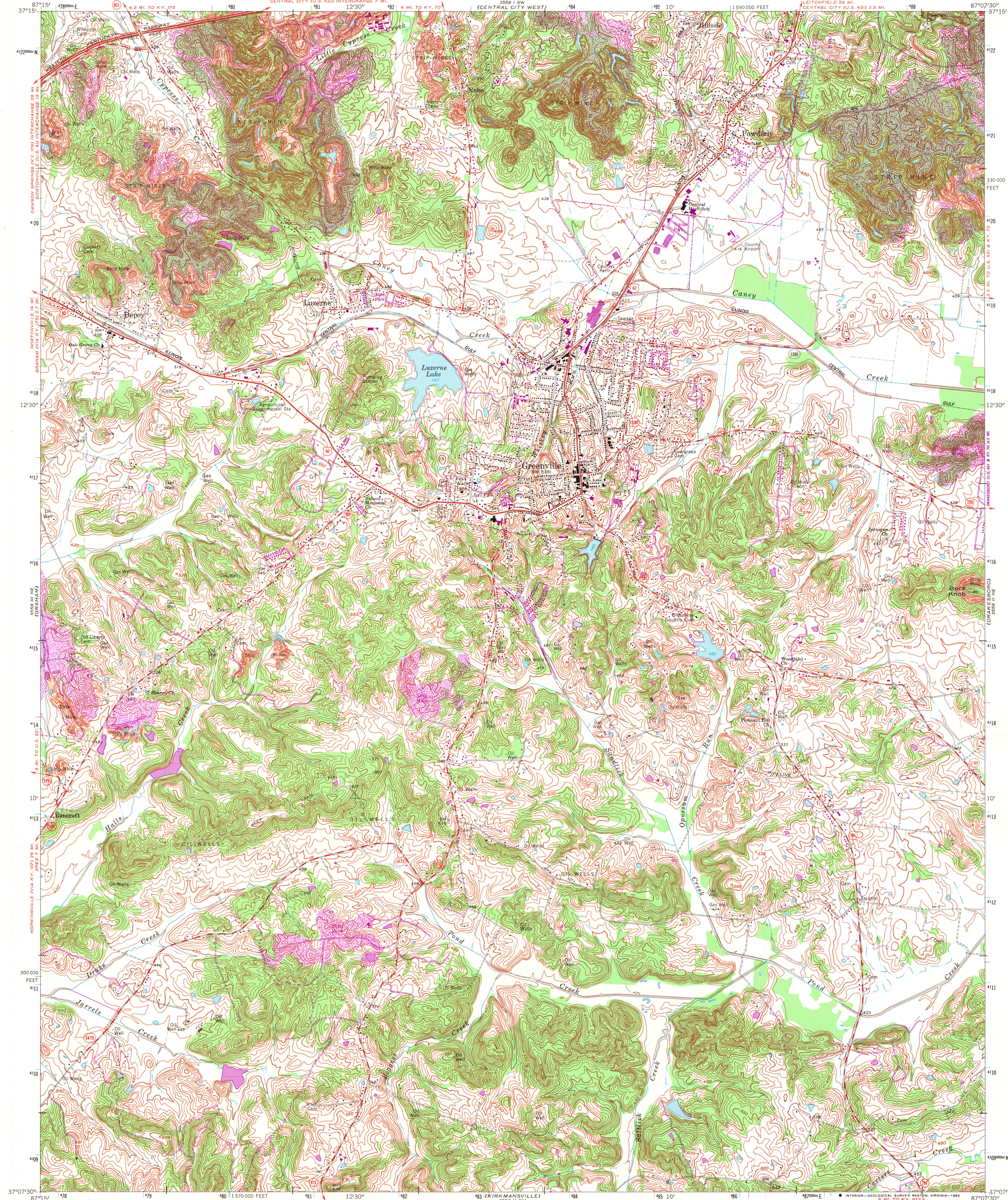


UNITED STATES
DEPARTMENT OF THE INTERIOR
GEOLOGICAL SURVEY

STATE OF KENTUCKY
KENTUCKY GEOLOGICAL SURVEY
UNIVERSITY OF KENTUCKY

GREENVILLE QUADRANGLE
KENTUCKY-MUHLENBERG CO.
7.5 MINUTE SERIES (TOPOGRAPHIC)
NW/4 DRAKESBORO 15' QUADRANGLE

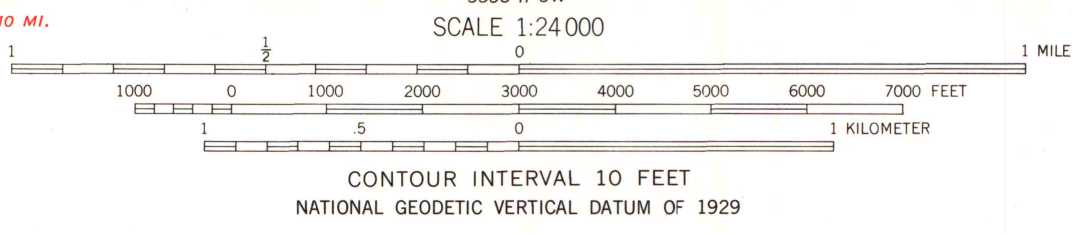
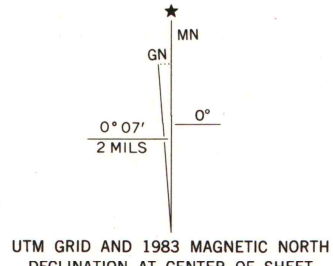


Maped, edited, and published by the Geological Survey
Control by USGS and NOS/NOAA

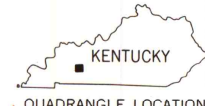
Topography by photogrammetric methods from aerial photographs
taken 1951. Field checked 1952. Revised 1963
Polyconic projection. 10,000-foot grid ticks based on Kentucky
coordinate system, south zone. 1000-meter Universal Transverse
Mercator grid ticks, zone 16, shown in blue
1927 North American Datum

To place on the predicted North American Datum 1983 move
the projection lines 4 meters south and 1 meter east as shown
by dashed corner ticks
Fine red dashed lines indicate selected fence and field lines where
generally visible on aerial photographs. This information is unchecked

Revisions shown in purple and woodland compiled cooperation
with State of Kentucky agencies from aerial photographs taken
1981 and other sources. Contours adjusted adjacent to certain
photorevised hydrographic features. This information not field
checked. Map edited 1983



THIS MAP COMPLIES WITH NATIONAL MAP ACCURACY STANDARDS
FOR SALE BY U.S. GEOLOGICAL SURVEY, RESTON, VIRGINIA 22092,
KENTUCKY GEOLOGICAL SURVEY, LEXINGTON, KENTUCKY 40506,
AND KENTUCKY DEPARTMENT OF COMMERCE, FRANKFORT, KENTUCKY 40601
A FOLDER DESCRIBING TOPOGRAPHIC MAPS AND SYMBOLS IS AVAILABLE ON REQUEST



ROAD CLASSIFICATION	
Heavy-duty	Light-duty
Medium-duty	Unimproved dirt
U.S. Route	State Route

APR 2 1984
UNIVERSITY OF WISCONSIN
MADISON

GREENVILLE, KY.
NW/4 DRAKESBORO 15' QUADRANGLE
N3707.5-W8707.5/7.5

1963
PHOTOREVISED 1983
DMA 3556 II NW-SERIES V85
ARTHUR H. ROBINSON MAP LIBRARY
University of Wisconsin-Madison