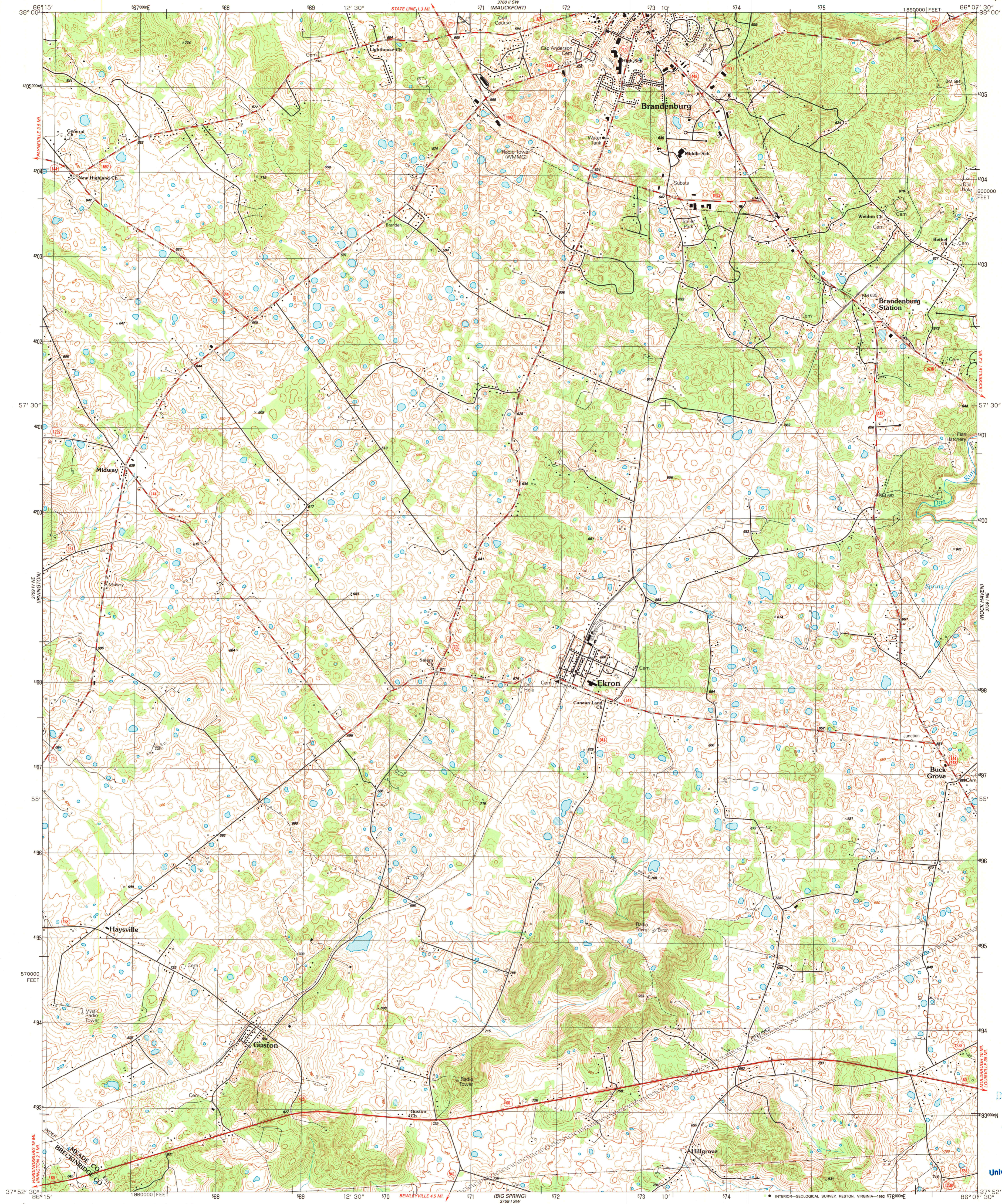


UNITED STATES
DEPARTMENT OF THE INTERIOR
GEOLOGICAL SURVEY

GUSTON QUADRANGLE
KENTUCKY
7.5 MINUTE SERIES (TOPOGRAPHIC)
NW/4 EKRON 15' QUADRANGLE



Produced by the United States Geological Survey

Control by USGS and NOS/NOAA

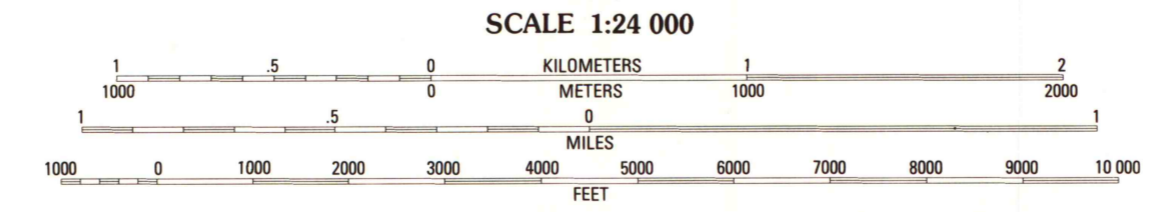
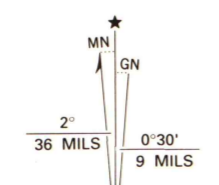
Compiled from aerial photographs taken 1987

Field checked 1988. Map edited 1991

Projection and 10,000-foot grid ticks: Kentucky coordinate system, south zone (Lambert conformal conic) 1000-meter Universal Transverse Mercator grid, zone 16 1927 North American Datum

The difference between 1927 North American Datum and North American Datum of 1983 (NAD 83) for 7.5-minute intersections is given in USGS Bulletin 1875. The NAD 83 is shown by dashed corner ticks

Fine red dashed lines indicate selected fence and field lines where generally visible on aerial photographs. This information is unchecked



CONTOUR INTERVAL 10 FEET
NATIONAL GEODETIC VERTICAL DATUM OF 1929

THIS MAP COMPLIES WITH NATIONAL MAP ACCURACY STANDARDS
FOR SALE BY U.S. GEOLOGICAL SURVEY, DENVER, COLORADO 80225, OR RESTON, VIRGINIA 22092
KENTUCKY GEOLOGICAL SURVEY, LEXINGTON, KENTUCKY 40506
AND KENTUCKY DEPARTMENT OF COMMERCE, FRANKFORT, KENTUCKY 40601
A FOLDER DESCRIBING TOPOGRAPHIC MAPS AND SYMBOLS IS AVAILABLE ON REQUEST

ROAD CLASSIFICATION

Primary highway, hard surface	Light-duty road, hard or improved surface
Secondary highway, hard surface	Unimproved road
Interstate Route	U. S. Route
	State Route



GUSTON, KY.
NW/4 EKRON 15' QUADRANGLE
3708642-T-024

1991

DMA 3759 1 NW-SERIES V853

U.S. Regional
Depository Copy
NOT DISCARD

A.H. ROBINSON
MAP LIBRARY

OCT 19 1992

University of Wisconsin
Madison