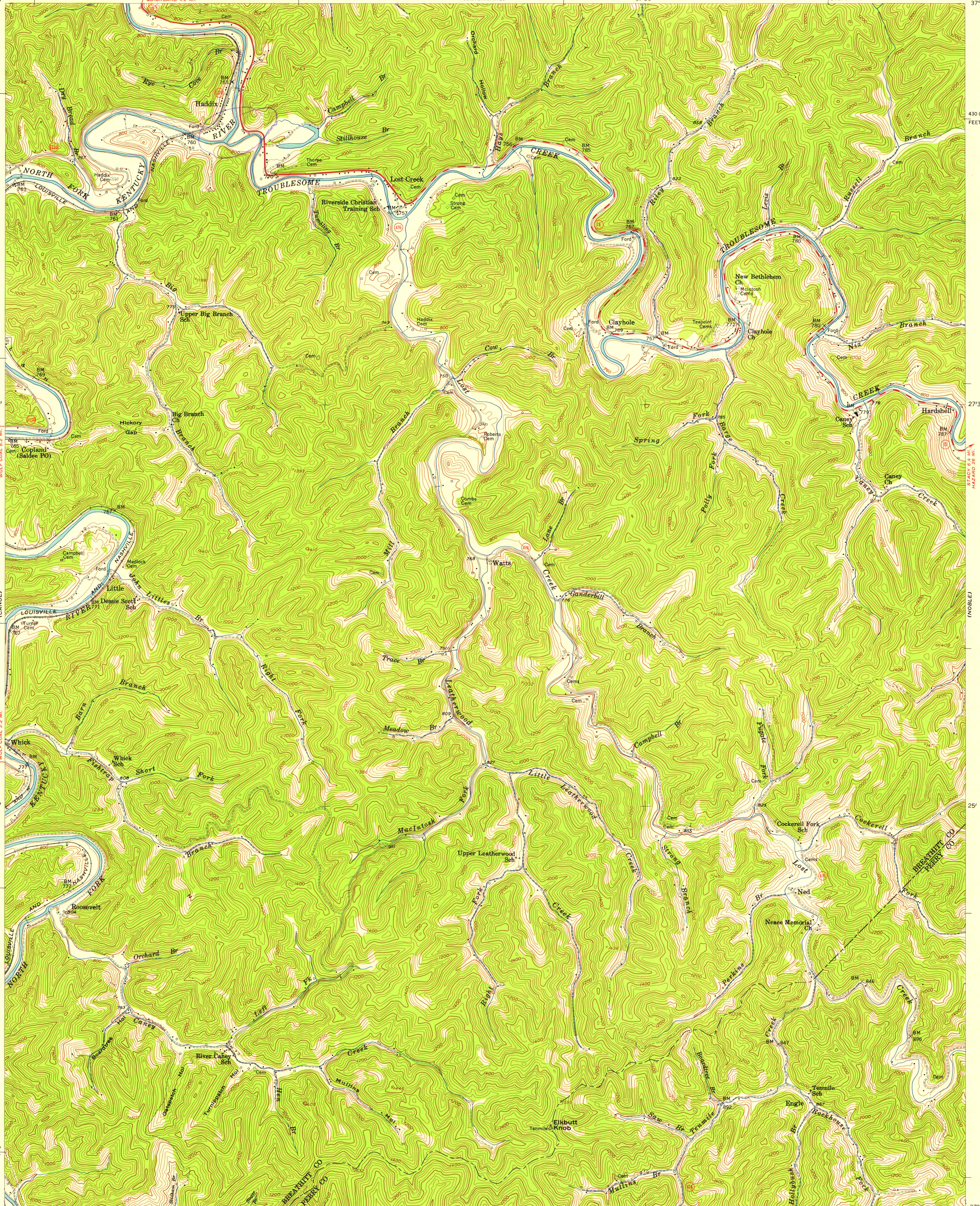


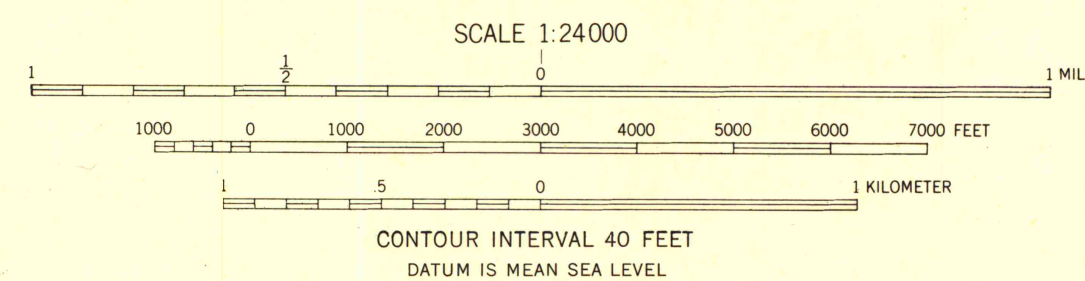
(JACKSON)

(BUCKHORN)



Mapped, edited, and published by the Geological Survey
Control by USC&GS
Topography from aerial photographs by stereoplanigraph
Aerial photographs taken 1952 and 1953. Field check 1954
Polyconic projection. 1927 North American datum
10,000-foot grid based on Kentucky coordinate system,
south zone
Unchecked elevations are shown in brown

APPROXIMATE MEAN
DECLINATION, 1954



ROAD CLASSIFICATION
Heavy-duty ——— Light-duty ———
Medium-duty ——— Unimproved dirt ———
U. S. Route State Route



THIS MAP COMPLIES WITH NATIONAL MAP ACCURACY STANDARDS
FOR SALE BY U. S. GEOLOGICAL SURVEY, WASHINGTON 25, D. C.
AND KENTUCKY AGRICULTURAL AND INDUSTRIAL DEVELOPMENT BOARD, FRANKFORT, KENTUCKY
A FOLDER DESCRIBING TOPOGRAPHIC MAPS AND SYMBOLS IS AVAILABLE ON REQUEST

HADDIX, KY.
NE 1/4 BUCKHORN 15' QUADRANGLE
N 3722.5—W 8315/7.5
1954
UNIVERSITY OF WISCONSIN
Department of Geography