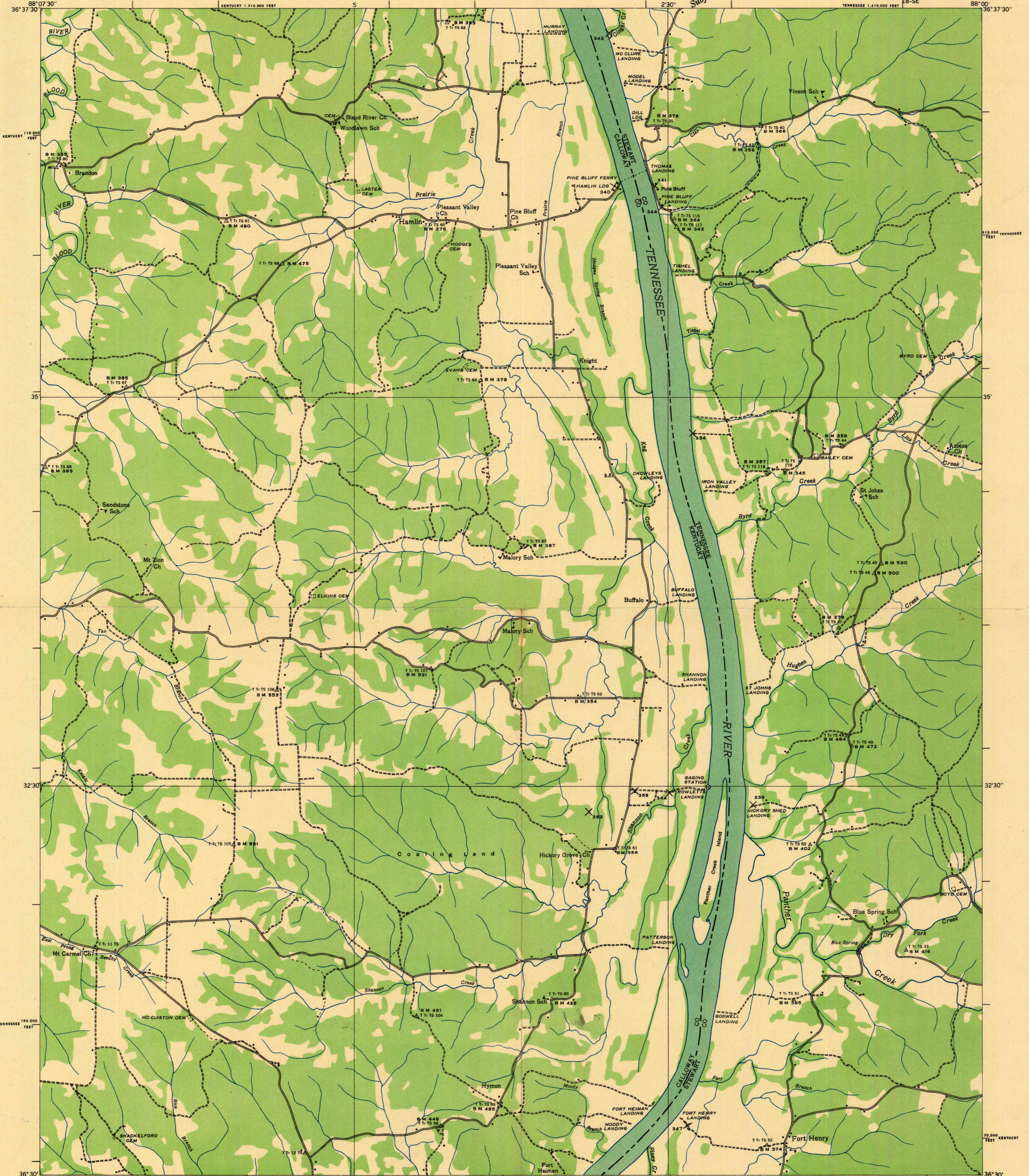
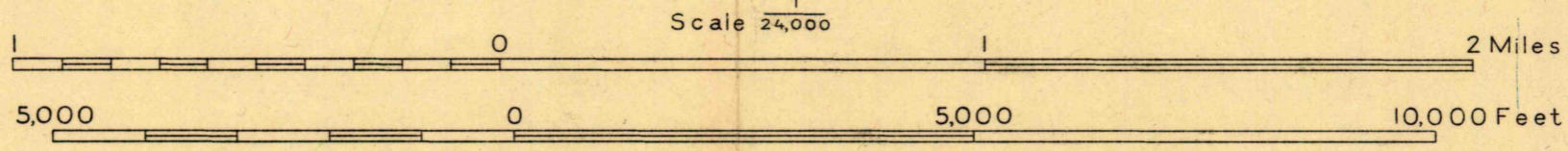


Advance sheet
Subject to correction



Albert Pike, Division Engineer
Compiled by U. S. Geological Survey from aerial photographs
Control by U. S. Geological Survey, Corps of Engineers, U. S. Army and
Tennessee Valley Authority
Field examination in 1936



Datum is mean sea level

Polyconic projection. 1927 North American datum
10,000 foot grid based on Kentucky (South) and Tennessee
rectangular coordinate systems

Trail

Probable drainage

Historical File
Topographic Division

HAMLIN, KY.-TENN.
18-SE