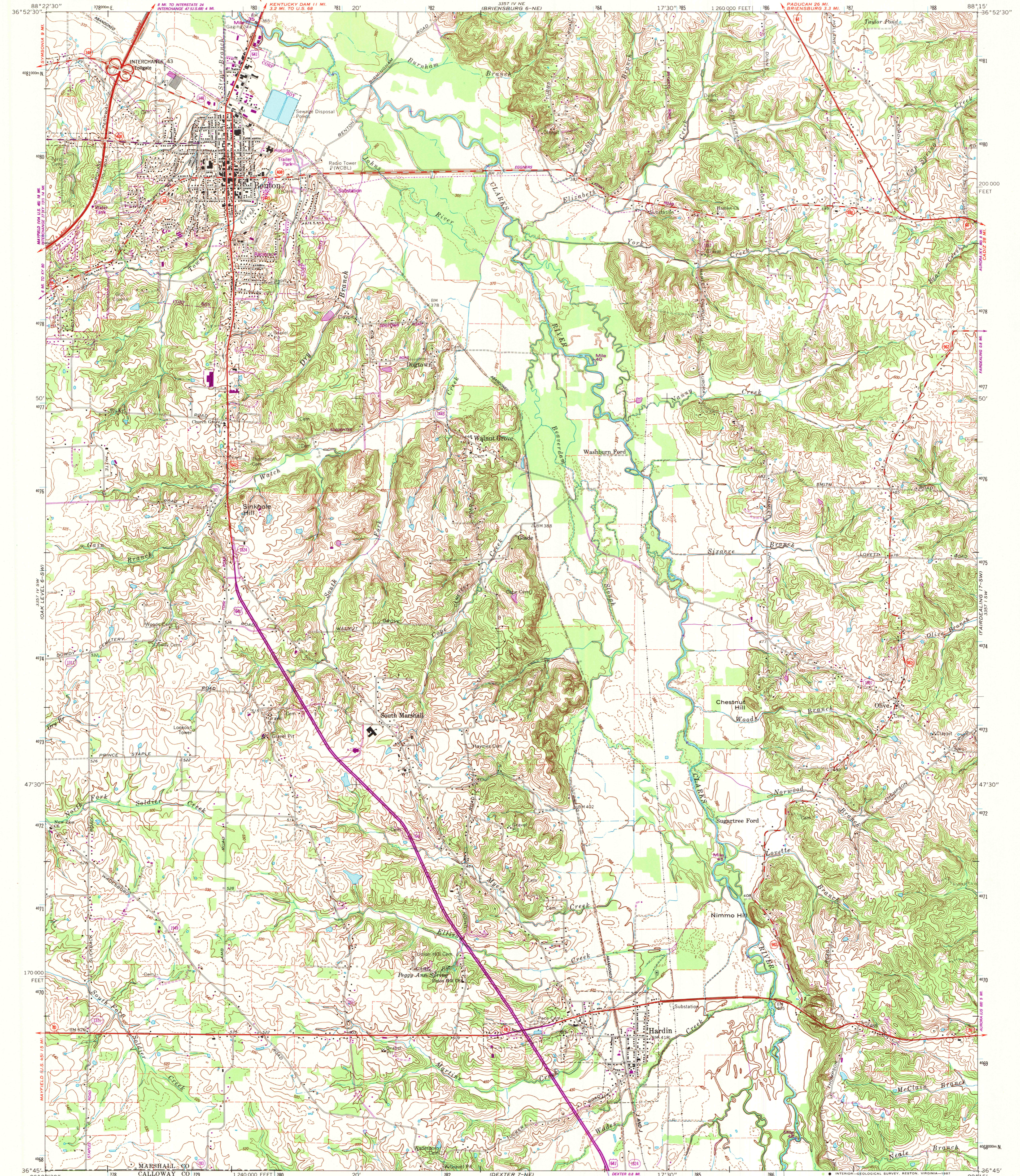


UNITED STATES
DEPARTMENT OF THE INTERIOR
GEOLOGICAL SURVEY

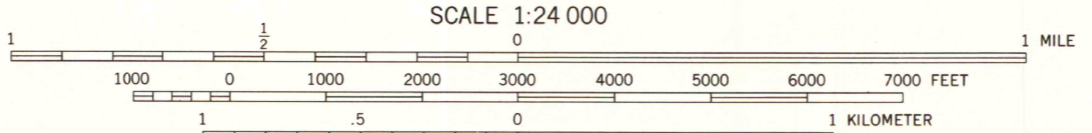
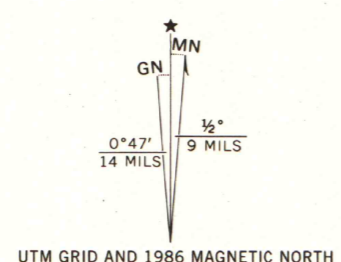
HARDIN QUADRANGLE
KENTUCKY
7.5 MINUTE SERIES (TOPOGRAPHIC) 6-SE
SE/4 BENTON 15' QUADRANGLE



Mapped by the Tennessee Valley Authority
Edited and published by the Geological Survey
Revised by the Geological Survey in cooperation
with Kentucky Geological Survey
Control by USGS, NOS/NOAA, and TVA

Topography by photogrammetric methods from aerial photographs
taken 1948. Field checked 1951. Revised from aerial
photographs taken 1968. Field checked 1969.
Polyconic projection. 10,000-foot grid ticks based on
Kentucky coordinate system, south zone
1000-meter Universal Transverse Mercator grid ticks,
zone 16, shown in blue. 1927 North American Datum
To place on the predicted North American Datum 1983
move the projection lines 5 meters south and
4 meters east as shown by dashed corner ticks
Fine red dashed lines indicate selected fence and field lines where
generally visible on aerial photographs. This information is unchecked

Revisions shown in purple and woodland compiled by the
Tennessee Valley Authority from aerial photographs taken
1981 and other sources. Contours adjusted adjacent to
certain photorevised hydrographic features. This information
not field checked. Map edited 1986



CONTOUR INTERVAL 10 FEET
DASHED LINES REPRESENT HALF INTERVAL CONTOURS
NATIONAL GEODETIC VERTICAL DATUM OF 1929
THIS MAP COMPLIES WITH NATIONAL MAP ACCURACY STANDARDS
FOR SALE BY U.S. GEOLOGICAL SURVEY
DENVER, COLORADO 80225, OR RESTON, VIRGINIA 22092
KENTUCKY GEOLOGICAL SURVEY, LEXINGTON, KENTUCKY 40506
KENTUCKY DEPARTMENT OF COMMERCE, FRANKFORT, KENTUCKY 40601
AND U.S. TENNESSEE VALLEY AUTHORITY
CHATTANOOGA, TENN. 37401 OR KNOXVILLE, TENN. 37902
A FOLDER DESCRIBING TOPOGRAPHIC MAPS AND SYMBOLS IS AVAILABLE ON REQUEST



ARTHUR H. ROBINSON MAP LIBRARY
University of Wisconsin-Madison

HARDIN, KY.
SE/4 BENTON 15' QUADRANGLE
36088-G3-TF-024

U.S. Regional
Depository Copy
DO NOT DISCARD

1969
PHOTOREVISED 1986
DMA 3357 IV SE-SERIES V853

JUN 10 1987