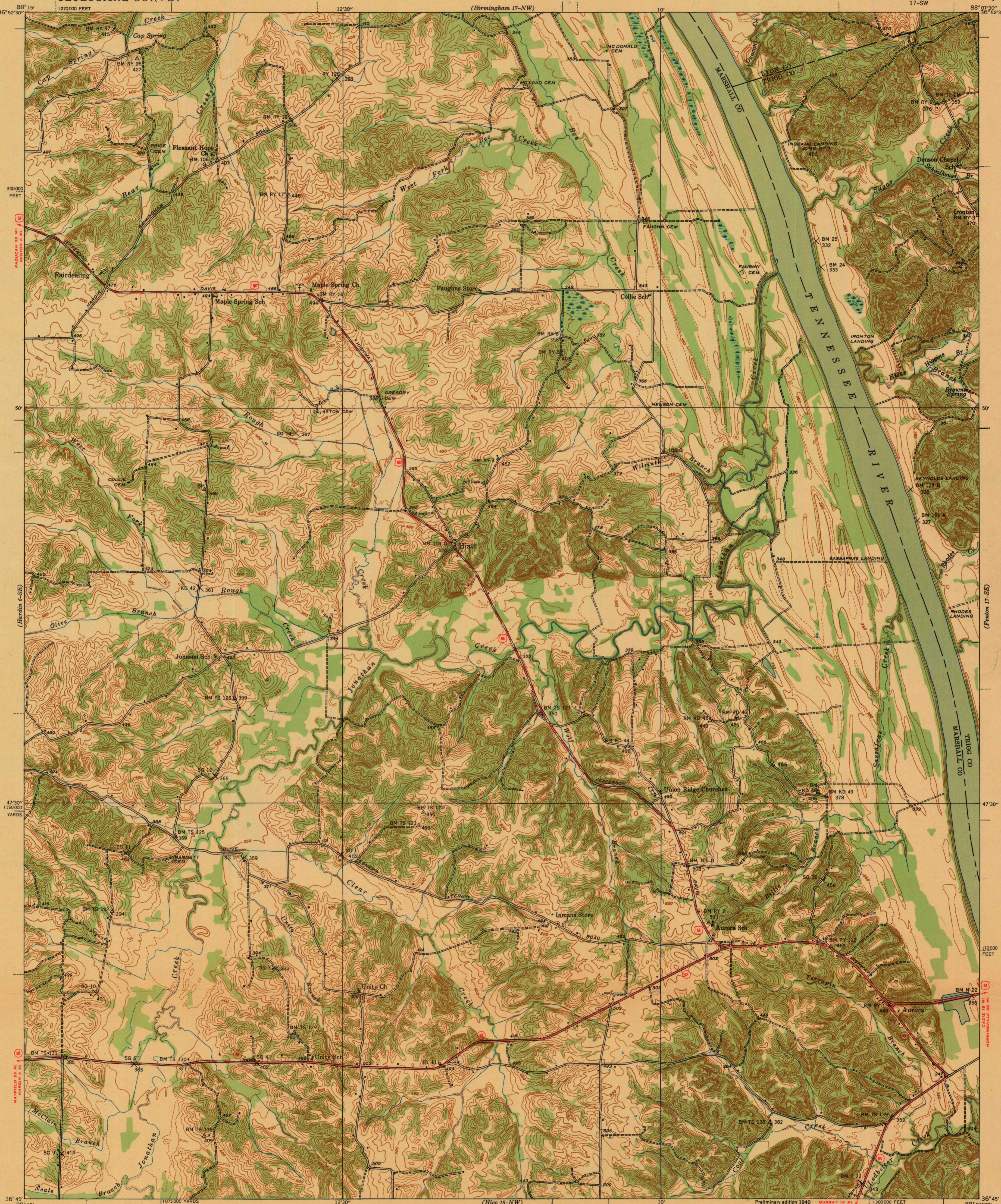


U. S. G. S.
FILE COPY
Inspection and Editing

UNITED STATES
DEPARTMENT OF THE INTERIOR
GEOLOGICAL SURVEY

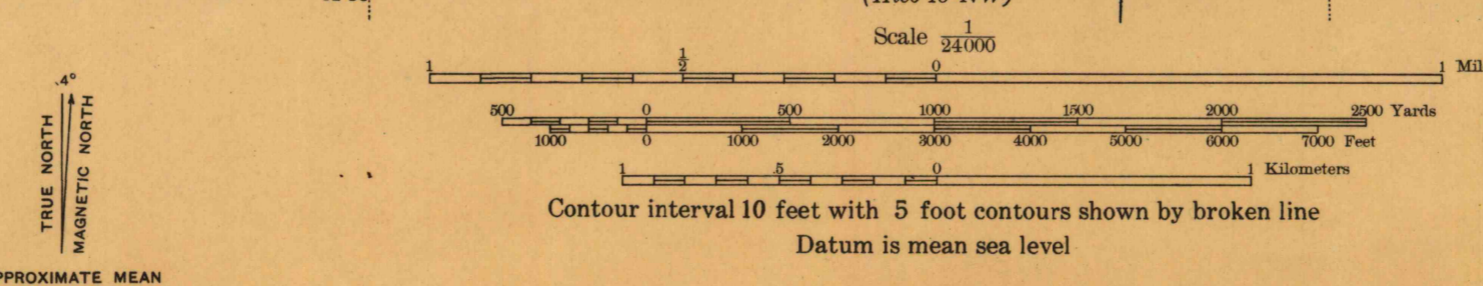
KENTUCKY
HIATT QUADRANGLE
17-SW



(Greeneburg 6-NE)
36° 52' 30"
120° 00' 00" FEET
200000 FEET
1500000 YARDS
47° 30' 00"
36° 45' 00"
(Harrison 6-SE)
(Harrison 7-NE)

(Birmingham 17-NW)
10'
88° 07' 30"
36° 52' 30"
50'
47° 30' 00"
170000 FEET
36° 45' 00"
(Harrison 17-SE)
(Harrison 18-NE)

Albert Pike, Division Engineer
Topography by Frank Lerner and C. S. Maltby
Surveyed in 1938-39



USGS
Historical File
Topographic Division

Preliminary edition 1940
MURRAY 14 N. 1
PARIS 41 N. 1
Polyconic projection. 1927 North American datum
5,000 yard grid based on U. S. zone system, C
10,000 foot grid based on Kentucky (South)
rectangular coordinate system

Name changed to Fairdealing
HIATT, KY.
17-SW
Edition of 1940

ROUTES USUALLY TRAVELED
HARD IMPERVIOUS SURFACE
OTHER SURFACE IMPROVEMENTS
1940
② U. S. ROUTE
③ STATE ROUTE
N 3645-W 8807.5/7.5

U. S. G. S.
FILE COPY
Inspection and Editing