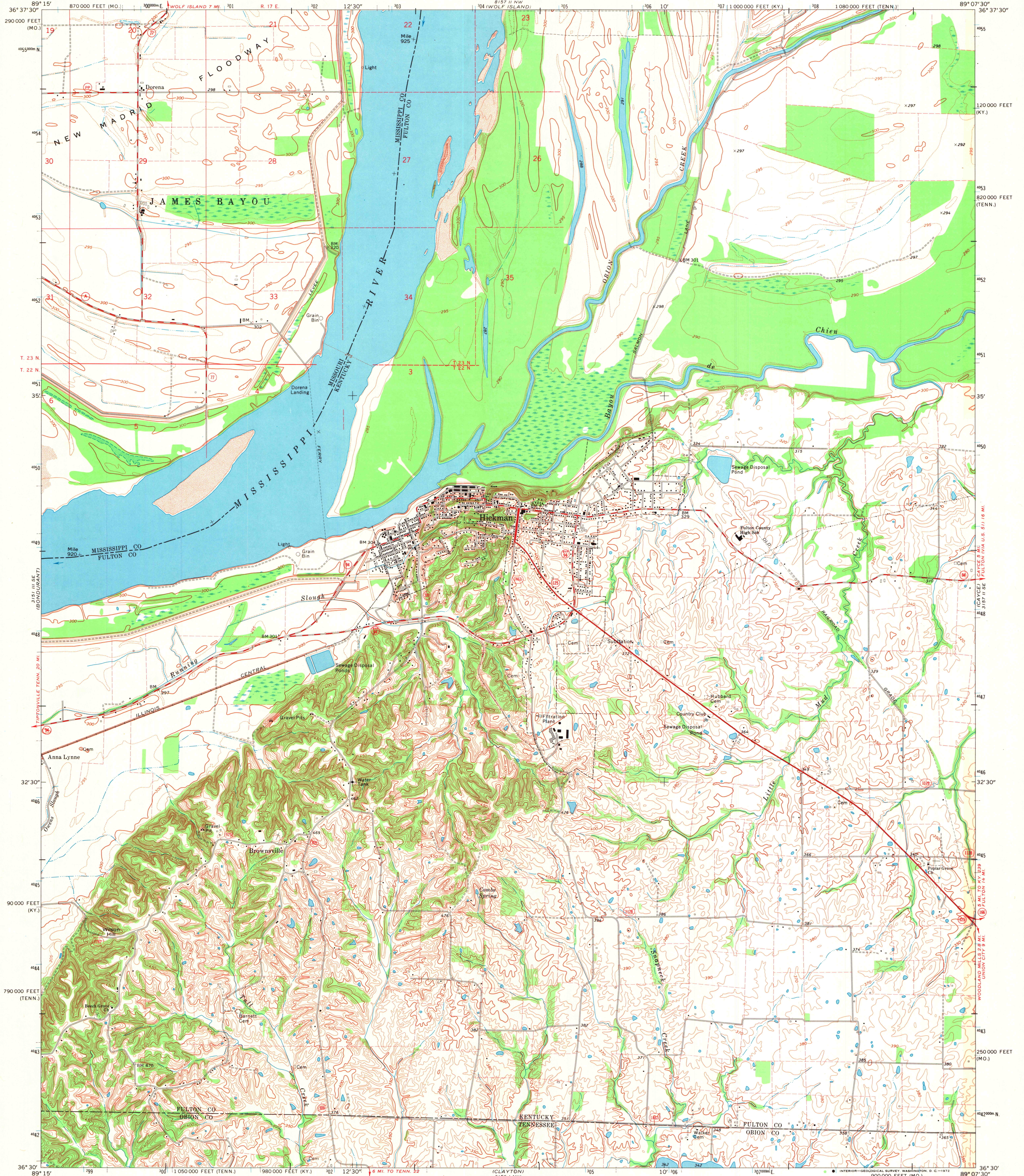


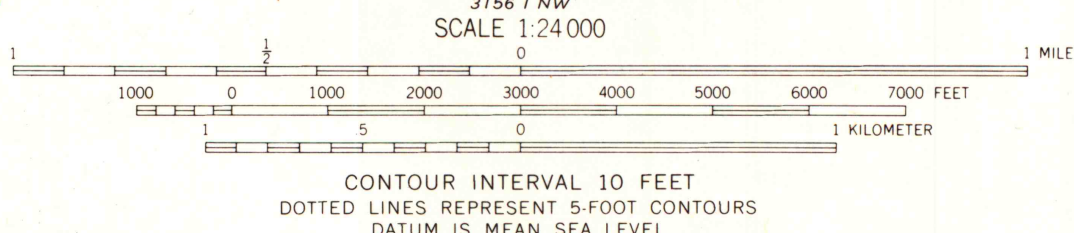
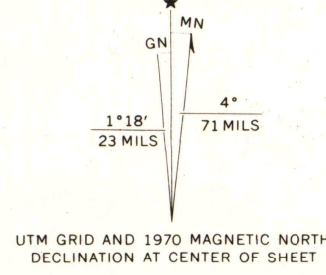
UNITED STATES
DEPARTMENT OF THE INTERIOR
GEOLOGICAL SURVEY

HICKMAN QUADRANGLE
KENTUCKY-MISSOURI-TENNESSEE
7.5 MINUTE SERIES (TOPOGRAPHIC)
SW/4 HICKMAN 15' QUADRANGLE



Mapped, edited, and published by the Geological Survey
in cooperation with the State of Kentucky

Control by USGS and USC&GS
Planimetry by photogrammetric methods from aerial photographs
taken 1950. Topography by planetable surveys 1951
and Corps of Engineers surveys 1939
Revised from aerial photographs taken 1969. Field checked 1970
Polyconic projection. 1927 North American datum
10,000-foot grids based on Kentucky coordinate system, south zone
Missouri coordinate system, east zone
and Tennessee coordinate system
1000-meter Universal Transverse Mercator grid ticks,
zone 16, shown in blue
Fine red dashed lines indicate selected fence and field lines where
generally visible on aerial photographs. This information is unchecked



THIS MAP COMPLIES WITH NATIONAL MAP ACCURACY STANDARDS
FOR SALE BY U.S. GEOLOGICAL SURVEY, DENVER, COLORADO 80225, OR WASHINGTON, D.C. 20242.
KENTUCKY GEOLOGICAL SURVEY, LEXINGTON, KENTUCKY 40506,
KENTUCKY DEPARTMENT OF COMMERCE, FRANKFORT, KENTUCKY 40601,
MISSOURI GEOLOGICAL SURVEY, ROLLA, MISSOURI 65401,
AND TENNESSEE DIVISION OF GEOLOGY, NASHVILLE, TENNESSEE 37219
A FOLDER DESCRIBING TOPOGRAPHIC MAPS AND SYMBOLS IS AVAILABLE ON REQUEST

ROAD CLASSIFICATION
Primary highway, all weather, hard surface
Secondary highway, all weather, hard surface
Light-duty road, all weather, improved surface
Unimproved road, fair or dry weather
State Route

HICKMAN KY-MO-TENN.
SW/4 HICKMAN 15' QUADRANGLE
N 3630-W 8907.5/7.5
1970
AMS 3157 II SW-SERIES V853