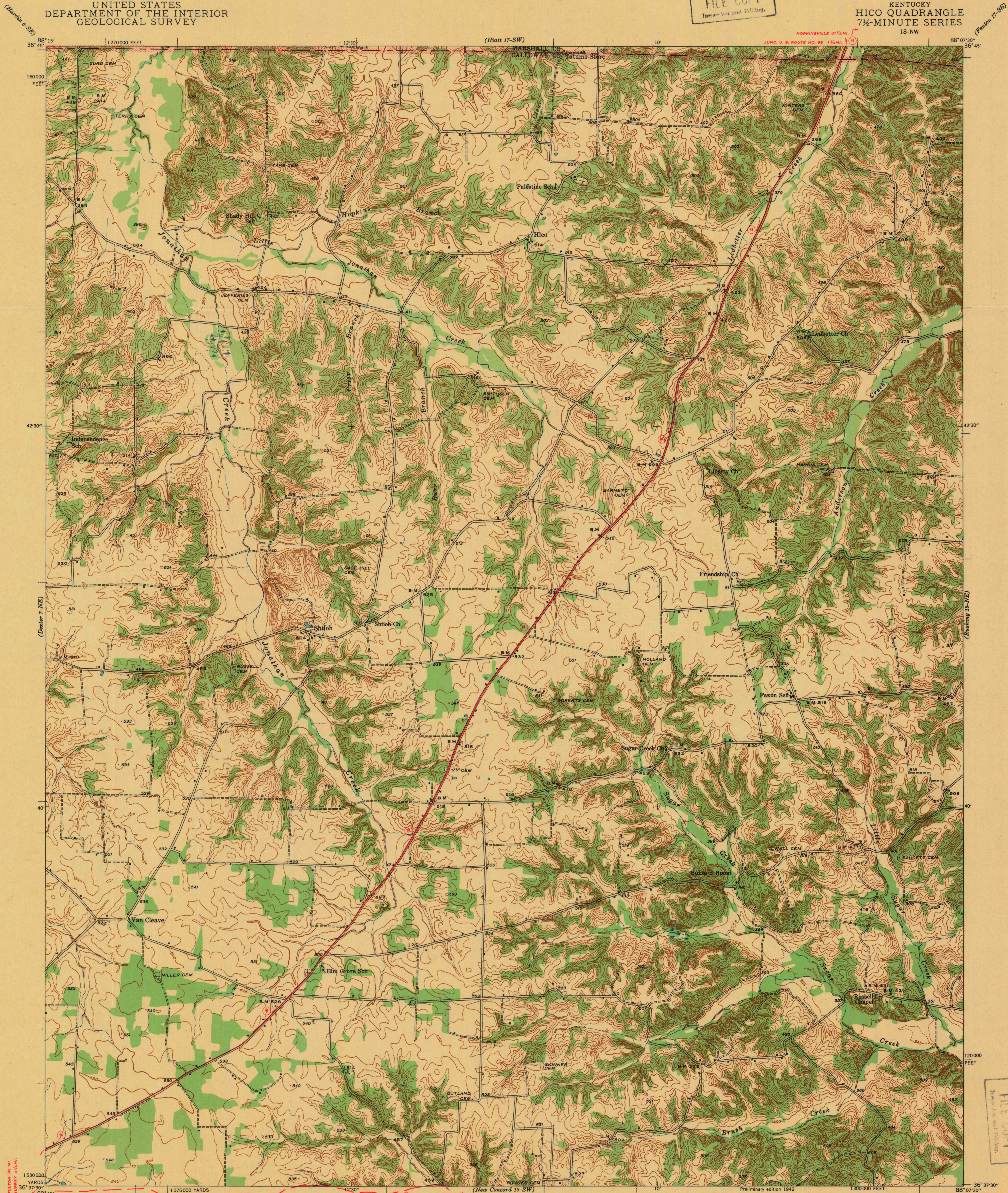
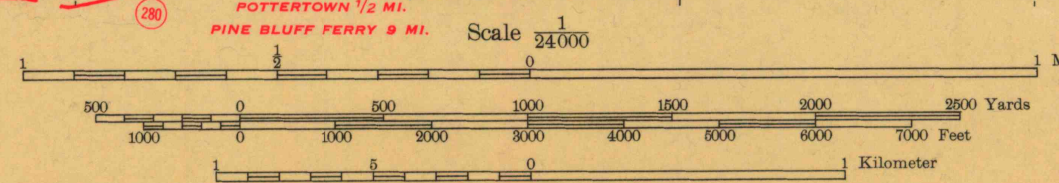


U. S. G. S.
FILE COPY
The original map is in the file.



Topography by C. S. Maltby, H. F. Ewing,
R. S. Pearse, and C. R. Atkins
Surveyed in 1939

TRUE NORTH
MAGNETIC NORTH
APPROXIMATE MEAN
DECLINATION, 1939



Contour interval 10 feet
Occasional 5 foot contours shown by broken lines
Datum is mean sea level

ROUTES USUALLY TRAVELED
HARD IMPROVED SURFACES
OTHER SURFACE IMPROVEMENTS
② U. S. ROUTE
③ STATE ROUTE
USGS
Historical File
Topographic Division

Polyconic projection. 1927 North American datum
5000 yard grid based on U. S. zone system, C
10000 foot grid based on Kentucky (South)
rectangular coordinate system

HICO, KY.
18-NW
N 3637.5-W 8807.5/7.5