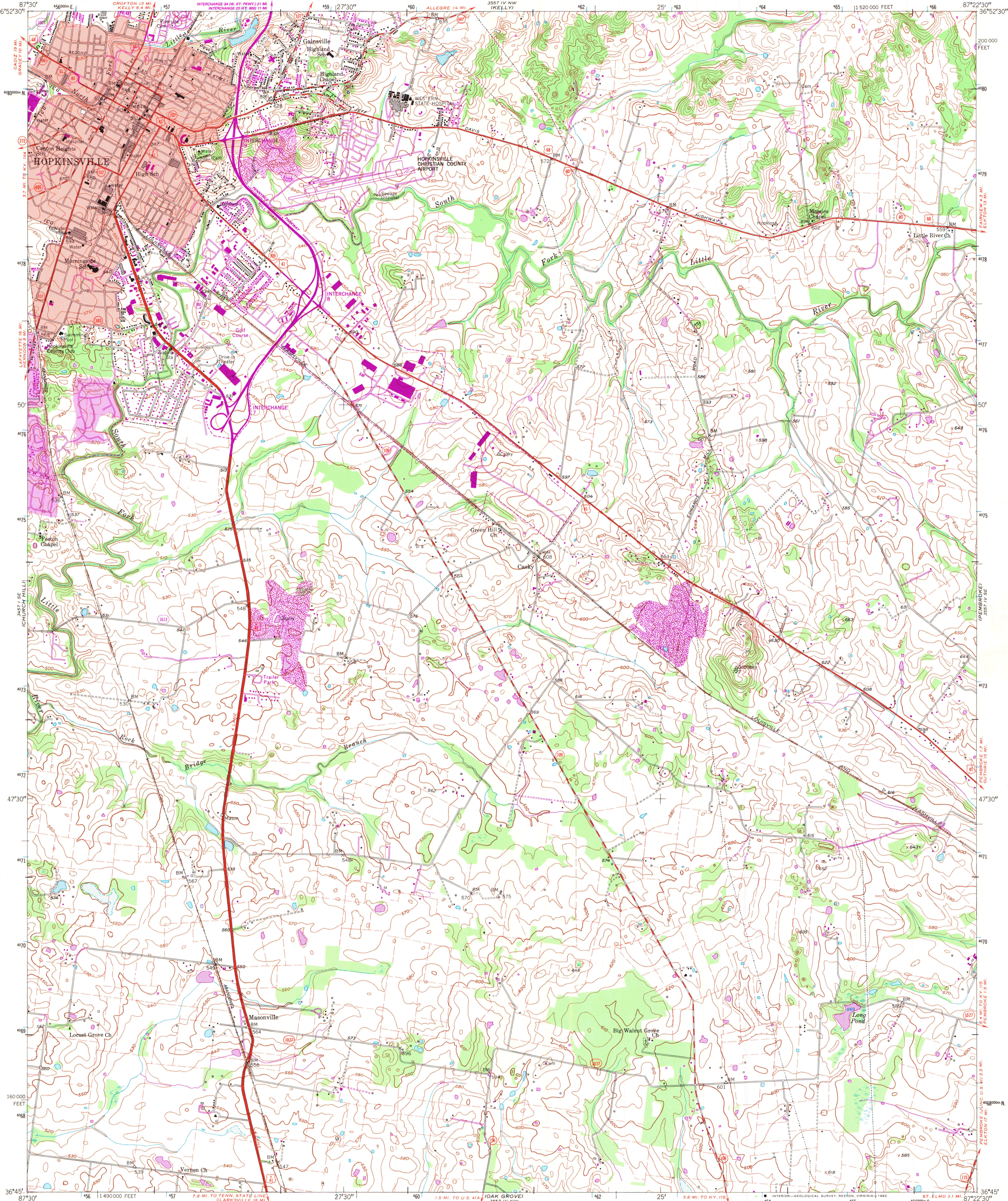


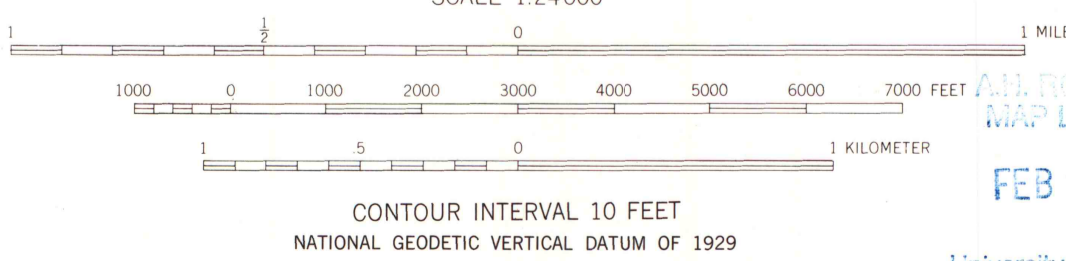
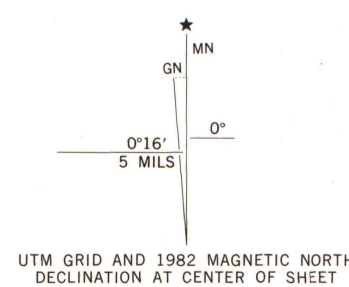
UNITED STATES
DEPARTMENT OF THE INTERIOR
GEOLOGICAL SURVEY

STATE OF KENTUCKY
KENTUCKY GEOLOGICAL SURVEY
UNIVERSITY OF KENTUCKY

HOPKINSVILLE QUADRANGLE
KENTUCKY—CHRISTIAN CO.
7.5 MINUTE SERIES (TOPOGRAPHIC)
SW/4 CASKY 15' QUADRANGLE



Mapped, edited, and published by the Geological Survey
Control by USGS and NOS/NOAA
Culture and drainage in part compiled from aerial photographs
taken 1949. Topography by planetable surveys 1950. Revised 1956
Polyconic projection. 10,000-foot grid ticks based on Kentucky
coordinate system, south zone. 1000-meter Universal Transverse
Mercator grid ticks, zone 16, shown in blue. 1927 North American
Datum. To place on the predicted North American Datum 1983
move the projection lines 5 meters south and 2 meters east
as shown by dashed corner ticks
Fine red dashed lines indicate selected fence and field lines where
generally visible on aerial photographs. This information is unchecked
Red tint indicates areas in which only landmark buildings are shown



THIS MAP COMPLIES WITH NATIONAL MAP ACCURACY STANDARDS
FOR SALE BY U. S. GEOLOGICAL SURVEY, RESTON, VIRGINIA 22092,
KENTUCKY GEOLOGICAL SURVEY, LEXINGTON, KENTUCKY 40506,
AND KENTUCKY DEPARTMENT OF COMMERCE, FRANKFORT, KENTUCKY 40601
A FOLDER DESCRIBING TOPOGRAPHIC MAPS AND SYMBOLS IS AVAILABLE ON REQUEST

FEB 2 1984

University of Wisconsin

Revisions shown in purple and woodland compiled in cooperation
with State of Kentucky agencies from aerial photographs taken
1981 and other sources. Contours adjusted adjacent to certain
photorevised hydrographic features. This information not field
checked. Map edited 1982
Purple tint indicates extension of urban areas

ROAD CLASSIFICATION
Heavy-duty ——— Light-duty ———
Medium-duty ——— Unimproved dirt ———
U. S. Route ——— State Route ———

HOPKINSVILLE, KY.
SW/4 CASKY 15' QUADRANGLE
N3645—W8722.5/7.5
1956
PHOTOREVISED 1982
DMA 3557 IV SW—SERIES V853

ARTHUR H. ROBINSON MAP LIBRARY
University of Wisconsin-Madison