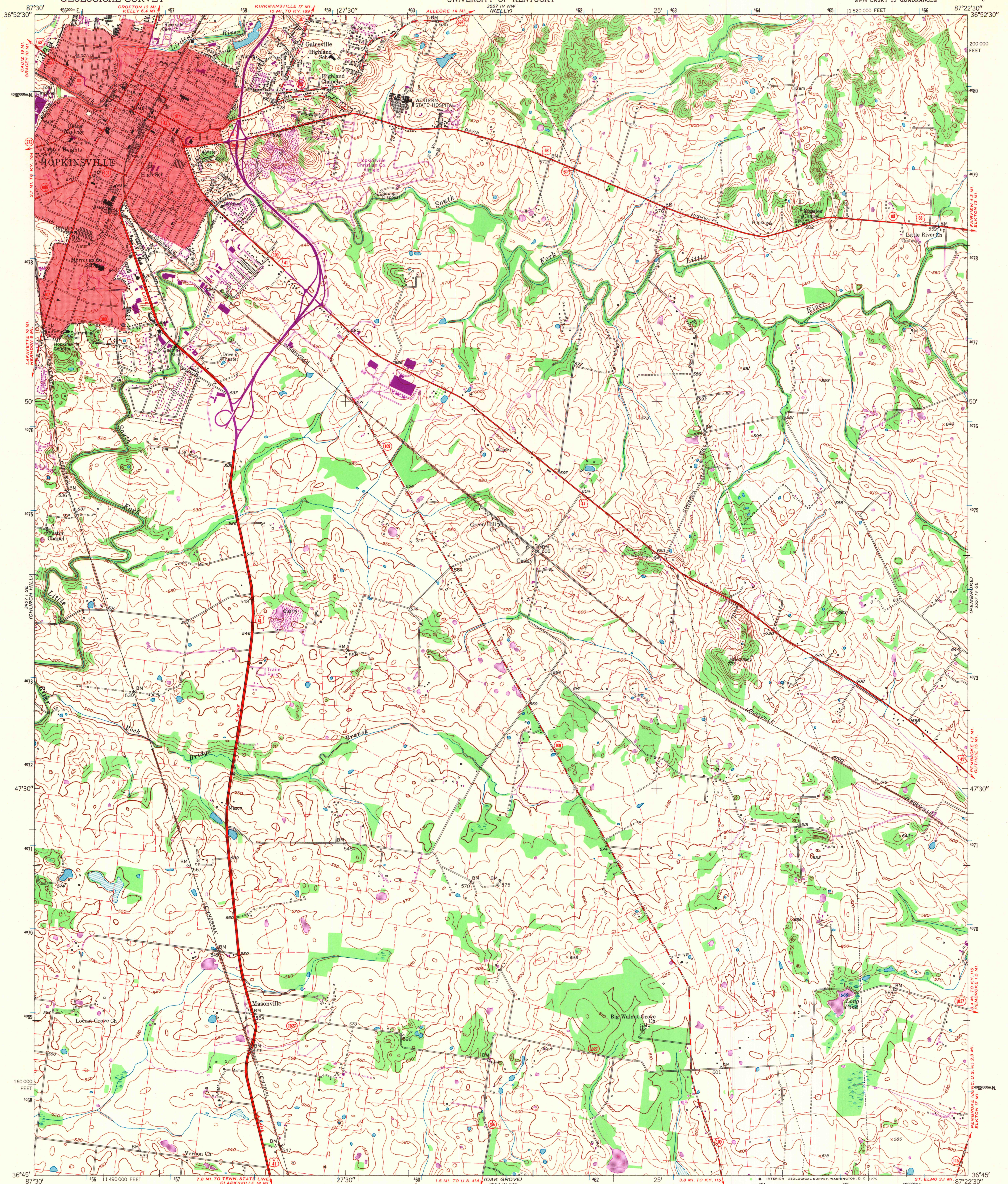


UNITED STATES  
DEPARTMENT OF THE INTERIOR  
GEOLOGICAL SURVEY

STATE OF KENTUCKY  
KENTUCKY GEOLOGICAL SURVEY  
UNIVERSITY OF KENTUCKY

HOPKINSVILLE QUADRANGLE  
KENTUCKY—CHRISTIAN CO.  
7.5 MINUTE SERIES (TOPOGRAPHIC)  
SW/4 CASKY 15' QUADRANGLE



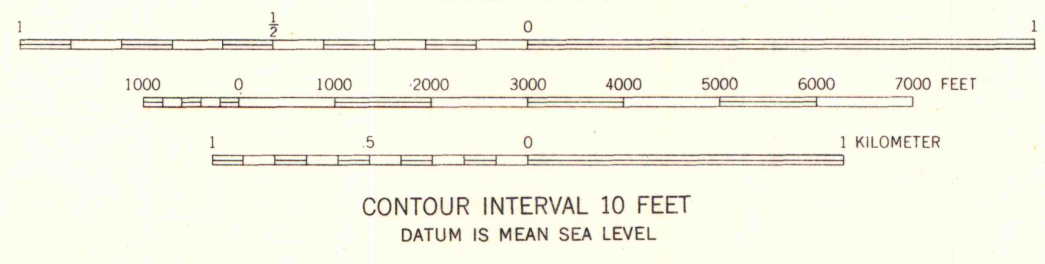
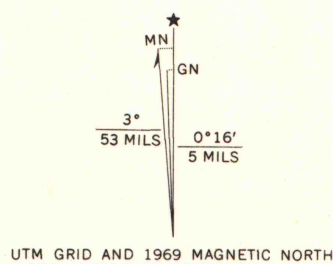
Mapped, edited, and published by the Geological Survey  
Control by USGS and USC&GS

Culture and drainage in part compiled from aerial photographs  
taken 1949. Topography by planetable surveys 1950. Revised 1956  
Polyconic projection. 1927 North American datum  
10,000-foot grid based on Kentucky coordinate system, south zone  
1000-meter Universal Transverse Mercator grid ticks,  
zone 16, shown in blue

Fine red dashed lines indicate selected fence and field lines  
visible on aerial photographs. This information is unchecked

Red tint indicates area in which only  
landmark buildings are shown

Revisions shown in purple compiled in cooperation with  
State of Kentucky agencies, from aerial photographs taken 1969  
This information not field checked



THIS MAP COMPLIES WITH NATIONAL MAP ACCURACY STANDARDS  
FOR SALE BY U. S. GEOLOGICAL SURVEY, WASHINGTON, D. C. 20242,  
KENTUCKY GEOLOGICAL SURVEY, LEXINGTON, KENTUCKY 40506,  
AND KENTUCKY DEPARTMENT OF COMMERCE, FRANKFORT, KENTUCKY 40601  
A FOLDER DESCRIBING TOPOGRAPHIC MAPS AND SYMBOLS IS AVAILABLE ON REQUEST

MAP AND AIR PHOTO LIBRARY

APR 20 1970

University of Wisconsin



ROAD CLASSIFICATION  
Heavy-duty ——— Light-duty ———  
Medium-duty ——— Unimproved dirt ———  
U. S. Route ——— State Route ———

HOPKINSVILLE, KY.  
SW/4 CASKY 15' QUADRANGLE  
N3645—W8722.5/7.5

1956  
PHOTOREVISED 1969  
AMS 3557 IV SW—SERIES V753