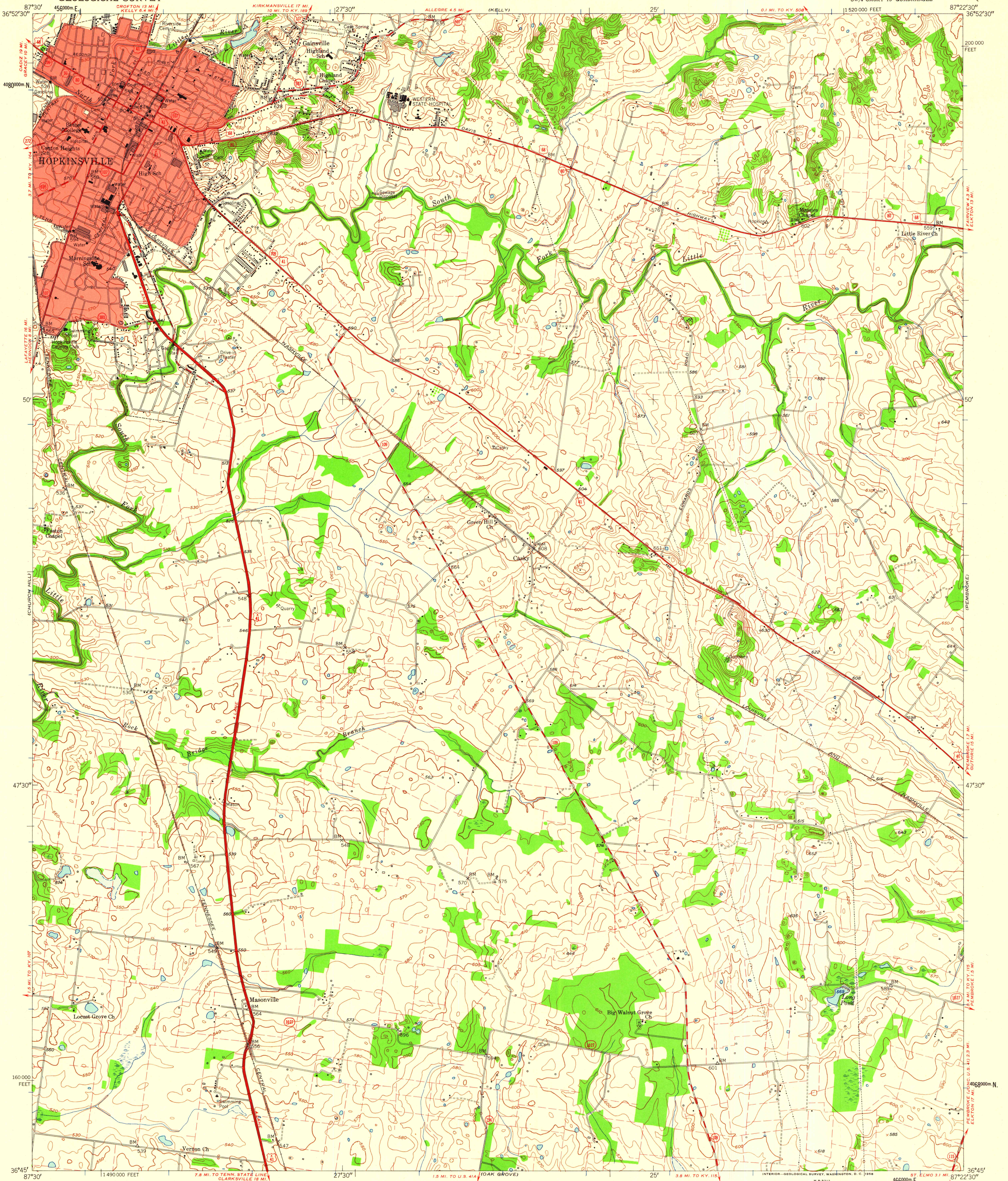


UNITED STATES
DEPARTMENT OF THE INTERIOR
GEOLOGICAL SURVEY

STATE OF KENTUCKY
DEPARTMENT OF ECONOMIC DEVELOPMENT

HOPKINSVILLE QUADRANGLE
KENTUCKY—CHRISTIAN CO.
7.5 MINUTE SERIES (TOPOGRAPHIC)
SW/4 CASKY 15' QUADRANGLE



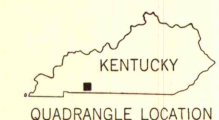
Mapped, edited, and published by the Geological Survey
Control by USGS and USC&GS
Culture and drainage in part compiled from aerial photographs
taken 1949. Topography by planetable surveys 1950. Revised 1956
Polyconic projection. 1927 North American datum
10,000-foot grid based on Kentucky coordinate system, south zone
1000-meter Universal Transverse Mercator grid ticks,
zone 16, shown in blue
Fine red dashed lines indicate selected fence and field lines
visible on aerial photographs. This information is unchecked
Red tint indicates area in which only
landmark buildings are shown

TRUE NORTH
MAGNETIC NORTH
APPROXIMATE MEAN
DECLINATION, 1956

SCALE 1:24,000
1 000 0 1000 2000 3000 4000 5000 6000 7000 FEET
1 5 0 1 KILOMETER
CONTOUR INTERVAL 10 FEET
DATUM IS MEAN SEA LEVEL

THIS MAP COMPLIES WITH NATIONAL MAP ACCURACY STANDARDS
FOR SALE BY U. S. GEOLOGICAL SURVEY, WASHINGTON 25, D. C.
AND KENTUCKY DEPARTMENT OF ECONOMIC DEVELOPMENT, FRANKFORT, KENTUCKY
A FOLDER DESCRIBING TOPOGRAPHIC MAPS AND SYMBOLS IS AVAILABLE ON REQUEST

ROAD CLASSIFICATION
Heavy-duty ——— Light-duty ———
Medium-duty ——— Unimproved dirt ———
U. S. Route ——— State Route ———



MAP AND AIR PHOTO LIBRARY
University of Wisconsin

HOPKINSVILLE, KY.
SW/4 CASKY 15' QUADRANGLE
N 3645—W 8722.5/7.5
1956