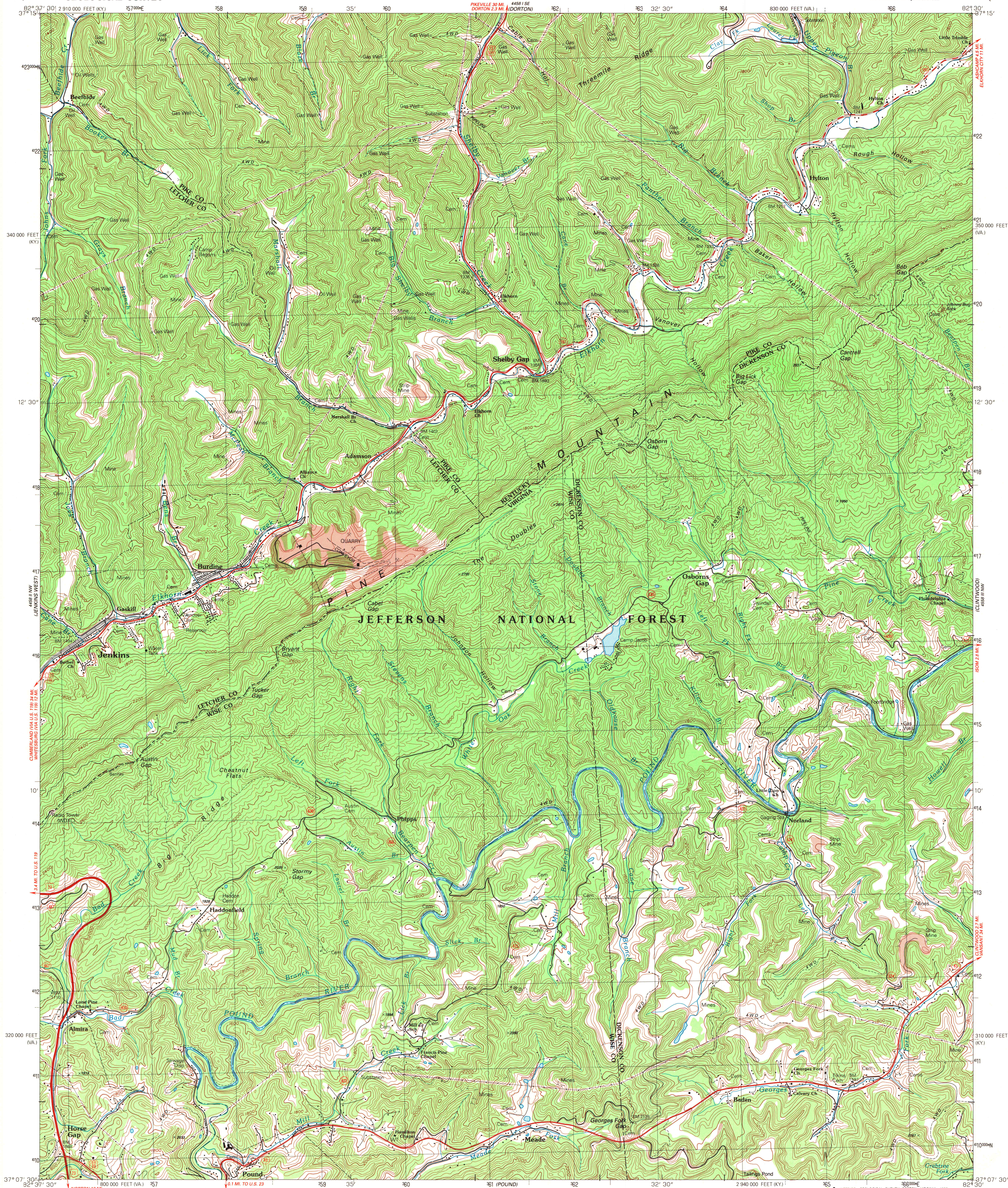
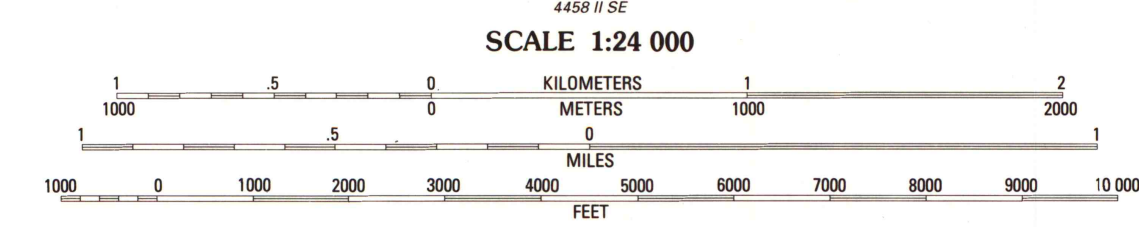
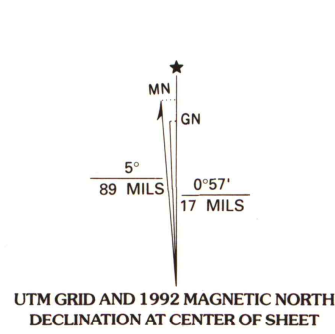


UNITED STATES
DEPARTMENT OF THE INTERIOR
GEOLOGICAL SURVEY

JENKINS EAST QUADRANGLE
KENTUCKY-VIRGINIA
7.5 MINUTE SERIES (TOPOGRAPHIC)
NE 4 POUND 15' QUADRANGLE



Produced by the United States Geological Survey
in cooperation with Commonwealth of Virginia agencies
Control by USGS and NOS/NOAA
Topography by photogrammetric methods from aerial photographs
taken 1960. Field checked 1963. Revised from aerial photographs
taken 1988. Field checked 1991. Map edited 1992
Projection: Virginia coordinate system, south zone
(Lambert conformal conic)
10,000-foot grid ticks: Virginia coordinate
system and Kentucky coordinate system, south zone
1000-meter Universal Transverse Mercator grid, zone 17
1927 North American Datum
The difference between 1927 North American Datum and North
American Datum of 1983 (NAD 83) for 7.5-minute intersections
is given in USGS Bulletin 1875. The NAD 83 is shown by
dashed corner ticks
There may be private inholdings within the boundaries of
the National or State reservations shown on this map



THIS MAP COMPLIES WITH NATIONAL MAP ACCURACY STANDARDS
FOR SALE BY U.S. GEOLOGICAL SURVEY, DENVER, COLORADO 80225, OR RESTON, VIRGINIA 22092
VIRGINIA DIVISION OF MINERAL RESOURCES, CHARLOTTESVILLE, VIRGINIA 22903
KENTUCKY GEOLOGICAL SURVEY, LEXINGTON, KENTUCKY 40506
AND KENTUCKY DEPARTMENT OF COMMERCE, FRANKFORT, KENTUCKY 40601
A FOLDER DESCRIBING TOPOGRAPHIC MAPS AND SYMBOLS IS AVAILABLE ON REQUEST

ROAD CLASSIFICATION
Primary highway, hard surface Light-duty road, hard or improved surface
Secondary highway, hard surface Unimproved road
Interstate Route U.S. Route State Route

A.H. ROBINSON
MAP LIBRARY
DEC 21 1992
JENKINS EAST, KY.-VA.
NE 4 POUND 15' QUADRANGLE
37082-B5-TF-024
1992
DMA 4458 II NE-SERIES V834
University of Wisconsin
Madison



U.S. Depository Copy
DO NOT DISCARD