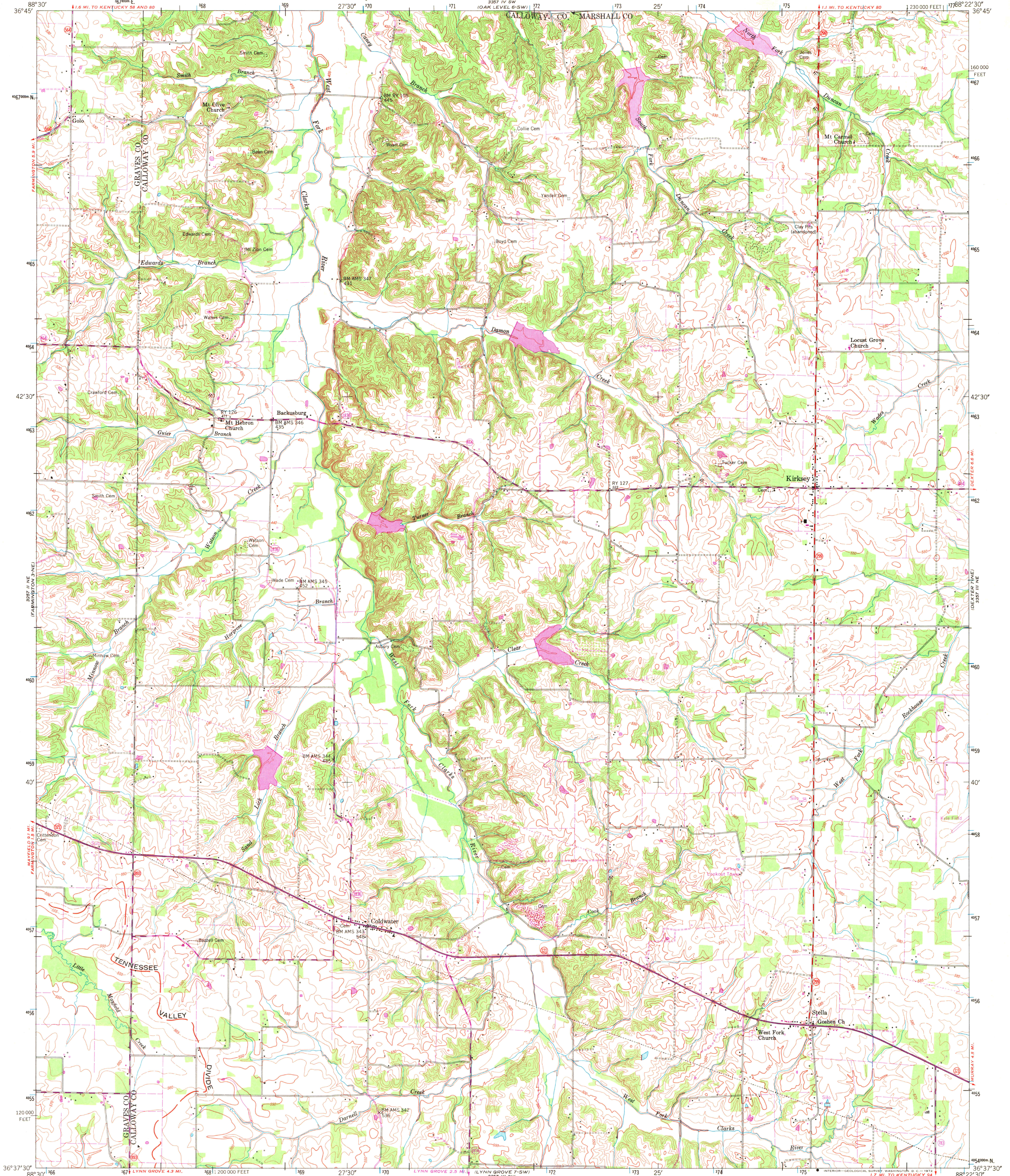


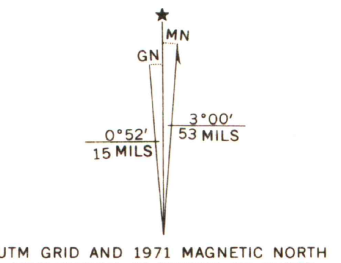
UNITED STATES
DEPARTMENT OF THE INTERIOR
GEOLOGICAL SURVEY

UNITED STATES
TENNESSEE VALLEY AUTHORITY
MAPS AND SURVEYS BRANCH

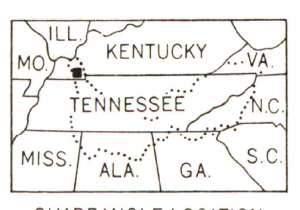
KIRKSEY QUADRANGLE
KENTUCKY
7.5 MINUTE SERIES (TOPOGRAPHIC) 7-NW



Mapped and edited by Tennessee Valley Authority
Published by the Geological Survey
Control by USC&GS, USGS, and TVA
Topography by USGS and TVA by photogrammetric
methods using aerial photographs taken 1948 and 1949.
Map field checked by TVA, 1951
Polyconic projection, 1927 North American datum
10,000 foot grid based on Kentucky (South)
rectangular coordinate system
1000 meter Universal Transverse Mercator Grid ticks,
Zone 16, shown in blue
Revisions shown in purple and recompilation of woodland
areas compiled by the Tennessee Valley Authority from aerial
photographs taken 1971. This information not field checked
Fine purple dashed lines indicate selected fence and field lines
visible on aerial photography. This information is unchecked



SCALE 1:24,000
CONTOUR INTERVAL 10 FEET
DASHED LINES REPRESENT HALF-INTERVAL CONTOURS
DATUM IS MEAN SEA LEVEL
THIS MAP COMPLIES WITH NATIONAL MAP ACCURACY STANDARDS
FOR SALE BY U.S. GEOLOGICAL SURVEY, WASHINGTON, D.C. 20242,
KENTUCKY GEOLOGICAL SURVEY, LEXINGTON, KENTUCKY 40506
KENTUCKY DEPARTMENT OF COMMERCE, FRANKFORT, KENTUCKY 40601
U.S. TENNESSEE VALLEY AUTHORITY, CHATTANOOGA, TENN. 37401 OR KNOXVILLE, TENN. 37902
A FOLDER DESCRIBING TOPOGRAPHIC MAPS AND SYMBOLS IS AVAILABLE ON REQUEST



ROAD CLASSIFICATION
Heavy-duty Poor motor road
Medium-duty Wagon and jeep track
Light-duty Foot trail
U.S. Route State Route
MAP AND AIR PHOTO
SEP 28 1972
University of Wisconsin
KIRKSEY, KY.
N3637.5-W8822.9/7.5
1951
PHOTOREVISED 1971
AMS 3357 III NW-SERIES 7853