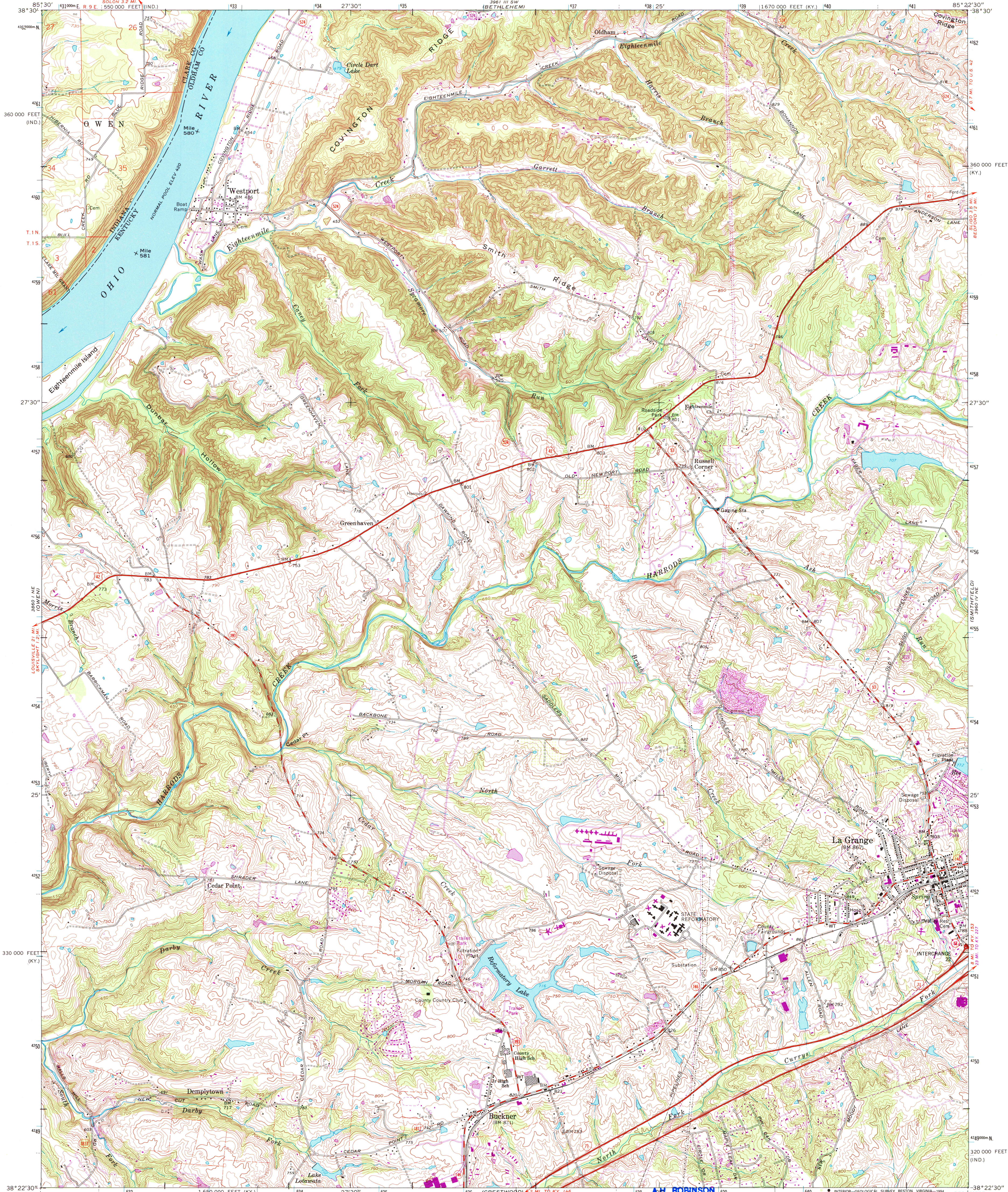


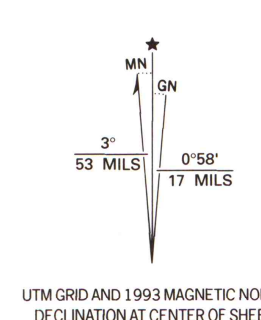
UNITED STATES  
DEPARTMENT OF THE INTERIOR  
GEOLOGICAL SURVEY

STATE OF KENTUCKY  
KENTUCKY GEOLOGICAL SURVEY  
UNIVERSITY OF KENTUCKY

LA GRANGE QUADRANGLE  
KENTUCKY-INDIANA  
7.5 MINUTE SERIES (TOPOGRAPHIC)



Produced by the United States Geological Survey  
in cooperation with Indiana Department of Natural Resources  
Control by USGS and NGS/NOAA  
Topography in Kentucky by photogrammetric methods from aerial  
photographs taken 1952. Field checked 1954. Topography in Indiana  
by planimetric surveys 1937. Revised from aerial photographs  
taken 1969. Field checked 1969  
Projection: Kentucky coordinate system, north zone  
(Lambert conformal conic)  
10,000-foot grid ticks: Kentucky coordinate system,  
north zone and Indiana coordinate system, east zone  
1000-meter Universal Transverse Mercator grid ticks, zone 16, shown in blue  
1927 North American Datum (NAD 27)  
North American Datum of 1983 (NAD 83) is shown by dashed corner ticks  
The values of the shift between NAD 27 and NAD 83 for 7.5-minute  
intersections are given in USGS Bulletin 1575  
Fine red dashed lines indicate selected fence and field lines where  
generally visible on aerial photographs. This information is unchecked



COMPLIES WITH U.S. GEOLOGICAL SURVEY STANDARDS FOR SPATIAL ACCURACY - CLASS 2  
FOR SALE BY U.S. GEOLOGICAL SURVEY, DENVER, COLORADO 80225, OR RESTON, VIRGINIA 22092  
KENTUCKY GEOLOGICAL SURVEY, LEXINGTON, KENTUCKY 40506  
KENTUCKY DEPARTMENT OF COMMERCE, FRANKFORT, KENTUCKY 40601  
AND INDIANA DEPARTMENT OF NATURAL RESOURCES, INDIANAPOLIS, INDIANA 46204  
A FOLDER DESCRIBING TOPOGRAPHIC MAPS AND SYMBOLS IS AVAILABLE ON REQUEST

A.H. ROBINSON  
MAP LIBRARY  
AUG 04 1994  
U.S. Regional  
Depository Copy  
DO NOT DISCARD  
University of Wisconsin  
Madison

ROAD CLASSIFICATION  
Primary highway, all weather, hard surface  
Secondary highway, all weather, hard surface  
Light-duty road, all weather, improved surface  
Unimproved road, fair or dry weather  
Interstate Route  
U.S. Route  
State Route

LA GRANGE, KY.-IND.  
NW/4 LA GRANGE 15' QUADRANGLE  
38085-D4-TF-024  
1969  
REVISED 1993  
DMA 3960 IV NW-SERIES V853