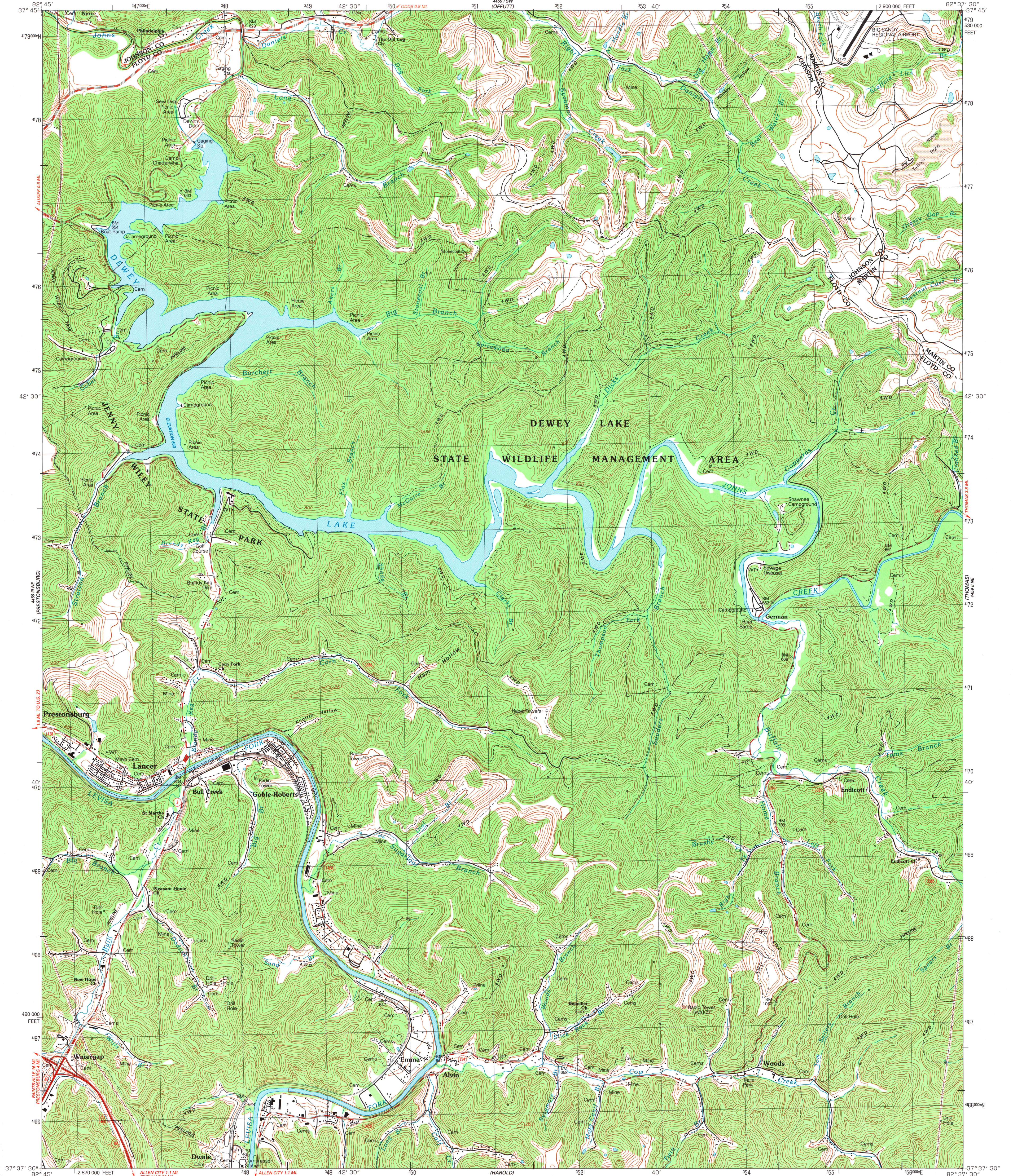


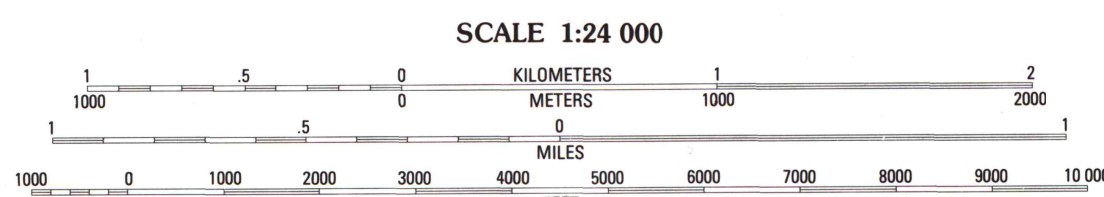
UNITED STATES  
DEPARTMENT OF THE INTERIOR  
GEOLOGICAL SURVEY

LANCER QUADRANGLE  
KENTUCKY  
7.5 MINUTE SERIES (TOPOGRAPHIC)  
NW/4 HAROLD 15' QUADRANGLE



Produced by the United States Geological Survey  
in cooperation with Kentucky Geological Survey  
Control by USGS and NOS/NOAA  
Topography by photogrammetric methods from aerial photographs  
taken 1951. Field checked 1954. Revised from aerial photographs  
taken 1988. Field checked 1990. Map edited 1992  
Projection and 10,000-foot grid ticks: Kentucky coordinate  
system, south zone (Lambert conformal conic)  
1000-meter Universal Transverse Mercator grid, zone 17  
1927 North American Datum  
The difference between 1927 North American Datum and North  
American Datum of 1983 (NAD 83) for 7.5-minute intersections  
is given in USGS Bulletin 1875. The NAD 83 is shown by  
dashed corner ticks  
There may be private inholdings within the boundaries of  
the National or State reservations shown on this map  
Unlabeled wells are gas wells

UTM GRID AND 1992 MAGNETIC NORTH  
DECLINATION AT CENTER OF SHEET



CONTOUR INTERVAL 40 FEET  
NATIONAL GEODETIC VERTICAL DATUM OF 1929

COMPLIES WITH U.S. GEOLOGICAL SURVEY STANDARDS FOR SPATIAL ACCURACY - CLASS 2  
FOR SALE BY U.S. GEOLOGICAL SURVEY, DENVER, COLORADO 80225, OR RESTON, VIRGINIA 22092  
KENTUCKY GEOLOGICAL SURVEY, LEXINGTON, KENTUCKY 40506  
AND KENTUCKY DEPARTMENT OF COMMERCE, FRANKFORT, KENTUCKY 40601  
A FOLDER DESCRIBING TOPOGRAPHIC MAPS AND SYMBOLS IS AVAILABLE ON REQUEST



U.S. Depository Copy  
DO NOT DISCARD

A.H. ROBINSON  
MAP LIBRARY

DEC 21 1992

University of Wisconsin  
Madison

LANCER, KY.  
NW/4 HAROLD 15' QUADRANGLE  
37082-F6-TF-024

1992

DMA 4459 II NW-SERIES V853