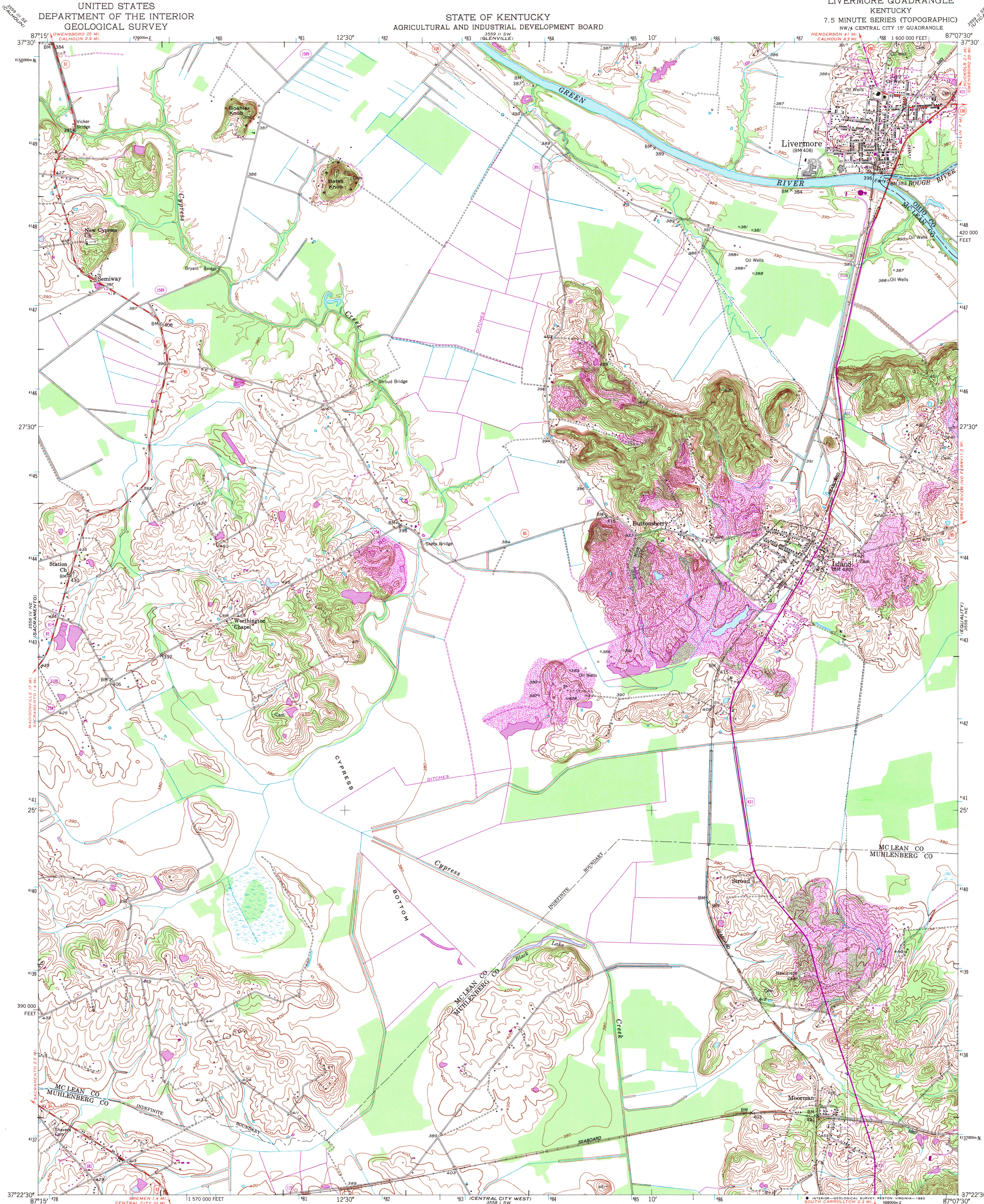


UNITED STATES
DEPARTMENT OF THE INTERIOR
GEOLOGICAL SURVEY

STATE OF KENTUCKY
AGRICULTURAL AND INDUSTRIAL DEVELOPMENT BOARD

LIVERMORE QUADRANGLE
KENTUCKY
7.5 MINUTE SERIES (TOPOGRAPHIC)
NW 1/4 CENTRAL CITY 15' QUADRANGLE



Mapped, edited, and published by the Geological Survey

Control by USGS, NOS/NOAA, and USCE

Culture and drainage in part compiled from aerial photographs

taken 1950. Topography by planetable surveys 1952

Polyconic projection. 10,000-foot grid ticks based on Kentucky

coordinate system, south zone. 1000-meter Universal Transverse

Mercator grid ticks, zone 16, shown in blue

1927 North American Datum

To place on the predicted North American Datum 1983 move the

projection lines 4 meters south and 1 meter east as shown

by dashed corner ticks

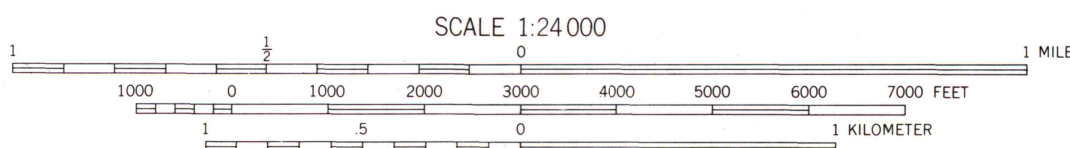
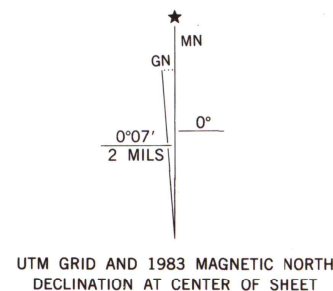
Revisions shown in purple and woodland compiled in cooperation

with State of Kentucky agencies from aerial photographs taken

1981 and other sources. Contours adjusted adjacent to certain

photorevised hydrographic features. This information not field

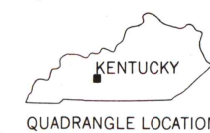
checked. Map edited 1983



CONTOUR INTERVAL 10 FEET
NATIONAL GEODETIC VERTICAL DATUM OF 1929

THIS MAP COMPLIES WITH NATIONAL MAP ACCURACY STANDARDS
FOR SALE BY U. S. GEOLOGICAL SURVEY, RESTON, VIRGINIA 22092,
KENTUCKY GEOLOGICAL SURVEY, LEXINGTON, KENTUCKY 40506,
AND KENTUCKY DEPARTMENT OF COMMERCE, FRANKFORT, KENTUCKY 40601
A FOLDER DESCRIBING TOPOGRAPHIC MAPS AND SYMBOLS IS AVAILABLE ON REQUEST

ROAD CLASSIFICATION			
Heavy-duty	4 LANE 6 LANE	Light-duty	
Medium-duty	4 LANE 6 LANE	Unimproved dirt	
	U. S. Route		State Route



ALL INFORMATION
MAP LIBRARY
FEB 2 1984
University of Wisconsin
Madison

LIVERMORE, KY.
NW 1/4 CENTRAL CITY 15' QUADRANGLE
37087-D2-TF-024

1952
PHOTOREVISED 1983
DMA 3558 I NW-SERIES Y853
ARTHUR H. ROBINSON MAP LIBRARY
University of Wisconsin-Madison