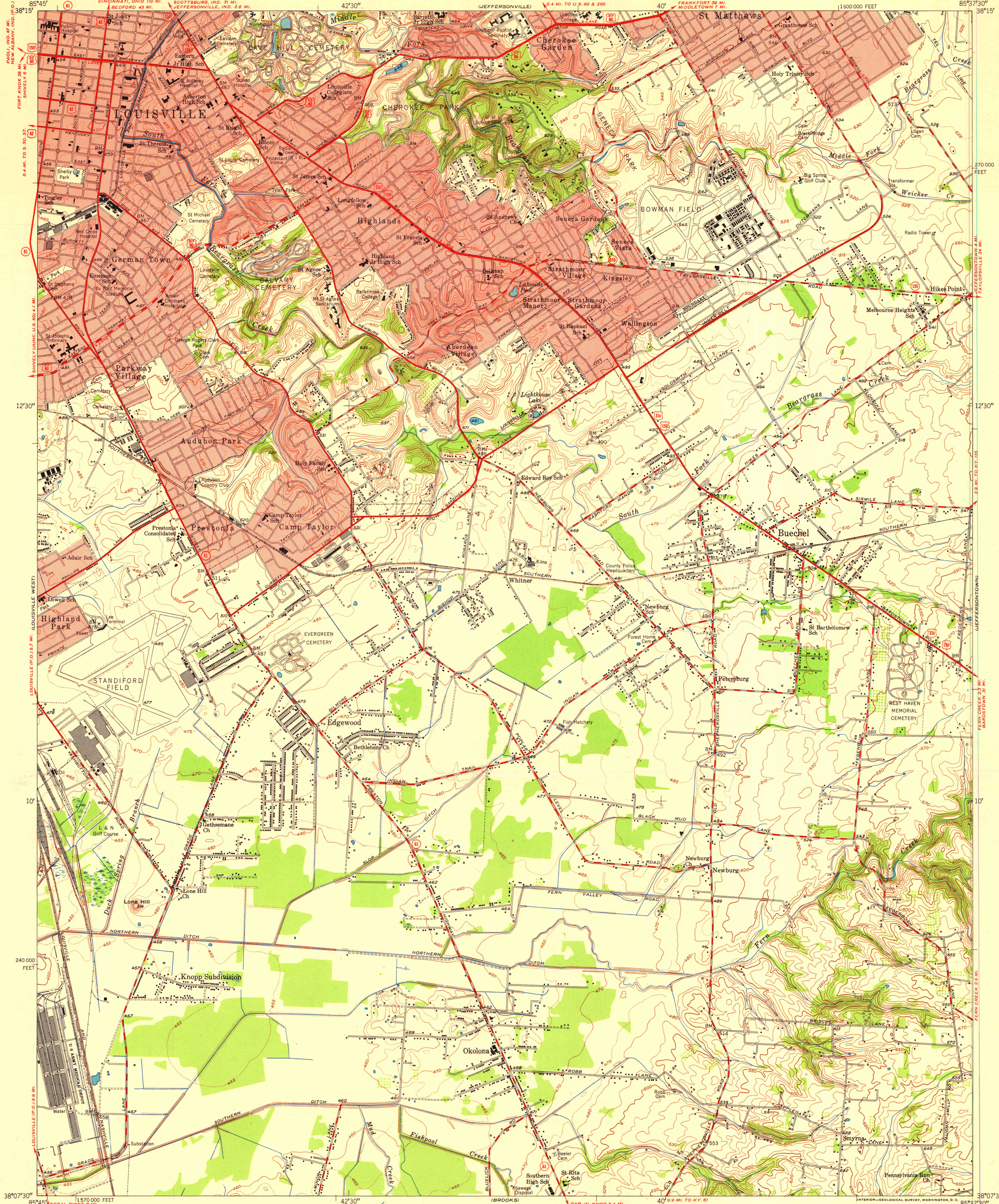


UNITED STATES
DEPARTMENT OF THE INTERIOR
GEOLOGICAL SURVEY

STATE OF KENTUCKY
LOUISVILLE AND JEFFERSON COUNTY
PLANNING AND ZONING COMMISSION

UNITED STATES
DEPARTMENT OF THE ARMY
CORPS OF ENGINEERS

LOUISVILLE EAST QUADRANGLE
KENTUCKY-JEFFERSON CO.
7.5 MINUTE SERIES (TOPOGRAPHIC)
NW 1/4 LOUISVILLE 15' QUADRANGLE



Mapped by the Army Map Service and the Geological Survey
Edited and published by the Geological Survey

Control by USGS, USC&GS, USCE, and City of Louisville
Topography from aerial photographs by multiplex methods
Aerial photographs taken 1947. Field check 1950

Polyconic projection. 1927 North American datum
10,000-foot grid based on Kentucky coordinate system,
north zone

Red tint indicates areas in which only
landmark buildings are shown

TRUE NORTH
MAGNETIC NORTH
APPROXIMATE MEAN
DECLINATION, 1950

SCALE 1:24000

1000 0 1000 2000 3000 4000 5000 6000 7000 FEET

1 5 0 1 KILOMETER

CONTOUR INTERVAL 10 FEET

DOTTED LINES REPRESENT HALF-INTERVAL CONTOURS

DATUM IS MEAN SEA LEVEL

THIS MAP COMPLIES WITH NATIONAL MAP ACCURACY STANDARDS

FOR SALE BY U. S. GEOLOGICAL SURVEY, WASHINGTON 25, D. C.

AND KENTUCKY AGRICULTURAL AND INDUSTRIAL DEVELOPMENT BOARD, FRANKFORT, KENTUCKY

A FOLDER DESCRIBING TOPOGRAPHIC MAPS AND SYMBOLS IS AVAILABLE ON REQUEST

ROAD CLASSIFICATION

Heavy-duty 4 LANE 16 LANE Light-duty

Medium-duty 4 LANE 16 LANE Unimproved dirt

U. S. Route State Route

UNIVERSITY OF WISCONSIN
Department of Geography

LOUISVILLE EAST, KY.
NW 1/4 LOUISVILLE 15' QUADRANGLE
N3807.5-W8537.5

EDITION OF 1951