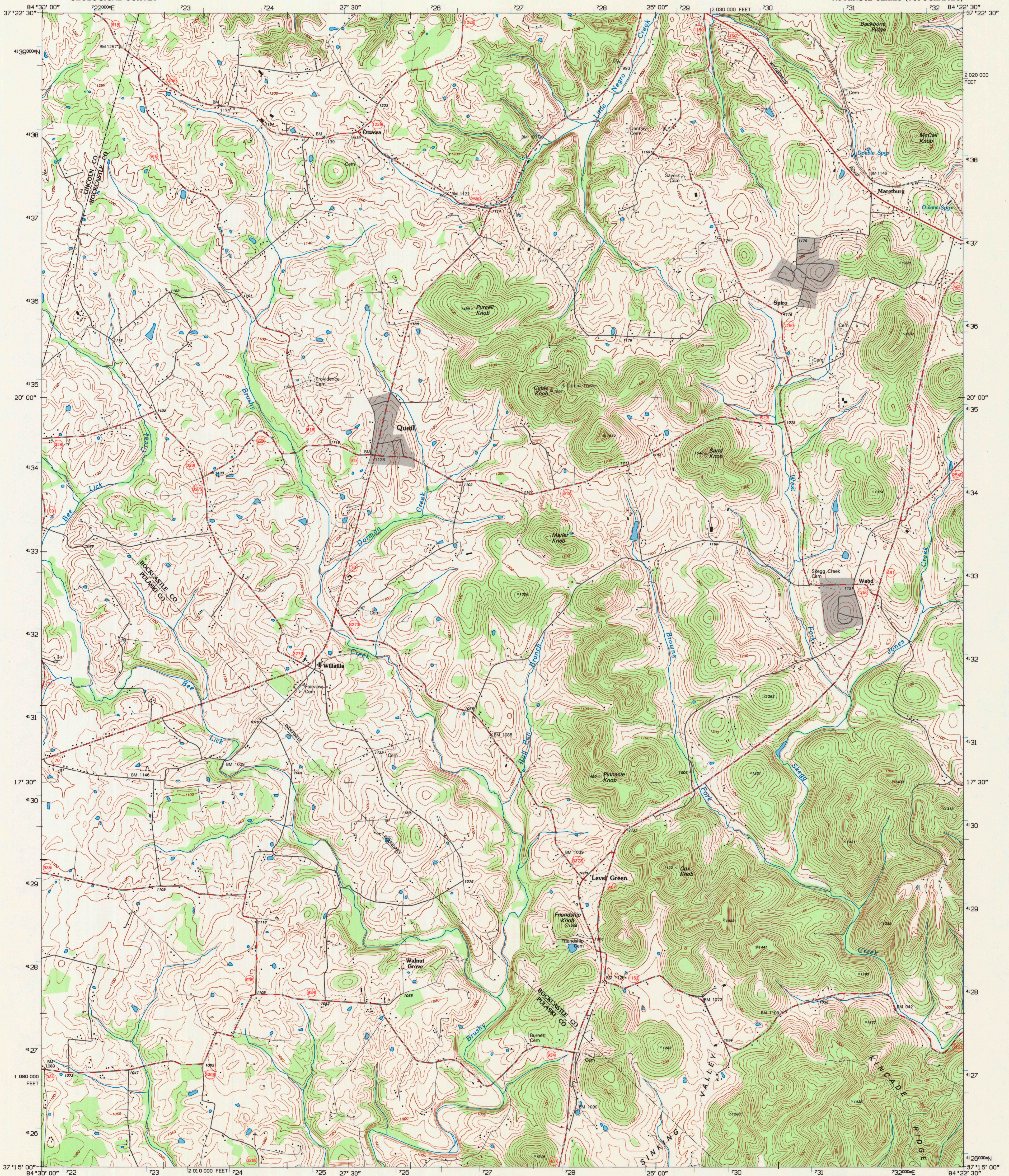
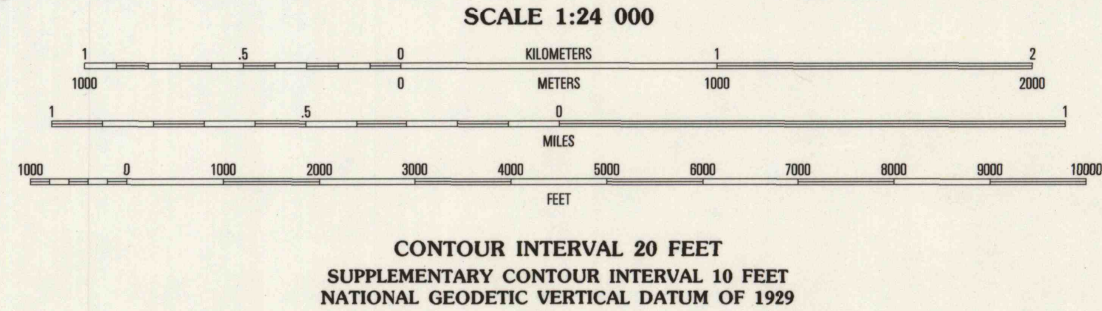
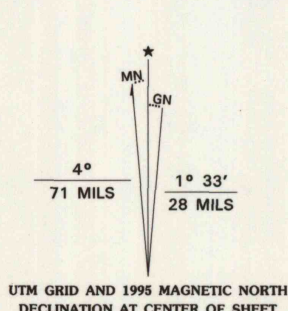


UNITED STATES
DEPARTMENT OF THE INTERIOR
GEOLOGICAL SURVEY

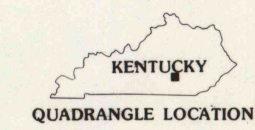
MARETBURG QUADRANGLE
KENTUCKY
7.5-MINUTE SERIES (TOPOGRAPHIC)



Produced by the United States Geological Survey
Compiled by photogrammetric methods from imagery dated 1950
Field checked 1953. Revised in cooperation with State of
Kentucky agencies from imagery dated 1993. PLSS and survey
control current as of 1993. Map edited 1995. Contours not
revised. Contours that conflict with revised planimetry are
dashed.
North American Datum of 1983 (NAD 83). Projection and
blue 1000-meter ticks: Universal Transverse Mercator, zone 16
10 000-foot ticks: Kentucky Coordinate System of 1983 (south zone)
North American Datum of 1927 (NAD 27) is shown by dashed
corner ticks. The values of the shift between NAD 83 and NAD 27
for 7.5-minute intersections are obtained from National Geodetic
Survey NADCON software

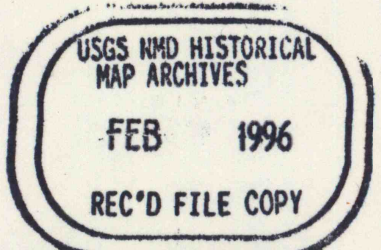


THIS MAP COMPLIES WITH NATIONAL MAP ACCURACY STANDARDS
FOR SALE BY U.S. GEOLOGICAL SURVEY, DENVER, COLORADO 80225, OR RESTON, VIRGINIA 22092
KENTUCKY GEOLOGICAL SURVEY, LEXINGTON, KENTUCKY 40506
AND KENTUCKY DEPARTMENT OF COMMERCE, FRANKFORT, KENTUCKY 40601
A FOLDER DESCRIBING TOPOGRAPHIC MAPS AND SYMBOLS IS AVAILABLE ON REQUEST



QUADRANGLE LOCATION			
1	2	3	1 Crab Orchard
			2 Brodhead
			3 Wildie
			4 Woodstock
			5 Mount Vernon
			6 Bolivar
			7 Shopville
			8 Billows

ROAD CLASSIFICATION
Primary highway
Secondary highway
Light-duty road, hard or improved surface
Unimproved road
Interstate Route U.S. Route State Route



MARETBURG, KY
37084-C4-TF-024
1993
DMA 4158 IV SW - SERIES V853

