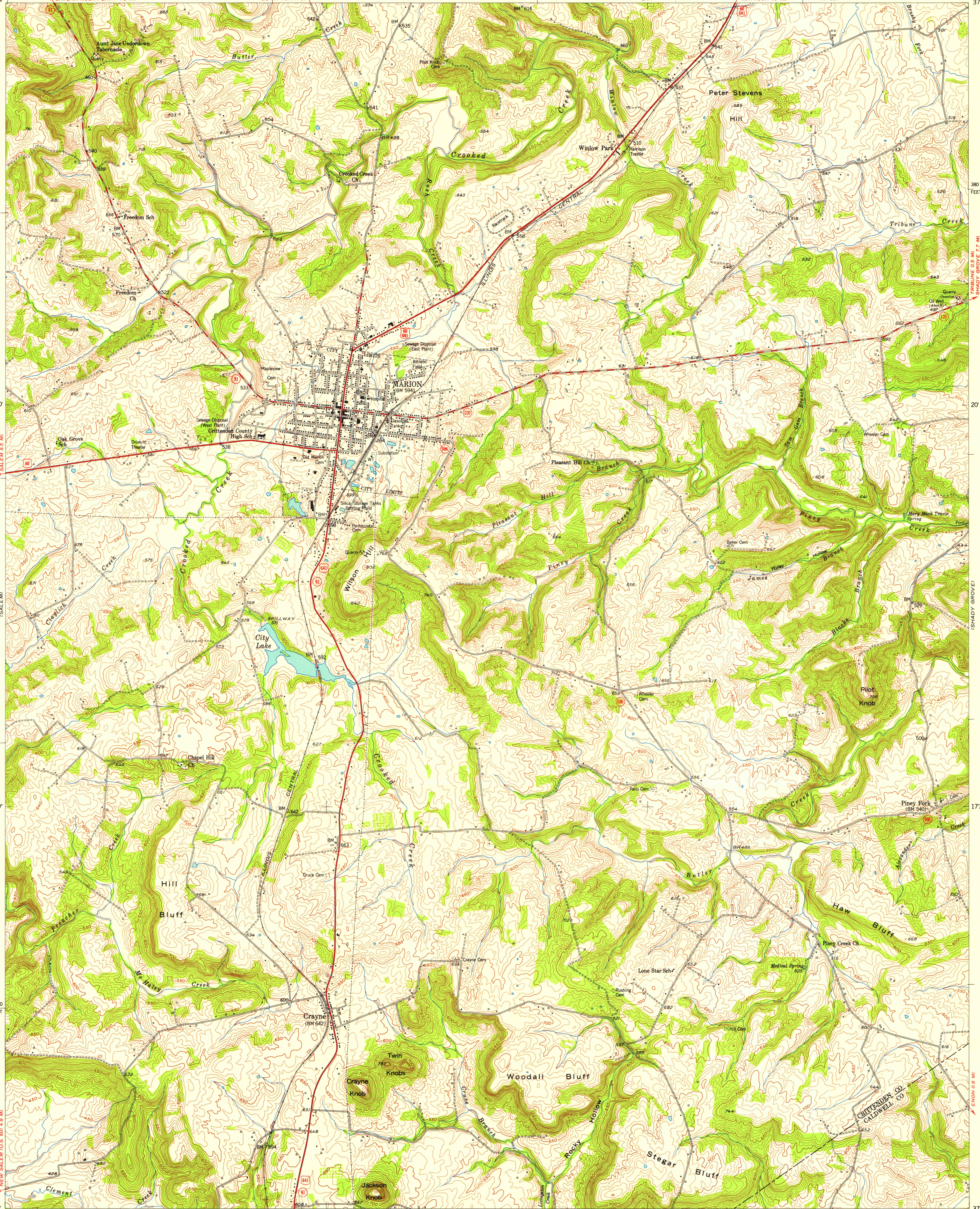


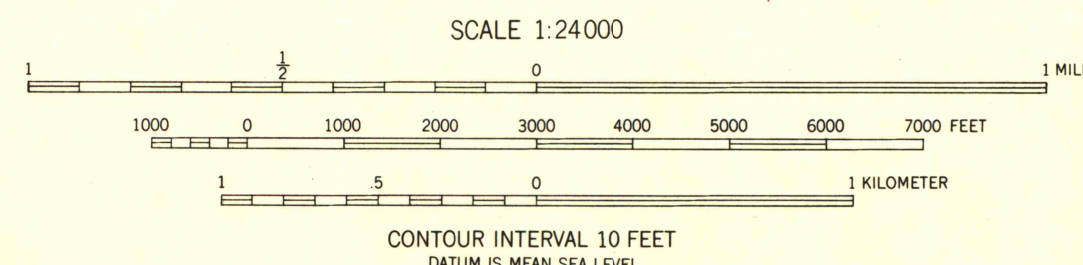
CAVE IN ROCK
NORRIS CITY, ILL. 45 MI.
CAVE IN ROCK FERRY 7.3 MI.
3.2 MI. TO KY. 91
SULLIVAN 11 MI.
MATTOON 1.8 MI.
134000 FEET
88°07'30"
37°22'30"
37°20'
1730'
35000 FEET
37°15'
88°07'30"
131000 FEET
NEW SALEM 4.9 MI.
FREDONIA 3.7 MI.
PRINCETON 17 MI.
FREDONIA 3.2
FREDONIA 4.5 MI.
134000 FEET
88°07'30"
37°15'

BLACKFORD
38000 FEET
20
1730'
1730'
37°15'
88°00'
37°22'30"



Mapped, edited, and published by the Geological Survey
Control by USGS and USC&GS
Topography from aerial photographs by Kelsch plottor
Aerial photographs taken 1952. Field check 1954
Polyconic projection. 1927 North American datum
10,000-foot grid based on Kentucky coordinate system,
south zone

TRUE NORTH
MAGNETIC NORTH
APPROXIMATE MEAN
DECLINATION, 1954



ROAD CLASSIFICATION

Heavy-duty	Light-duty
Medium-duty	Unimproved dirt
U. S. Route	State Route

UNIVERSITY OF WISCONSIN
Department of Geography
MARION, KY.
SE/4 CAVE IN ROCK IS QUADRANGLE
N3715-W8800/7.5

THIS MAP COMPLIES WITH NATIONAL MAP ACCURACY STANDARDS
FOR SALE BY U.S. GEOLOGICAL SURVEY, WASHINGTON 25, D.C.
AND KENTUCKY AGRICULTURAL AND INDUSTRIAL DEVELOPMENT BOARD, FRANKFORT, KENTUCKY
A FOLDER DESCRIBING TOPOGRAPHIC MAPS AND SYMBOLS IS AVAILABLE ON REQUEST