

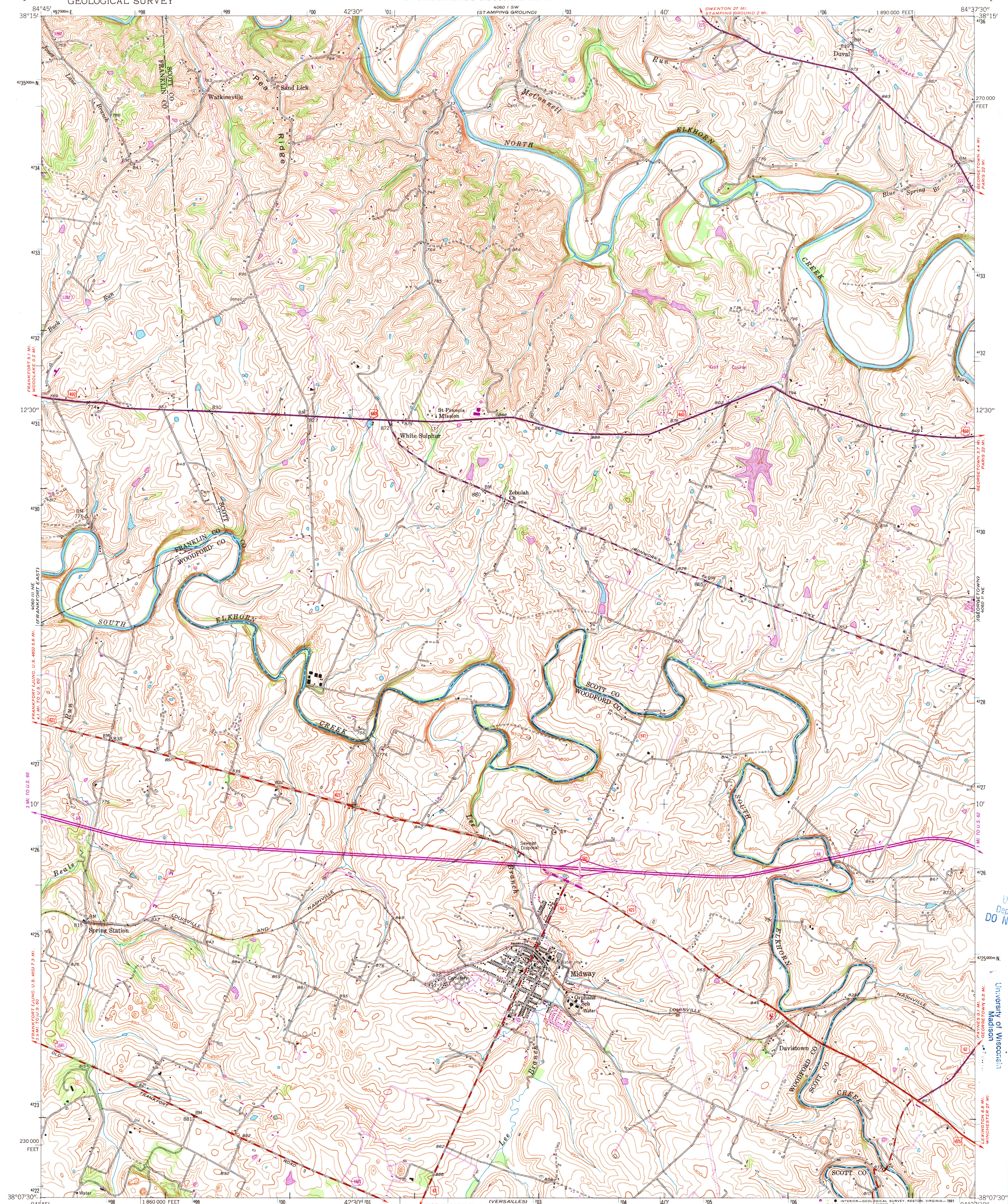
4000 U.S.  
(SWITZER)

UNITED STATES  
DEPARTMENT OF THE INTERIOR  
GEOLOGICAL SURVEY

STATE OF KENTUCKY  
AGRICULTURAL AND INDUSTRIAL DEVELOPMENT BOARD

MIDWAY QUADRANGLE  
KENTUCKY  
7.5 MINUTE SERIES (TOPOGRAPHIC)

4000 U.S.  
(LAW)



(TYPED)  
4000 U.S.

Mapped, edited, and published by the Geological Survey

Control by USGS and USC&GS

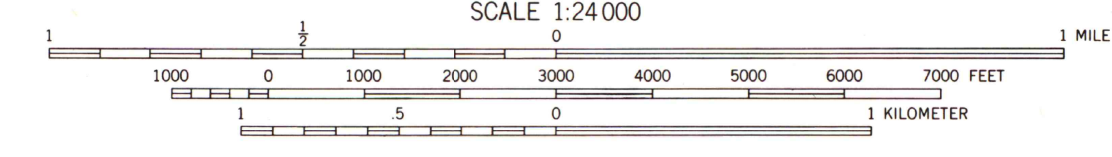
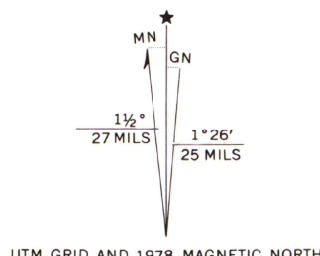
Topography from aerial photographs by stereophotogrammetric methods. Aerial photographs taken 1952. Field check 1953-1954

Polyconic projection. 1927 North American datum  
10,000-foot grid based on Kentucky coordinate system,  
north zone  
1000 meter Universal Transverse Mercator grid ticks,  
zone 16, shown in blue

The difference between 1927 North American Datum and North  
American Datum of 1983 (NAD 83) for 7.5-minute intersections  
is given in USGS Bulletin 1875. The NAD 83 is shown by  
dashed corner ticks

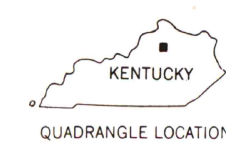
Map photoinspected 1984

No major culture or drainage changes observed



CONTOUR INTERVAL 10 FEET  
NATIONAL GEODETIC VERTICAL DATUM OF 1929

THIS MAP COMPLIES WITH NATIONAL MAP ACCURACY STANDARDS  
FOR SALE BY U. S. GEOLOGICAL SURVEY, DENVER, COLORADO 80225, OR RESTON, VIRGINIA 22092  
KENTUCKY GEOLOGICAL SURVEY, LEXINGTON, KENTUCKY 40506  
AND KENTUCKY DEPARTMENT OF COMMERCE, FRANKFORT, KENTUCKY 40601  
A FOLDER DESCRIBING TOPOGRAPHIC MAPS AND SYMBOLS IS AVAILABLE ON REQUEST



QUADRANGLE LOCATION

ROAD CLASSIFICATION	
Heavy-duty	4 LANE 16 LANE
Medium-duty	4 LANE 16 LANE
U. S. Route	State Route
Interstate Route	

MIDWAY, KY.

38084-86-TF-024  
PHOTOINSPECTED 1984  
1954  
PHOTOREVISED 1978  
DMA 4060 II NW-SERIES V853

Revisions shown in purple compiled from aerial photographs  
taken 1976 and other source data. Corners adjusted adjacent  
to certain photorevised hydrographic features. This information  
not field checked. Map edited 1978

U.S. Regional  
Depository Copy  
DO NOT DISCARD

A.H. ROBINSON  
MAP LIBRARY  
DEC 26 1991  
University of Wisconsin  
Madison