

4060 IIVE  
(S 17125)

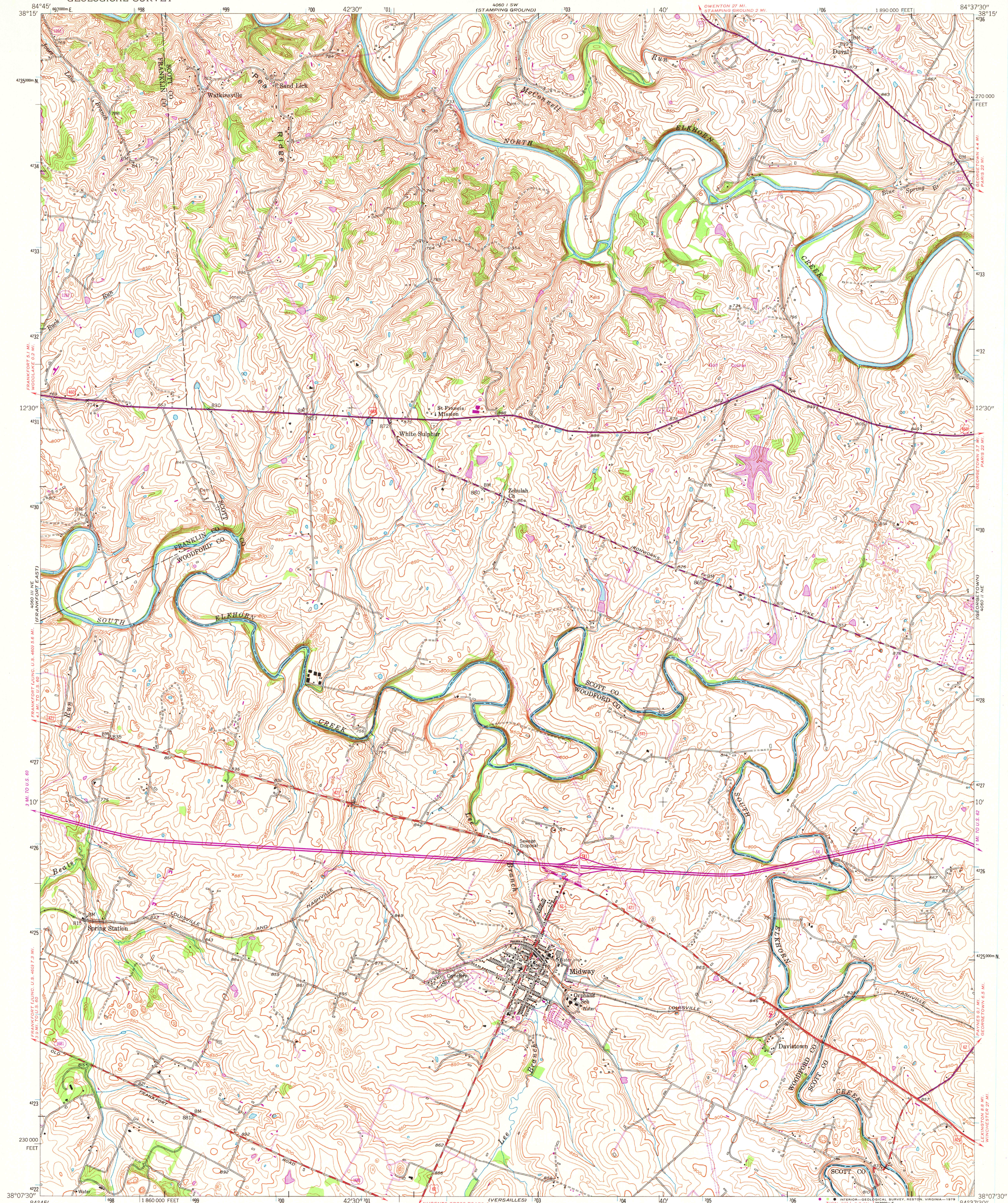
UNITED STATES  
DEPARTMENT OF THE INTERIOR  
GEOLOGICAL SURVEY



STATE OF KENTUCKY  
AGRICULTURAL AND INDUSTRIAL DEVELOPMENT BOARD

MIDWAY QUADRANGLE  
KENTUCKY  
7.5 MINUTE SERIES (TOPOGRAPHIC)

4060 SE  
(DEL 421 AM)

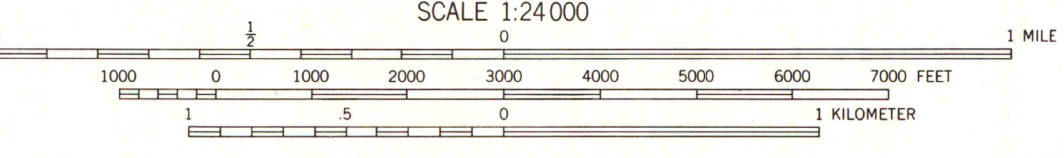
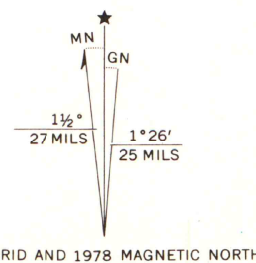


Mapped, edited, and published by the Geological Survey  
Control by USGS and USC&GS

Topography from aerial photographs by stereophotogrammetric  
methods. Aerial photographs taken 1952. Field check 1953-1954

Polycyclic projection. 1927 North American datum  
10,000-foot grid based on Kentucky coordinate system,  
north zone  
1000-meter Universal Transverse Mercator grid ticks,  
zone 16, shown in blue

Revisions shown in purple compiled from aerial  
photographs taken 1976 and other source data.  
Contours adjusted adjacent to certain photo-  
revised hydrographic features. This information  
not field checked. Map edited 1978



CONTOUR INTERVAL 10 FEET  
NATIONAL GEODETIC VERTICAL DATUM OF 1929

THIS MAP COMPLIES WITH NATIONAL MAP ACCURACY STANDARDS  
FOR SALE BY U.S. GEOLOGICAL SURVEY, RESTON, VIRGINIA 22092  
KENTUCKY GEOLOGICAL SURVEY, LEXINGTON, KENTUCKY 40506  
AND KENTUCKY DEPARTMENT OF COMMERCE, FRANKFORT, KENTUCKY 40601  
A FOLDER DESCRIBING TOPOGRAPHIC MAPS AND SYMBOLS IS AVAILABLE ON REQUEST

ROAD CLASSIFICATION			
Heavy-duty	4 LANE 6 LANE	Light-duty	2 LANE 4 LANE
Medium-duty	4 LANE 6 LANE	Unimproved dirt	-----
U. S. Route		State Route	
Interstate Route		State Route	



MAY 24 1979

MIDWAY, KY.

N3807.5-W8437.5/7.5

1954

PHOTOREVISED 1978

AMS 4060 II NW-SERIES V853

University of Wisconsin  
Madison