

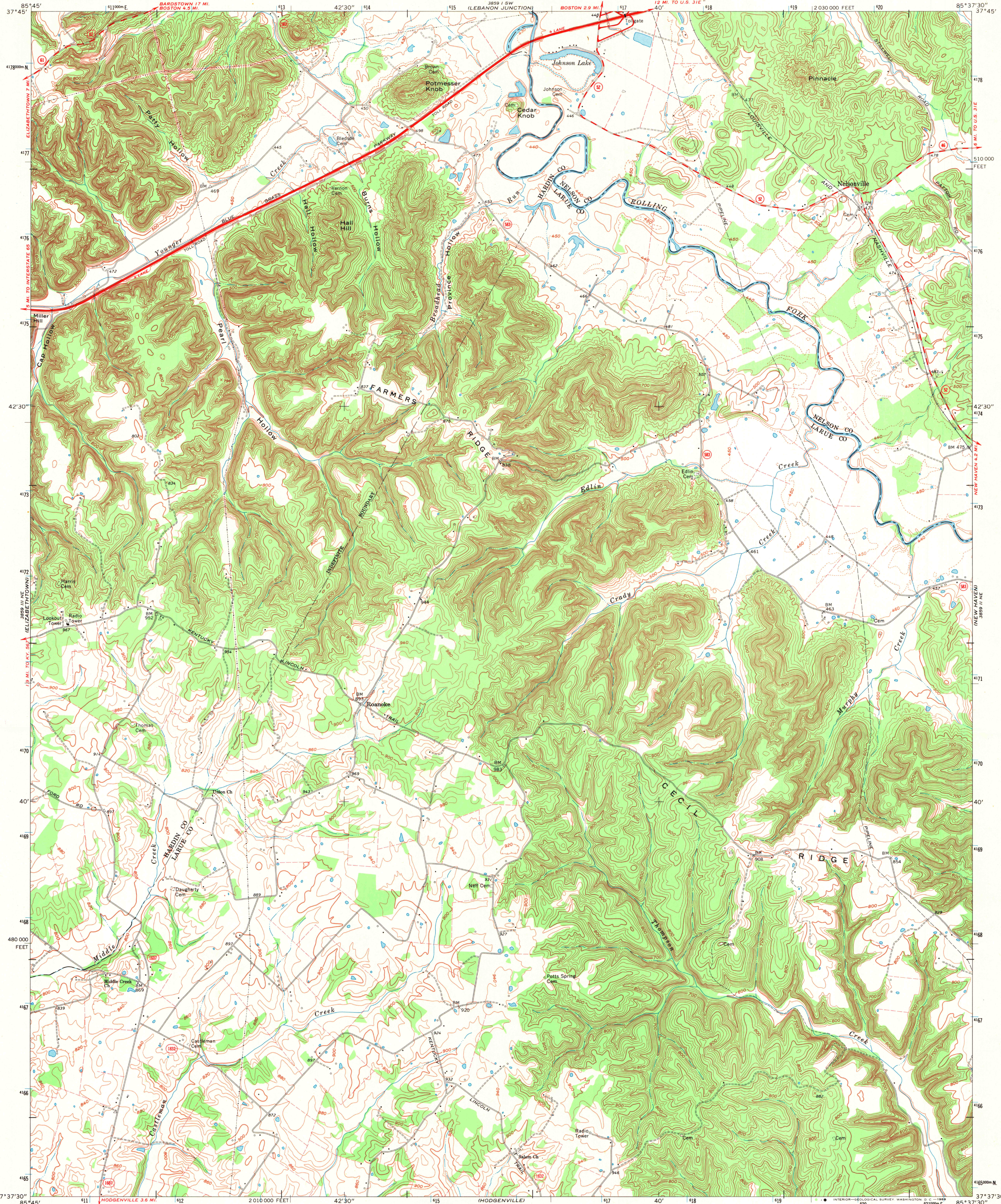
3859 II SE
COLESDALE

UNITED STATES
DEPARTMENT OF THE INTERIOR
GEOLOGICAL SURVEY

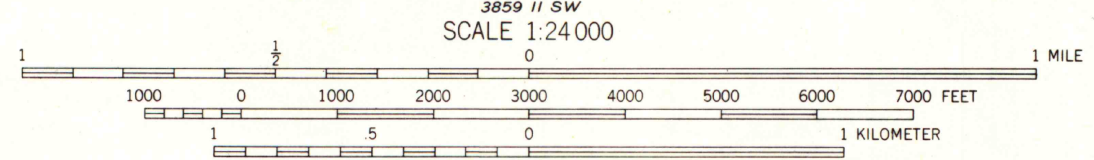
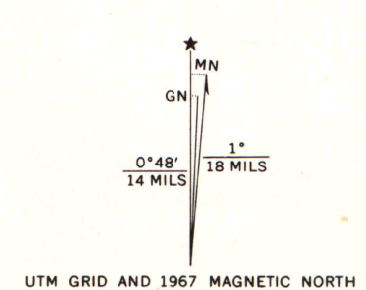
STATE OF KENTUCKY
KENTUCKY GEOLOGICAL SURVEY
UNIVERSITY OF KENTUCKY

NELSONVILLE QUADRANGLE
KENTUCKY
7.5 MINUTE SERIES (TOPOGRAPHIC)
NW/4 HODGENVILLE 15' QUADRANGLE

3859 II SE
HOWARDSTOWN



Mapped, edited, and published by the Geological Survey
Control by USGS and USC&GS
Topography by photogrammetric methods from aerial photographs
taken 1951. Field checked 1953. Revised from aerial photographs
taken 1967. Field checked 1967
Polyconic projection. 1927 North American datum
10,000-foot grid based on Kentucky coordinate system, south zone
1000-meter Universal Transverse Mercator grid ticks,
zone 16, shown in blue
Fine red dashed lines indicate selected fence and field lines where
generally visible on aerial photographs. This information is unchecked



CONTOUR INTERVAL 20 FEET
DOTTED LINES REPRESENT 10-FOOT CONTOURS
DATUM IS MEAN SEA LEVEL

THIS MAP COMPLIES WITH NATIONAL MAP ACCURACY STANDARDS
FOR SALE BY U. S. GEOLOGICAL SURVEY, WASHINGTON, D. C. 20242,
KENTUCKY GEOLOGICAL SURVEY, LEXINGTON, KENTUCKY 40506,
AND KENTUCKY DEPARTMENT OF COMMERCE, FRANKFORT, KENTUCKY 40601
A FOLDER DESCRIBING TOPOGRAPHIC MAPS AND SYMBOLS IS AVAILABLE ON REQUEST



MAP AND AIR PHOTO LIBRARY

SEP 17 1969

University of Wisconsin

ROAD CLASSIFICATION

Primary highway, all weather, hard surface	Light-duty road, all weather, improved surface
Secondary highway, all weather, hard surface	Unimproved road, fair or dry weather
U. S. Route	State Route

NELSONVILLE, KY.
NW/4 HODGENVILLE 15' QUADRANGLE
N3737.5-W8537.5/7.5

1967

AMS 3859 II NW-SERIES V853