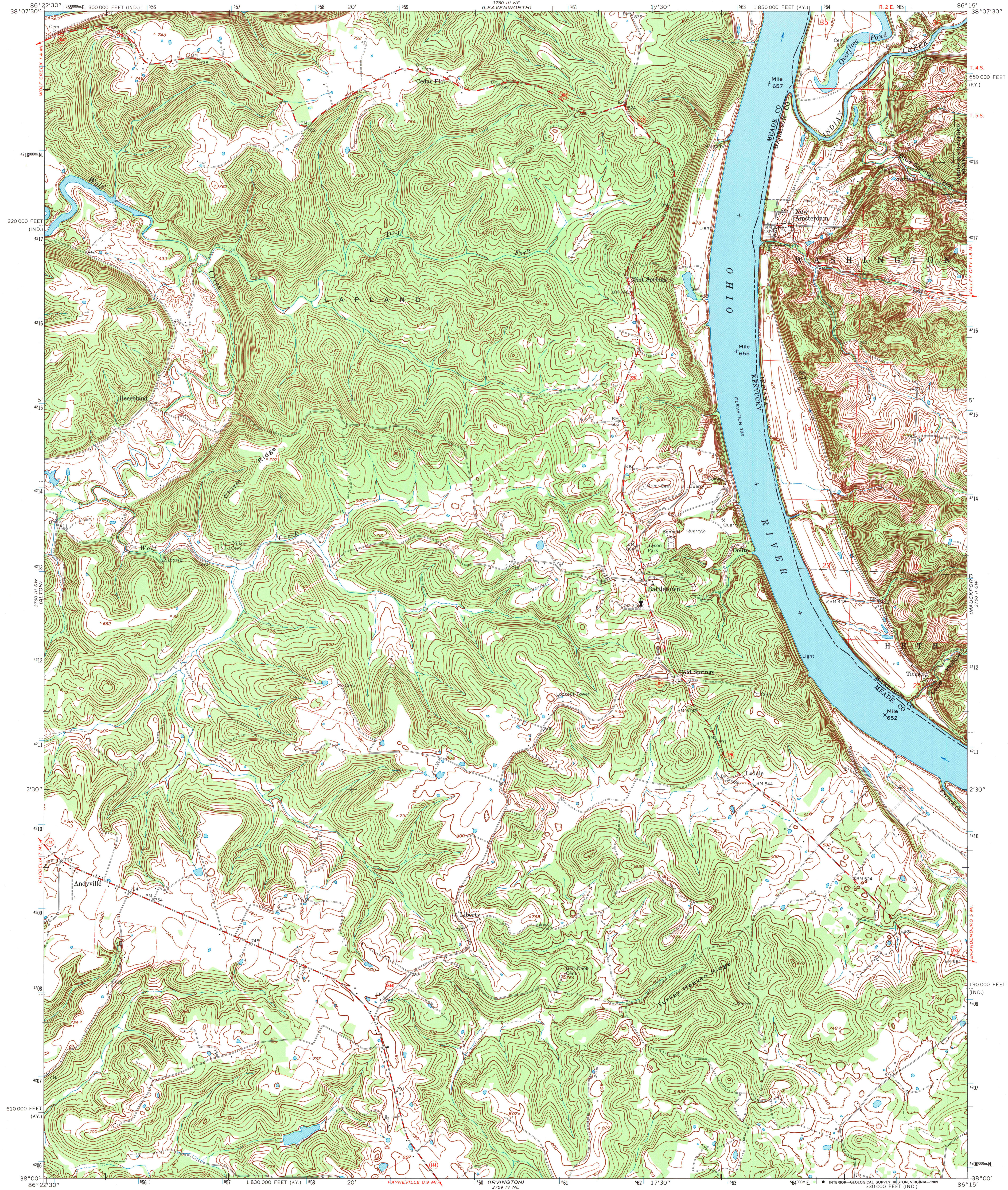


UNITED STATES  
DEPARTMENT OF THE INTERIOR  
GEOLOGICAL SURVEY

NEW AMSTERDAM QUADRANGLE  
KENTUCKY-INDIANA  
7.5 MINUTE SERIES (TOPOGRAPHIC)  
SE 1/4 ALTON 15' QUADRANGLE  
R 2 E 65 E



Mapped by the Geological Survey and the Army Map Service  
Edited and published by the Geological Survey in cooperation  
with Indiana Department of Natural Resources  
Revised in cooperation with Indiana Department of Natural Resources  
Control by USGS, USC&GS, and USCE  
Topography in Kentucky by photogrammetric methods from aerial photographs  
taken 1947. Field checked 1950. Topography in Indiana by planimetric  
surveys 1945. Revised from aerial photographs taken 1969.  
Field checked 1970.  
Polyconic projection. 1927 North American datum  
10,000-foot grids based on Kentucky coordinate system, south zone,  
and Indiana coordinate system, east zone  
100-meter Universal Transverse Mercator grid ticks, zone 16, shown in blue  
Fine red dashed lines indicate selected fence and field lines where  
generally visible on aerial photographs. This information is unchecked  
The state boundary as shown represents the approximate position of the  
Ohio River charts, surveyed 1912, and supplementary information

SCALE 1:24,000

1 MILE  
0 1000 2000 3000 4000 5000 6000 7000 FEET  
0 1 2 3 4 5 6 7 8 9 10 KILOMETER

CONTOUR INTERVAL IN KENTUCKY 20 FEET  
DASHED LINES REPRESENT 10-FOOT CONTOURS  
CONTOUR INTERVAL IN INDIANA 10 FEET  
NATIONAL GEODETIC VERTICAL DATUM OF 1929

FOR SALE BY U. S. GEOLOGICAL SURVEY, DENVER, COLORADO 80225, OR RESTON, VIRGINIA 22082  
KENTUCKY GEOLOGICAL SURVEY, LEXINGTON, KENTUCKY 40506  
KENTUCKY DEPARTMENT OF COMMERCE, FRANKFORT, KENTUCKY 40601,  
AND INDIANA DEPARTMENT OF NATURAL RESOURCES, INDIANAPOLIS, INDIANA 46204  
A FOLDER DESCRIBING TOPOGRAPHIC MAPS AND SYMBOLS IS AVAILABLE ON REQUEST

ARTHUR H. ROBINSON MAP LIBRARY  
University of Wisconsin-Madison

JUN 11 1989

ROAD CLASSIFICATION

Primary highway, hard surface	Light-duty road, hard or improved surface
Secondary highway, hard surface	Unimproved road
Interstate Route	U. S. Route
	State Route

NEW AMSTERDAM, KY.—IND.  
38086-A3-TF-024  
1970  
PHOTOINSPECTED 1978  
DMA 3760 III SE—SERIES V853

To place on the predicted North American Datum 1983,  
move the projection lines 3 meters south and  
1 meter west as shown by dashed corner ticks  
Map photoinspected 1978  
No major culture or drainage changes observed

U.S. Regional  
Depository Copy  
DO NOT DISCARD